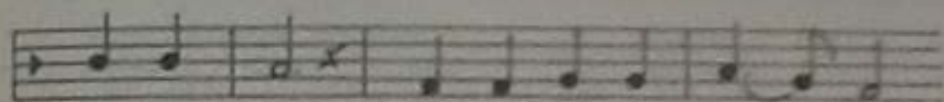
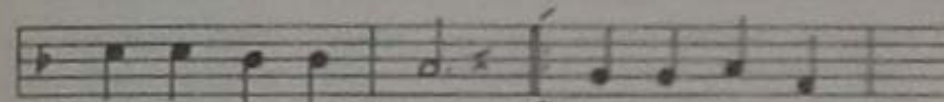


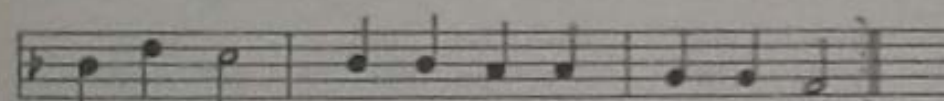
1. Ma-ry, dear-est Moth-er! From thy
 2. Moth-er of our Sa-ving, Joy of
 3. Ho-ly Queen of An-gels! Bid these



heavenly height, Look on us thy chil-dren,
 God a-bove! Je-sus bade thee keep us
 an-gels come To es-cort us safe-ly



Lost in earth's dark night; Save us, Moth-er,
 In His fear and love. Keep us, Moth-er,
 To our heav-en-ly home. Bid them aid us



'mid our fears, In this vale of sighs and tears.
 keep us e'er, Shield us 'neath thy lov-ing care.
 in the strife Till we reach e-ter-nal life.

4. O we love thee, Mary!
 Trusting all to thee,
 What is past or present,
 What is yet to be.
 Guide us from thy blissful height
 Out from darkness into light.

5. Sweeter still and sweeter
 Doest thou grow to us,
 Will it, dearest Mother,
 Evermore be thus?
 Mother, may it always be
 Now and in eternity.

