

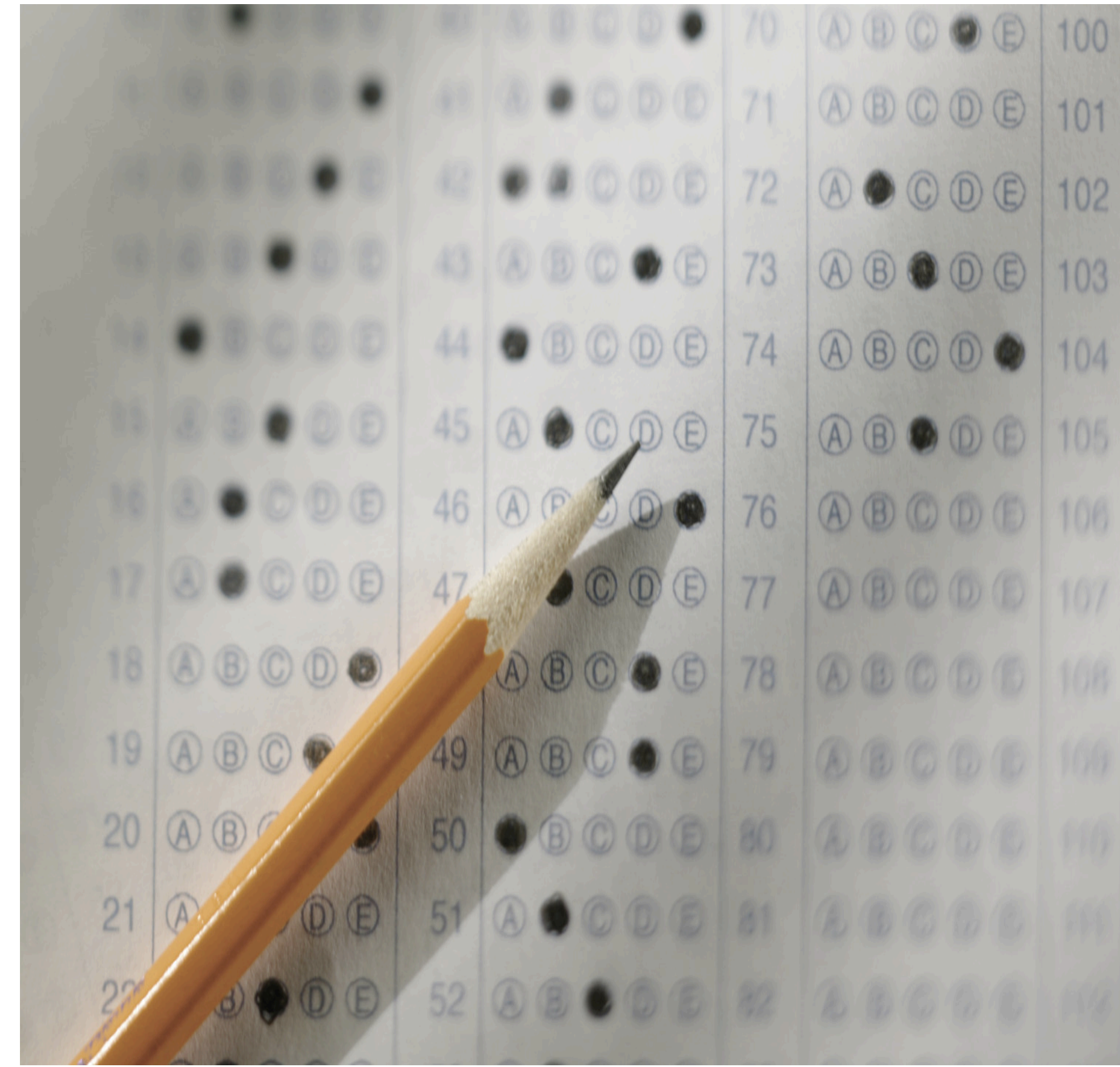
# Research on the Foundational Elements of the Education System

Kaitlyn Stanfield and Emma Francois

Advised by Dr. Kathryn A. Kinnucan-Welsch, EdD. & Mrs. Susan M. Ferguson, M.S.

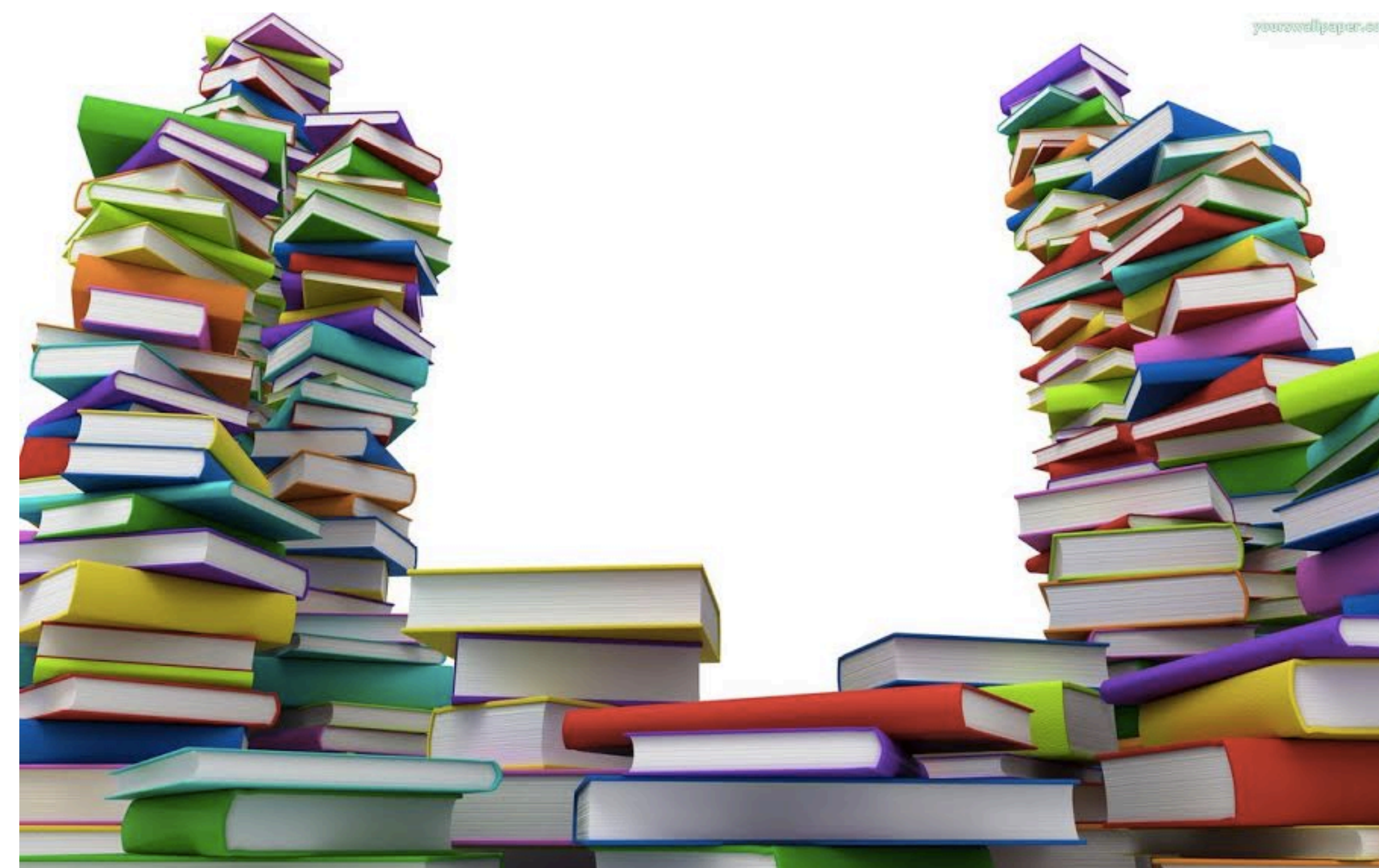
## Pros of Standardized Tests

- They can be used to measure social inequality.
- They are less problematic than other alternatives for evaluating teachers and determining college acceptance.
- They help drive national school improvement and guide standards for teaching.



## Cons of Standardized Tests

- They are not necessarily good predictors of future success.
- They are not an accurate representation of students' knowledge and teachers should not be held accountable for students' test-taking ability.
- They have too many high-stakes consequences.



## Positive Effects of Homework

- Responsibility
- Time management
- Increased student achievement
- Study skills

## Negative Effects of Homework

- Increased stress
- Sleep deprivation/health problems
- Less time for friends/family/extra-curricular activities
- Too much can diminish student achievement

## Optimum Amount of Homework per Grade

- K-2<sup>nd</sup>: 10 to 20 minutes
- 3<sup>rd</sup>-6<sup>th</sup>: 30 to 60 minutes
- Jr. High: 90 minutes
- High School: 90 minutes to 2 ½ hours