

VI College of Arts and Sciences

DR. LEONARD A. MANN, S.M., *Dean*
MR. RICHARD PETERSON, *Assistant Dean*
MISS ANN FRANKLIN, *Assistant Dean*

Consistent with the goals of the University, the College of Arts and Sciences not only strives to prepare the student for the practical task of making a respectable living, but recognizes that there are other benefits that should come to him. Among these are habits of clear thinking and critical reasoning, a recognition of the role of each person in his society and his responsibility for his fellow man, and an appreciation of the aesthetic and cultural values in life, and a desire for continuing growth in the pursuit of truth.

Ideally, the student is best served when he is equipped with knowledge deep enough to pursue graduate studies in a given discipline, understands and loves his fellow man, and confronts issues and questions that arise in every walk of life with a careful analysis based on unchanging principles that ultimately lead him to his final destiny. The educated man never stops developing his powers, and has a beneficial impact on all those with whom he comes in contact. The development of such a person is the goal of the College of Arts and Sciences.

To achieve these ends, the disciplines of Theology and Philosophy are included in every program, since they are most directly concerned with ultimates and basic principles. In addition to these, foreign language, the humanities, and the social and physical sciences complete the requirements that provide the base for this formation.

The non-academic aspects of the student's development are served best through the many organizations open to all students, such as the social and professional clubs and societies, the performing arts, student government, the campus publications, participation in the guest artist and lecture series, and the spiritual retreats and the campus religious activities.

DEGREE REQUIREMENTS

For the Bachelor of Arts or Bachelor of Science degree, it is necessary to complete all of the courses listed in one of the programs on the following pages. This will constitute a major field and usually a minor field. The total number of credit hours will vary from one program to another; the required number can be determined from the program in which the student is enrolled.

In most of the programs some courses are listed as electives. These courses are electives, not in the sense that they may be taken or not taken, but in that the

student may elect any course that is offered for which he has prerequisites. They constitute an important part of his program, and permit some latitude in achieving the goals he has set for himself. It is always advisable to select these courses in consultation with the faculty adviser.

The major field normally constitutes twenty-four hours of upper level courses, and the minor field, twelve. Under unusual circumstances, it is possible to modify this requirement by the substitution of courses from other departments if they serve the specific interests of the student in his pursuit of his major field. This can be done only with the permission of the chairman; however, it is not permitted to take less than eighteen hours in a major field under any circumstances.

POSSIBLE MAJORS

For the Bachelor of Arts degree the possible majors are: communication arts, economics, English, fine arts, geology, history, languages, mathematics, music, philosophy, political science, psychology, sociology, anthropology, or social work, and theological studies.

For the Bachelor of Science degree the possible majors are: biology, chemistry, computer science, geology, mathematics, home economics (the general program or the dietetics program), medical technology, physics, psychology, and social work.

Other programs lead to the Bachelor of Social Science with specialization in Police Administration, the Bachelor of Fine Arts, and the Bachelor of Music degrees.

ACADEMIC STANDING

As a requirement for graduation, it is necessary that the grade point average be at least 2.00 in the major field, in the minor field, and in the total program. In the B.F.A. and B. Music programs a 2.0 cumulative average is required in the non-professional courses, as well as in the professional courses.

PRE-PROFESSIONAL COURSES

The schedule should be drawn up with a view to preparation for a particular profession which the student may have in mind. Hence it is imperative that the student consult the dean to receive the proper educational guidance.

Students interested in librarianship or archival work will need a strong major and minor, a reading knowledge of German and French, and an interest in a variety of subjects. Technically, a law school will accept any college degree with the proper cumulative point average.

For public administration and civil service, a major in a social science is desirable. This is equally true for foreign service, and here a strong aptitude in modern language is also a strong aid.

Although vocational education is not the primary objective of the Arts, they are practical because the best "job-insurance" is not a narrow training in specific skills but a broad training in general capabilities. Graduates with the B.A., for example, are now accepted in graduate schools in M.B.A. programs.

Two years of college study are required for admission to the first year of philosophy in diocesan seminaries. During these years stress should be placed upon English, the classical and modern languages.

Students contemplating the medical profession should consult the pre-medical program (Program—S11: pp. 94-95) adviser. Those interested in pharmacy, dentistry and similar programs also consult the pre-medical adviser.

TEACHER EDUCATION PROGRAM

Students planning to teach in secondary schools may elect a program of studies with a major in any academic discipline within the College of Arts and Sciences, and include sufficient courses from the School of Education, including student teaching, to qualify them for certification. For details of this program, see the School of Education section of this Bulletin. This would yield the B.A. or the B.S. degree in the discipline, in addition to the teaching certificate.



GENERAL REQUIREMENTS FOR BACHELOR OF ARTS DEGREES

<i>Dept.</i>	<i>No.</i>	<i>Course</i>	<i>1st¹ Term</i>	<i>2nd Term</i>	<i>3rd Term</i>
<i>Freshman Year</i>					
ORI	100	Arts and Sciences Orientation	1-0-0		
ENG	101-6	Freshman English	3-0-3	3-0-3	
HST ²	—	History electives	3-0-3	3-0-3	
EDP ³	130-1	Physical Education	1-2-1	1-2-1	
PHL	106	Basic Problems in Philosophy	3-0-3		
SPE ⁴	101	Fundamentals of Effective Speaking			3-0-3
THL ⁵	112	Foundations in Theology		3-0-3	
— ⁶	—	Foreign Language course	3-0-3	3-0-3	
—	—	Science course	3-3-4	3-3-4	
			17	17	
<i>Sophomore Year</i>					
ENG	—	Sophomore English	3-0-3	3-0-3	
HST ²	—	American History electives	3-0-3	3-0-3	
EDP ³	140	Personal and Community Health	2-0-2		
PHL	206	Basic Problems in Philosophy II	3-0-3		
PSY	201	Introduction to Psychology	3-0-3		
Soc ⁷	204	Modern Social Problems		3-0-3	
THL ⁵	—	Theology elective		3-0-3	
—	—	Foreign Language course	3-0-3	3-0-3	
			17	16	

Junior and Senior Years

See specific programs on the following pages.

¹Under "Term," 3-0-3 means 3 hrs. class, 0 hrs. laboratory, and 3 hrs. credit.²Freshmen elect 6 hours from Hst 101-102, 120, 125, 130, 135. Sophomores elect 6 hours from Hst 251, 252, 260, 265, 270, 275.³Women take EdP 130-1; EdP 140—Women only.⁴This course is fitted into the different programs at different times.⁵Non-Catholic students take an elective, or Spe 101.⁶Freshmen who continue a language studied in high school for 2 or more years must have taken CEEB Achievement and Supplementary Achievement Tests in that language in order to qualify for exemption from further language study. Exempted freshmen may take 307 as elective. Freshmen not exempted will be placed at the proper level. Freshmen who begin a new language take 101. Transfer students consult department chairman.⁷Some programs do not require Sociology.

**PROGRAM—A1: BACHELOR OF ARTS WITH AN
INTERDISCIPLINARY MAJOR IN AMERICAN
STUDIES**

<i>Dept.</i>	<i>No.</i>	<i>Course</i>	<i>1st¹ Term</i>	<i>2nd Term</i>	<i>3rd Term</i>
<i>Freshman Year</i>					
ENG	101-6	Freshman English	3-0-3	3-0-3	
HST ²	—	History Electives	3-0-3	3-0-3	
EDP ³	130-1	Physical Education	0-2-1	0-2-1	
PHL	106	Basic Problems in Philosophy I	3-0-3		
THL ⁴	112	Foundations in Theology		3-0-3	
— ⁵	—	Foreign Language Course	3-0-3	3-0-3	
—	—	Science Course	3-3-4	3-3-4	
ORI	100	Arts and Sciences Orientation	1-0-0		
			<u>17</u>	<u>17</u>	
<i>Sophomore Year</i>					
ENG	204	Sophomore English	3-0-3	3-0-3	
HST ²	—	American History Electives	3-0-3	3-0-3	
EDP ³	140	Personal and Community Health		2-0-2	
PHL	206	Basic Problems in Philosophy II	3-0-3		
SPE	101	Fundamentals of Effective Speaking		3-0-3	
— ⁶	—	Social Studies Prerequisite Elective	3-0-3	3-0-3	
— ⁵	—	Foreign Language Course	3-0-3	3-0-3	
			<u>15</u>	<u>17</u>	
<i>Junior Year</i>					
AMS	300-1	American Studies Sequence	3-0-3	3-0-3	
— ⁷	—	First Area Electives	6-0-6	6-0-6	
— ⁸	—	Second Area Electives	3-0-3		
— ⁸	—	Third Area Electives		3-0-3	
PHL	—	Philosophy Electives		3-0-3	
THL	—	Theology Electives	3-0-3	3-0-3	
			<u>15</u>	<u>18</u>	

PROGRAM—A1—Continued

<i>Dept.</i>	<i>No.</i>	<i>Courses</i>	<i>1st Term</i> ¹	<i>2nd Term</i>	<i>3rd Term</i>
<i>Senior Year</i>					
AMS	400	American Studies Sequence	3-0-3		
—7	—	First Area Electives	6-0-6	6-0-6	
—8	—	Second Area Electives	3-0-3	3-0-3	
—8	—	Third Area Electives	3-0-3		
PHL	—	Philosophy Electives		3-0-3	
THL	—	Theology Electives		3-0-3	
			15	15	

¹Under "Term" 3-0-3 means 3 hours class, 0 hours laboratory, and 3 hours credit.

²Freshmen elect 6 hours from Hst 101-102, 120, 125, 130, 135.

Sophomores elect 6 hours from Hst 251, 252, 260, 265, 270, 275.

³Women only.

⁴Non-Catholics may take an elective or Spe 101.

⁵Students who qualify for intermediate level language may complete the requirements with six credits. See General Requirements for B.A. degree.

⁶Students choose six or more hours of prerequisite courses in Departments in which they plan to take upper-level courses. Departmental prerequisites are as follows: Eco 201-2, Pol 201, Psy 201, Soc 205.

⁷These courses are chosen from Group A, B, or C as listed under American Studies courses of instruction, p. 199. Nine term hours must be in non-American courses chosen in consultation with the American Studies Chairman.

⁸These courses are chosen from one of the two remaining Groups A, B, or C as listed under American Studies courses of instruction, p. 199.



**PROGRAM—A2: BACHELOR OF ARTS WITH A MAJOR IN
CHEMISTRY**

<i>Dept.</i>	<i>No.</i>	<i>Course</i>	<i>1st¹ Term</i>	<i>2nd Term</i>	<i>3rd Term</i>
<i>Freshman Year</i>					
ENG	101-6	Freshman English	3-0-3	3-0-3	
CHM ²	123-4	General Chemistry	3-3-4	3-3-4	
MTH ³	112-3	Intro. Math. Anal.	3-0-3	3-0-3	
PHL	106	Problems in Phil. I		3-0-3	
THL	152	Introduction Sac. Script.	3-0-3		
—	—	Electives	3-0-3	3-0-3	
ORI	100	Arts & Sciences Orientation	1-0-0		
			<u>16</u>	<u>16</u>	
<i>Sophomore Year</i>					
CHM ²	201	Quantitative Analysis	2-4-4		
MTH ³	215	Basic Statistics		3-0-3	
PHYS ²	201-2	General Physics	3-3-4	3-3-4	
— ⁹	—	Foreign Language	3-0-3	3-0-3	
THL	220	Theology of Christ	3-0-3		
PHL	206	Problems in Phil. II		3-0-3	
—	—	Electives		3-0-3	
			<u>14</u>	<u>16</u>	
<i>Junior Year</i>					
CHM ⁴	313-4	Organic Chemistry	3-3-4	3-3-4	
THL	—	Theology Elective	3-0-3		
— ⁵	—	Science Electives	3-0-3	3-0-3	
— ⁶	—	General Electives	6-0-6	9-0-9	
			<u>16</u>	<u>16</u>	

PROGRAM—A2—Continued

<i>Dept.</i>	<i>No.</i>	<i>Course</i>	<i>1st Term</i>	<i>2nd Term</i>	<i>3rd Term</i>
<i>Senior Year</i>					
CHM ⁷	302	Physical Chemistry	3-0-3		
CHM	308	Chemical Literature		2-0-2	
THL	—	Theology Elective	3-0-3		
— ⁸	—	Science Electives	3-0-3	3-0-3	
— ⁶	—	General Electives	6-0-6	12-0-12	
			15	17	

¹Under "Term" 3-0-3 means 3 hours class, 0 hours laboratory, and 3 hours credit.

²May substitute more advanced course depending on background, placement test, or permission of department head.

³May substitute Mth 128-9 for Mth 112, 113 and 215.

⁴May substitute Chm 315-6.

⁵Must include two of the following courses: Chm 405, 412, 415, 420, 417, 404.

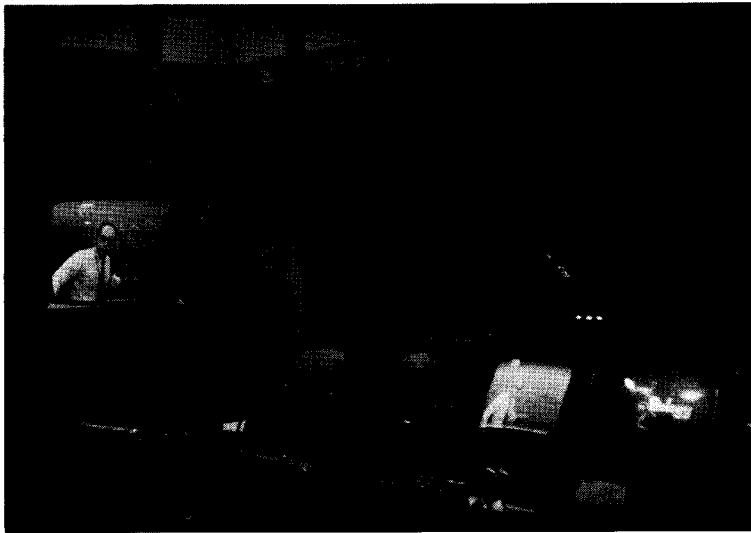
⁶General Electives must include 3 credits in Speech 101, (unless previously taken), and 6 credits in Philosophy. Remainder may not be in physical sciences or math.

⁷May substitute Chm 303-4

⁸Must include either two more of the above in footnote 6, or two of the following courses: Bio 313, 310, 312, 325, 340, 407, 411, certain computer science, Geology etc.

⁹See footnote 6, p. 66.





**PROGRAM—A3: BACHELOR OF ARTS WITH A MAJOR IN
COMMUNICATION ARTS**

<i>Dept.</i>	<i>No.</i>	<i>Course</i>	<i>1st' Term</i>	<i>2nd Term</i>	<i>3rd Term</i>
<i>Freshman Year</i>					
ORI	100	Arts and Sciences Orientation	1-0-0		
ENG	101-6	Freshman English	3-0-3	3-0-3	
HST ²	—	History electives	3-0-3	3-0-3	
MIL ³	101-2	First Year Basic Course	2-1-1	2-1-1	
PHL	106	Basic Problems in Philosophy I	3-0-3		
PHL	206	Basic Problems in Philosophy II			3-0-3
SPE	101	Fundamentals of Effective Speaking			3-0-3
THL ⁴	112	Foundations in Theology		3-0-3	
— ⁶	—	Modern Language Course	3-0-3	3-0-3	
—	—	Science Course	3-3-4	3-3-4	
			17	17	6
<i>Sophomore Year</i>					
ENG	—	Sophomore English electives	3-0-3	3-0-3	
HST ²	—	American History electives	3-0-3	3-0-3	
EdP ⁵	140	Personal and Community Health	2-0-2		
PSY	201	Introductory Psychology	3-0-3		
SOC	204	Modern Social Prob.	3-0-3		
THL ⁴	—	Theology elective		3-0-3	
—	—	Appropriate course		3-0-3	
— ⁶	—	Modern Language course	3-0-3	3-0-3	
			17	16	

PROGRAM—A3—Continued

<i>Dept.</i>	<i>No.</i>	<i>Course</i>	<i>1st¹ Term</i>	<i>2nd Term</i>	<i>3rd Term</i>
<i>Junior Year</i>					
PHL	—	Philosophy elective	3-0-3		
PHL	—	Philosophy elective		3-0-3	
THL ⁴	—	Theology Elective	3-0-3		
—	—	General elective		3-0-3	
—	—	Major	6-0-6	6-0-6	
—	—	Minor	3-0-3	3-0-3	
			15	15	
<i>Senior Year</i>					
—	—	Elective		3-0-3	
—	—	Elective	3-0-3		
SPE	430	Seminar in Communication Arts		3-0-3	
THL ⁴	—	Theology elective	3-0-3		
—	—	Major	6-0-6	6-0-6	
—	—	Minor	3-0-3	3-0-3	
			15	15	

¹Under "Term" 3-0-3 means 3 hours class, 0 hours laboratory, and 3 hours credit.

²See footnote 2, p. 61.

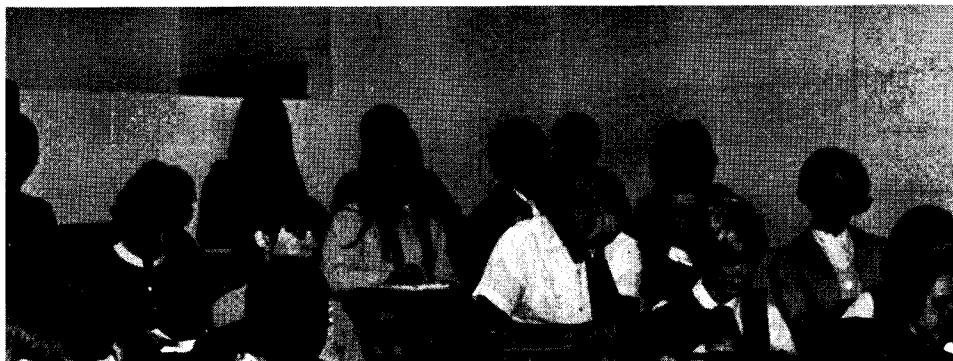
³Women take EdP 130-131; men not taking R.O.T.C. take EdP 101, 102.

⁴Non-Catholic students may take an elective.

⁵Women only.

⁶See footnote 6 on page 66.





**PROGRAM—A4: BACHELOR OF ARTS WITH A MAJOR IN
ECONOMICS**

<i>Dept.</i>	<i>No.</i>	<i>Course</i>	<i>1st¹ Term</i>	<i>2nd Term</i>	<i>3rd Term</i>
<i>Freshman Year</i>					
ORI	100	Arts and Sciences Orientation	1-0-1		
ENG	101-6	Freshman English	3-0-3	3-0-3	
HST ²	—	History electives	3-0-3	3-0-3	
PHL	106	Basic Problems in Philosophy I	3-0-3		
THL ⁴	112	Foundations in Theology		3-0-3	
— ⁶	—	Modern Language course	3-0-3	3-0-3	
—	—	Science course	3-2-4	3-2-4	
			<u>17</u>	<u>17</u>	
<i>Sophomore Year</i>					
ECO	201-2	Principles of Economics	3-0-3	3-0-3	
ENG	—	Sophomore English	3-0-3	3-0-3	
HST ²	—	American History electives	3-0-3	3-0-3	
EDP ⁵	140	Personal and Community Health	2-0-2		
PHL	206	Basic Problems in Philosophy II	3-0-3		
THL ⁴	112	Theology elective		3-0-3	
— ⁶	—	Modern Language course	3-0-3	3-0-3	
			<u>17</u>	<u>16</u>	

PROGRAM—A4—Continued

<i>Dept.</i>	<i>No.</i>	<i>Courses</i>	<i>1st Term¹</i>	<i>2nd Term</i>	<i>3rd Term</i>
<i>Junior Year</i>					
MTH	101	Pre-Calculus Mathematics	4-0-4		
Eco	340	Micro Economic Analysis	3-0-3		
Eco	341	Macro Economic Analysis		3-0-3	
Eco	342	Money, Banking, and Monetary Policy		3-0-3	
PHL	—	Philosophy elective	3-0-3		
PSY	201	Introductory Psychology		3-0-3	
THL ³	—	Theology elective		3-0-3	
—	—	Economics elective	3-0-3		
—	—	Minor		3-0-3	
SPE	101	Fundamentals of Effective Speaking	3-0-3		
			16	15	
<i>Senior Year</i>					
PHL	—	Philosophy elective		3-0-3	
THL ³	—	Theology elective	3-0-3		
—	—	Economics elective	6-0-6	6-0-6	
—	—	General elective		3-0-3	
—	—	Minor	6-0-6	3-0-3	
			15	15	

¹Under "Term" 3-0-3 means 3 hours class, 0 hours laboratory, and 3 hours credit.

²See footnote 2, p. 61.

³Non-Catholic students may take an elective.



**PROGRAM—A5: BACHELOR OF ARTS WITH A MAJOR IN
ENGLISH**

<i>Dept.</i>	<i>No.</i>	<i>Course</i>	<i>1st¹ Term</i>	<i>2nd Term</i>	<i>3rd Term</i>
<i>Freshman Year</i>					
ORI	100	Arts and Sciences Orientation	1-0-0		
ENG ²	100	Freshman English	3-0-3	3-0-3	
HST ³	101-6	History electives	3-0-3	3-0-3	
EDP ⁴	130-1	Physical Education	1-1-1	1-1-1	
PHL	101-2	Basic Problems in Philosophy I	3-0-3	3-0-3	
THL ⁵	112	Foundations of Theology		3-0-3	
— ⁶	—	Modern Language course	3-0-3	3-0-3	
—	—	Science course	3-3-4	3-3-4	
			<u>17</u>	<u>17</u>	
<i>Sophomore Year</i>					
ENG ⁷	2—	Sophomore electives	3-0-3	3-0-3	
HST ³	—	American History electives	3-0-3	3-0-3	
EDP ⁸	140	Personal and Community Health	2-0-2		
PHL	206	Basic Problems in Philosophy II	3-0-3		
PSY	201	Introductory Psychology	3-0-3		
SPE	101	Fundamentals of Effective Speaking		3-0-3	
THL ⁵	—	Theology elective		3-0-3	
—	—	Modern Language elective	3-0-3	3-0-3	
			<u>17</u>	<u>15</u>	
<i>Junior Year</i>					
ENG ⁹	—	Author course	3-0-3		
ENG ¹⁰	—	Advanced course	3-0-3		
ENG ¹¹	—	Early period survey		3-0-3	
ENG ¹²	—	Later period survey		3-0-3	
SOC	204	Modern Social Problems	3-0-3		
PHL	—	Philosophy elective		3-0-3	
THL ⁵	—	Theology elective		3-0-3	
—	—	General elective	3-0-3	3-0-3	
—	—	Minor	3-0-3	3-0-3	
			<u>15</u>	<u>18</u>	

PROGRAM—A5—Continued

<i>Dept.</i>	<i>No.</i>	<i>Course</i>	<i>1st Term</i> ¹	<i>2nd Term</i>	<i>3rd Term</i>
<i>Senior Year</i>					
ENG ¹³	490	Seminar		3-0-3	
ENG ¹⁴	—	Advanced American Literature	3-0-3		
ENG	—	English elective		3-0-3	
ENG ¹⁵	—	Shakespeare	3-0-3		
PHL	—	Philosophy elective	3-0-3		
THL ⁵	—	Theology elective		3-0-3	
—	—	General elective	3-0-3	3-0-3	
—	—	Minor	3-0-3	3-0-3	
			15	15	

¹Under "Term" 3-0-3 means 3 hours class, 0 hours laboratory, and 3 hours credit.

²Freshmen who complete Eng 106H take a 200 level course in the second term, or other honors option.

³Freshmen elect 6 hrs. from Hst 101, 102, 120, 125, 130, 135. Sophomores elect 6 hrs. from Hst 251, 252, 260, 265, 270, 275.

⁴Women only.

⁵Non-Catholic students take an elective.

⁶French or German preferred. See also footnote 6 on page 66.

⁷Sophomores elect 6 hrs. from Eng 201, 202, 203, 204 and 205.

⁸Only women take EdP 140.

⁹Eng 405 or 431.

¹⁰Eng 316, 318, 428.

¹¹Eng 412, 413, 420, 434, 435.

¹²Eng 438, 441, 442.

¹³Except for Eng 490, the required courses English could be taken in any term of the junior and senior year.

¹⁴Eng 450, 452, 454, 456.

¹⁵Eng 362, 423, 424, 425.

**PROGRAM—A6: BACHELOR OF ARTS WITH A MAJOR IN
FINE ARTS**

<i>Dept.</i>	<i>No.</i>	<i>Course</i>	<i>1st¹ Term</i>	<i>2nd Term</i>	<i>3rd Term</i>
<i>Freshman Year</i>					
ORI	100	Arts and Sciences Orientation	1-0-0		
ART ²	101-2	Introductory Drawing	2-0-2	2-0-2	
ART	111-12	Principles of Design	2-0-2	2-0-2	
ENG	101-6	Freshman English	3-0-3	3-0-3	
PHL	106	Basic Problems in Philosophy I	3-0-3		
HST	101-2	History of Civilization	3-0-3	3-0-3	
MIL ³	101-2	First Year Basic Course	1-1-1	1-1-1	
THL ⁴	112	Foundations in Theology		3-0-3	
— ⁷	—	Foreign Language	3-0-3	3-0-3	
			<u>17</u>	<u>17</u>	
<i>Sophomore Year</i>					
ART	226-7	Introductory Painting	2-0-2	2-0-2	
ART	191	Lettering and Calligraphy	2-0-2		
ART	251	Graphics		2-0-2	
ART ⁵	—	Electives		2-0-2	
ENG	—	Sophomore English	3-0-3	3-0-3	
PHL	206	Basic Problems in Philosophy II	3-0-3		
THL ⁴	112	Theology elective		3-0-3	
HST	251-2	American History	3-0-3	3-0-3	
—	—	Foreign Language	3-0-3	3-0-3	
EdP ³	140	Personal and Community Health	2-0-2		
			<u>18</u>	<u>18</u>	
<i>Junior Year</i>					
ART ⁶	—	Electives	4-0-4	4-0-4	
PHL	—	Elective	3-0-3		
—	—	Minor		3-0-3	
SPE	101	Fundamentals of Effective Speaking	3-0-3		
—	—	Science Course	3-3-4	3-3-4	
ART	371	History of Ancient Art	3-0-3		
ART	372	Renaissance Art		3-0-3	
SOC	203	Sociology		3-0-3	
			<u>17</u>	<u>17</u>	

PROGRAM—A6—Continued

<i>Dept.</i>	<i>No.</i>	<i>Course</i>	<i>1st Term</i> ¹	<i>2nd Term</i>	<i>3rd Term</i>
<i>Senior Year</i>					
ART ⁶	—	Electives	4-0-4	2-0-2	
ART	471	Development of Modern Art	3-0-3		
ART	472	Art in the Twentieth Century		3-0-3	
—	—	Minor	3-0-3		
PHL	—	Elective		3-0-3	
THL ⁴	—	Theology elective	3-0-3	3-0-3	
PSY	201	Introductory Psychology		3-0-3	
—	—	Minor	3-0-3	3-0-3	
			16	17	

¹Under "Term" 3-0-3 means 3 hours class, 0 hours laboratory, and 3 hours credit.

²Portfolio required before registration for regular as well as transfer students. Portfolio is also a requirement for graduation.

³Women students take EdP 130-1; men taking R.O.T.C. take EdP 101-2—EdP 140—Women only.

⁴Non-Catholic students may take an elective.

⁵Choose from Art 231-2, Art 261, Art 263, Art 217-18, Art 317-18, Art 208-9, Art 321-2, Art 228-9, Art 355-6.

⁶Students are to select from upper level art courses; seniors may take Art 490.

⁷See footnote 6 on page 66.



PROGRAM—A7: BACHELOR OF FINE ARTS

<i>Dept.</i>	<i>No.</i>	<i>Course</i>	<i>1st' Term</i>	<i>2nd Term</i>	<i>3rd Term</i>
<i>Freshman Year</i>					
ORI	100	Arts and Sciences Orientation	1-0-0		
ART	101-2	Introductory Drawing	2-0-2	2-0-2	
ART	111-2	Principles of Design	2-0-2	2-0-2	
ART	191-2	Lettering and Calligraphy	2-0-2	2-0-2	
ART	226-7	Introductory Painting	2-0-2	2-0-2	
ENG	101-6	Freshman English	3-0-3	3-0-3	
MIL ²	101-2	First Year Basic Course	1-1-1	1-1-1	
PHL	106	Basic Problems in Philosophy I	3-0-3		
THL ³	112	Foundations in Theology		3-0-3	
HST	101-2	History of Civilization	3-0-3	3-0-3	
			18	18	
<i>Sophomore Year</i>					
ART	317	Intermediate Design	2-0-2		
ART	—	Elect either Art 217-18, Art 318 Art 321, or Art 228		2-0-2	
ART	208-9	Intermediate Drawing	2-0-2	2-0-2	
ART	231-2	Sculpture	2-0-2	2-0-2	
ART ⁴	C221-2	Ceramics	2-0-2	2-0-2	
ENG	—	Sophomore English	3-0-3	3-0-3	
HST ⁵	—	American History elective		3-0-3	
PHL	206	Basic Problems in Philosophy II	3-0-3		
THL ³	221	Theology of Christ		3-0-3	
SPE	101	Fundamentals of Effective Speaking	3-0-3		
EdP ⁶	140	Physical Education	2-0-2		
			17	17	

PROGRAM—A7—Continued

<i>Dept.</i>	<i>No.</i>	<i>Course</i>	<i>1st Term</i> ¹	<i>2nd Term</i>	<i>3rd Term</i>
<i>Junior Year</i>					
ART	371	History of Ancient Art	3-0-3		
ART	372	Renaissance Art		3-0-3	
ART	251-2	Graphics	2-0-2	2-0-2	
ART	261	Introductory Enameling	2-0-2		
ART	263	Jewelry: Introductory Casting		2-0-2	
ART ⁷	—	Electives: 4 hours each term	4-0-4	4-0-4	
PHL ⁸	—	Elective	3-0-3		
THL ³	—	Theology elective	4-0-4	3-0-3	
PSY	201	Introductory Psychology		3-0-3	
			18	17	
<i>Senior Year</i>					
ART	471	Development of Modern Art	3-0-3		
ART	472	Art in the Twentieth Century		3-0-3	
ART ⁹	—	Electives: 10 hours each term	10-0-10	10-0-10	
PHL ⁸	—	Elective		3-0-3	
SOC	203	General Sociology	3-0-3		
			16	16	

¹Under "Term," 3-0-3 means 3 hours class, 0 hours laboratory, and 3 hours credit.

²Women students take EdP 130-1; men not taking R.O.T.C. take EdP 101-2.

³Non-Catholic students take an elective.

⁴This course is taken at the Dayton Art Institute.

⁵Elect from Hst 251-2, 260, 265, 270 and 275.

⁶For women only.

⁷Electives must be used toward fulfillment of major requirements within the following principal professional divisions of the Department of Fine Arts: drawing, painting, sculpture, ceramics, crafts, graphics, and design (including advertising design and industrial design).

⁸Students may take Phl 456 Philosophy of Creativity or Phl 455 Philosophy of Art if these courses are offered.

⁹Select from upper level courses—seniors may take Art 490.

MINOR IN FINE ARTS

To minor in Fine Arts, 19 hours are required, 4 hours in upper level courses. Art 101-102 Introductory Drawing, and Art 111-112 Principles of Design must be taken before any of the other courses.

The student is to elect one Art History course. He then selects 8 hours in one, or at most two fields. The fields of choice are: Drawing, Design, Painting, Sculpture, Ceramics, Graphics, and Crafts. It is suggested that the student take one two-hour art course for four terms in order to allow for 8 hours of electives within the field or fields of his choice.

ART	101-2	Introductory Drawing	2-0-2	2-0-2
ART	111-2	Principles of Design	2-0-2	2-0-2
ART	—	Elect one History of Art Course	3-0-3	
ART ¹	—	Electives: 2 hours in each term	2-0-2	2-0-2
ART ¹	—	Electives: 2 hours in each term	2-0-2	2-0-2
			11	8

¹The elected courses can be taken from one, but not more than two of the following fields: Drawing, Design, Painting, Sculpture, Ceramics, Graphics, and Crafts, in order to get the 8 hours.

PROGRAM—A8: BACHELOR OF ARTS WITH A MAJOR IN HISTORY

Dept.	No.	Course	1st ¹ Term	2nd Term	3rd Term
<i>Freshman and Sophomore Years</i>					
Follow general requirements (p. 66)					
<i>Junior Year</i>					
HST	—	History electives	6-0-6	6-0-6	
PHL	—	Philosophy elective	3-0-3		
THL ²	—	Theology elective	3-0-3		
—	—	General elective		6-0-6	
—	—	Minor	3-0-3	3-0-3	
			15	15	
<i>Senior Year</i>					
HST ³	401	Pro-Seminar in History	3-0-2		
HST	—	History electives	6-0-6	6-0-6	
PHL	—	Philosophy elective		3-0-3	
THL ²	—	Theology elective	3-0-3		
—	—	General elective	3-0-3	3-0-3	
—	—	Minor	3-0-3	3-0-3	
			17	15	

¹Under "Term," 3-0-3 means 3 hrs. class, 0 hrs. laboratory, and 3 hrs. credit.

²Non-Catholic students take an elective.

³May be taken in either the first or second term.

**PROGRAM—A9: BACHELOR OF ARTS WITH A MAJOR IN
LANGUAGE**

<i>Dept.</i>	<i>No.</i>	<i>Course</i>	<i>1st Term</i>	<i>2nd Term</i>	<i>3rd Term</i>
<i>Freshman and Sophomore Years</i>					
Follow general requirements (p. 61)					
<i>Junior Year²</i>					
PHL	—	Philosophy elective		3-0-3	
THL ³	—	Theology elective	3-0-3		
—	—	General elective	3-0-3	3-0-3	
—	—	Language courses	6-0-6	6-0-6	
—	—	Minor	3-0-3	3-0-3	
			15	15	
<i>Senior Year⁴</i>					
PHL	—	Philosophy elective		3-0-3	
THL ³	—	Theology elective	3-0-3		
—	—	General elective	3-0-3	3-0-3	
—	—	Language courses	6-0-6	6-0-6	
—	—	Minor	3-0-3	3-0-3	
			15	15	

¹Under "Term," 3-0-3 means 3 hrs. class, 0 hrs. laboratory, and 3 hrs. credit.

²Students with a composite major arrangement may begin their second language in the fourth term, whether they continue the first language or not. A language major may minor in any other field approved in the College of Arts and Sciences, but a minor in languages is highly recommended.

³Non-Catholic students take an elective.

⁴It is recommended that students take any course, such as the history of a particular country or period, which will strengthen their grasp of the cultural background of the languages they are studying. It is possible also that in view of certain types of teaching or graduate work a student would elect special technical courses, such as psychology, statistics, etc. A good student with a background in two languages may be permitted to take as little as one term of a new language for reasons approved by the department chairman. In general, however, any additional language should be taken for a least two terms.



**PROGRAM—A10: BACHELOR OF ARTS WITH A MAJOR IN
MATHEMATICS**

<i>Dept.</i>	<i>No.</i>	<i>Course</i>	<i>1st Term¹</i>	<i>2nd Term</i>	<i>3rd Term</i>
<i>Freshman Year</i>					
ORI	100	Arts and Sciences Orientation	1-0-0		
ENG	101-6	Freshman English	3-0-3	3-0-3	
HST ²	—	History electives	3-0-3	3-0-3	
EDP ³	130-1	Physical Education	1-0-0	1-0-0	
MTH	128-9	Analytic Geometry and Calculus	4-0-4	4-0-4	
PHL	106	Basic Problems in Philosophy I	3-0-3		
THL ⁴	112	Foundations in Theology		3-0-3	
— ⁶	—	Modern Language Course	3-0-3	3-0-3	
			17	17	
<i>Sophomore Year</i>					
ENG	—	Sophomore English	3-0-3	3-0-3	
HST ²	—	American History elective		3-0-3	
MTH	228	Analytic Geometry and Calculus	4-0-4		
EDP ³	140	Personal and Community Health	2-0-2		
MTH	229	Differential Equations		3-0-3	
PHL	206	Basic Problems in Philosophy II	3-0-3		
SPE	101	Fundamentals in Effective Speaking	3-0-3		
THL ⁴	—	Theology elective		3-0-3	
—	—	Modern Language Course	3-0-3	3-0-3	
			16	15	

PROGRAM—A10—Continued

<i>Dept.</i>	<i>No.</i>	<i>Course</i>	<i>1st Term</i> ¹	<i>2nd Term</i>	<i>3rd Term</i>
<i>Junior Year</i>					
HST ²	—	American History elective	3-0-3		
MTH	361	Introduction to Abstract Algebra		3-0-3	
MTH	362	Introduction to Linear Algebra and Matrices	3-0-3		
MTH	—	Mth elective		3-0-3	
MTH	—	Mth elective	3-0-3		
CPS	147	PL/1 Programming		2-0-2	
PHL	—	Philosophy elective	3-0-3		
THL ⁴	—	Theology elective		3-0-3	
PSY	201	Introductory Psychology		3-0-3	
—	—	Minor	3-0-3	3-0-3	
			15	17	
<i>Senior Year</i>					
MTH	—	Mth elective	3-0-3	3-0-3	
MTH	421-2	Advanced Calculus	3-0-3	3-0-3	
THL ⁴	—	Elective	3-0-3		
SOC	204	Modern Social Problems		3-0-3	
PHL	—	Elective	3-0-3		
—	—	Minor	3-0-3	3-0-3	
			15	12	

¹Under "Term," 3-0-3 means 3 hrs. class, 0 hrs. laboratory, and 3 hrs. credit.

²See footnote 2, p. 64.

³Women only.

⁴Non-Catholic students take an elective.

⁶See footnote 6 on page 66.



PROGRAM—A11: BACHELOR OF ARTS WITH A MAJOR IN MUSIC

<i>Dept.</i>	<i>No.</i>	<i>Course</i>	<i>1st Term¹</i>	<i>2nd Term</i>	<i>3rd Term</i>
<i>Freshman Year</i>					
EdP ²	130-1	Physical Education	1-0-1	1-0-1	
ORI	100	Arts and Sciences Orientation	1-0-0		
ENG	101-6	Freshman English	3-0-3	3-0-3	
MUS	151-2	First Year Theory	5-0-4	5-0-4	
MUS	108	Intro. to Music Literature		2-0-2	
MUS ³	399	Applied Music	2-0-2	2-0-2	
PHL	—	Basic Problems in Philosophy	3-0-3		
THL ⁴	112	Theology elective		3-0-3	
— ⁶	—	Modern Language Course	3-0-3	3-0-3	
			15	17	
<i>Sophomore Year</i>					
ENG	—	Sophomore English	3-0-3	3-0-3	
EdP ²	140	Personal and Community Health	2-0-2		
MUS	251	Second Year Theory	5-0-4		
MUS	262	Musical Form		3-0-2	
PHL	206	Basic Problems in Philosophy II	3-0-3		
THL ⁴	—	Theology elective		3-0-3	
HST	—	History electives	3-0-3	3-0-3	
—	—	Modern Language Course	3-0-3	3-0-3	
SPE	101	Fund. of Effective Speaking		3-0-3	
			16	17	

²Women only.

PROGRAM—A11—Continued

<i>Dept.</i>	<i>No.</i>	<i>Course</i>	<i>1st Term</i> ¹	<i>2nd Term</i>	<i>3rd Term</i>
<i>Junior Year</i>					
MUS	301-2	History of Music I, II	3-0-3	3-0-3	
MUS ³	399	Applied Music	2-0-2	2-0-2	
HST	—	American History electives	3-0-3	3-0-3	
PHL	—	Philosophy elective		3-0-3	
—	—	Science course	3-3-4	3-3-4	
—	—	Minor	3-0-3	3-0-3	
THL	—	Theology elective	3-0-3		
			18	18	
<i>Senior Year</i>					
PHL	—	Philosophy elective	3-0-3		
THL	—	Theology electives	3-0-3		
—	—	Minor	3-0-3	3-0-3	
MUS ⁵	—	Music electives	4-0-4	4-0-4	
PSY	201	Intro. to Psychology	3-0-3		
Soc	205	Modern Social Problems		3-0-3	
—	—	Elective—Music or Academic		4-0-4	
			16	14	
Ensembles (ref. p. 236)			2-4 credits		

¹Under "Term," 3-0-3 means 3 hrs. class, 0 hrs. laboratory, and 3 hrs. credit.

²Women take required courses in Physical and Health Education (EdP).

³Piano, voice, organ, orchestral instrument; students with no previous study of piano will be required to take Music 296-7-8-9—Class Piano—one credit hour per term.

⁴Non-Catholic students take an elective.

⁵Select from Mus 322, 341, 315, 308, 300-400 courses in theory or composition, or additional applied music.

⁶See footnote 6 on page 66.



PROGRAM—A12: BACHELOR OF MUSIC

<i>Dept.</i>	<i>No.</i>	<i>Course</i>	<i>1st Term¹</i>	<i>2nd Term</i>	<i>3rd Term</i>
<i>Freshman Year</i>					
EDP ²	130-1	Physical Education	1-0-1	1-0-1	
ENG	101-6	Freshman English	3-0-3	3-0-3	
MUS	108	Intro. to Music Literature		2-0-2	
MUS	151-2	First Year Theory	5-0-4	5-0-4	
MUS ³	296-7	Class Piano I-II	1-0-1	1-0-1	
MUS ⁴	399	Applied Music	2-0-2	2-0-2	
PHL	106	Basic Problems in Philosophy I	3-0-3		
THL ⁵	152	Intro. to Sacred Literature		3-0-3	
HST	—	History Course	3-0-3		
ORI	100	Arts & Sciences Orientation	1-0-0		
			16-17	14-15	
<i>Sophomore Year</i>					
EDP ²	140	Personal and Community Health	2-0-2		
ENG	—	Sophomore English	3-0-3		
MUS	251	Second Year Theory	5-0-4		
MUS	262	Musical Form		3-0-2	
MUS	272	Keyboard Harmony		2-0-2	
MUS ³	298-9	Class Piano III-IV	1-0-1	1-0-1	
MUS	399	Applied Music	2-0-2	2-0-2	
PHL	206	Basic Problems in Philosophy II	3-0-3		
THL ⁵	—	Theology elective		3-0-3	
—	—	General electives	4-0-4	4-0-4	
HST	—	History course		3-0-3	
			16-17	16-17	

²Women only.

PROGRAM—A12—Continued

<i>Dept.</i>	<i>No.</i>	<i>Course</i>	<i>1st Term</i> ¹	<i>2nd Term</i>	<i>3rd Term</i>
<i>Junior Year</i>					
MUS	301-2	History of Music	3-0-3	3-0-3	
MUS	341	Conducting	3-0-3		
MUS ⁶	399	Applied Music (or 499) (6)	2-0-2	2-0-2	
MUS ⁷	—	Theory electives	2-0-2	2-0-2	
PHL	—	Philosophy electives	3-0-3	3-0-3	
PSY	201	Introductory Psychology		3-0-3	
SPE	101	Fundamentals of Effective Speaking	3-0-3		
—	—	General electives		4-0-4	
			16-18	17	
<i>Senior Year</i>					
MUS	—	Music Literature elective		2-0-2	
MUS ⁷	—	Music electives	14-0-14	12-0-12	
THL ⁵	—	Theology electives	3-0-3	3-0-3	
			17	17	
Ensembles (ref. p. 236)			4-6 credits		

¹Under "Term," 3-0-3 means 3 hrs. class, 0 hrs. laboratory, and 3 hrs. credit.

²Women take EdP 110-1.

³Class Piano required only of students who have not previously studied piano.

⁴Students majoring in theory, voice or orchestral instrument will be required to use piano or organ as a minor or demonstrate ability to perform at a level satisfactory to the department. Applied Music major: 24 hours.

⁵Non-Catholic students take an elective.

⁶Applied Music majors take Mus 499 for 4 hours credit; part of elective will be used for the additional hours in the second term.

⁷Electives must be used toward fulfillment of major and minor requirements in music. Major in Theory/Composition: 20-24 credit hours above 100 level. Minor, 12 credit hours above 100 level. Additional hours for remaining electives may be taken in Applied Music or theory courses, or Music 308, 315, 325, 326, 327, 328, 335, 361-2, 421-2, 451-2, 431-2, 322.



PROGRAM—A13: BACHELOR OF ARTS WITH A MAJOR IN PHILOSOPHY

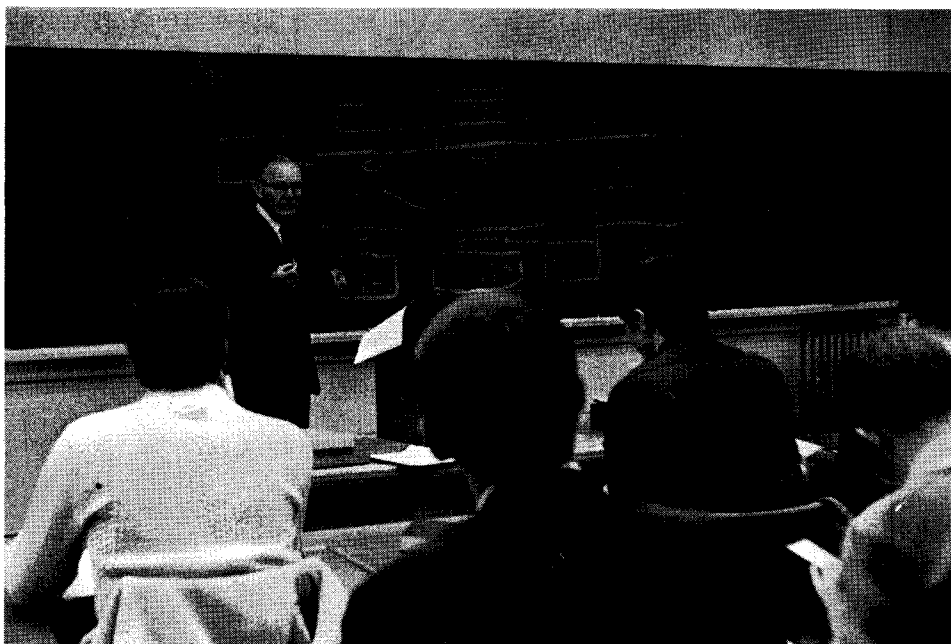
Dept.	No.	Course	1st Term ¹	2nd Term	3rd Term
<i>Freshman and Sophomore Years</i>					
Follow general requirements (p. 66)					
<i>Junior Year</i>					
PHL	303	Philosophy of Nature	3-0-3		
PHL	306	Philosophy of Knowledge	3-0-3		
PHL	308	Philosophy of Being		3-0-3	
PHL	312	Ethics		3-0-3	
THL	—	Theology elective		3-0-3	
—	—	Elective ²	3-0-3		
—	—	Minor	3-0-3	3-0-3	
—	—	Electives	3-0-3	3-0-3	
			15	15	
<i>Senior Year</i>					
PHL	310	Philosophy of God	3-0-3		
PHL	—	Elective		3-0-3	
PHL	—	Elective	3-0-3		
THL	—	Theology elective		3-0-3	
PHL	—	Philosophy elective		3-0-3	
—	—	Minor	3-0-3	3-0-3	
—	—	Electives	3-0-3	3-0-3	
—	—	Elective	3-0-3		
			15	15	

¹Under "Term," 3-0-3 means 3 hrs. class, 0 hrs. laboratory, and 3 hrs. credit.

**PROGRAM—A14: BACHELOR OF ARTS WITH A MAJOR IN
POLITICAL SCIENCE**

A student must successfully complete a minimum of 120 semester hours for the degree.

1. *Humanities*. 36 semester hours, chosen from courses offered by the Departments of Communication Arts, English, Fine Arts, History, Languages, Music, Philosophy, and Theological Studies. These must include Eng 101-106, Freshman English (6), six semester hours of history, and Phl 106-206, Basic Problems in Philosophy (6), and six semester hours of philosophy chosen from 300-400 level courses. Catholic students also take Thl 112, and nine hours chosen from other courses in the Department.
2. *Social and Behavioral Science*. Six semester hours chosen from courses offered in Economics, Psychology, Sociology, Anthropology, and Police Administration.
3. *Political Science*. 30 semester hours, which are to include Pol 101, Introduction to Political Science, Pol 201, American National Government, and 24 hours chosen from 300-400 level courses. The advanced courses are to be distributed among the various areas as shown under the Department heading in the catalog.
4. *Minor Subject*. One minor subject is studied, chosen from any of the Departments of the College of Arts and Sciences. The requirements of the Departments concerned are followed, but ordinarily twelve semester hours of 300-400 courses are required. Students who are accepted may minor in Secondary Education.
5. *Laboratory Science*. Eight semester hours of laboratory science.
6. *Tool of Research*. One of the following sequences:
 - A) completion of a foreign language at the intermediate level (202) or the equivalent as determined by the Department of Languages;
 - B) four terms of the following, in any combination:
 1. two terms of foreign language
 2. Acc 207-208
 3. Computer Science
 4. Mathematics
7. *Physical Education*. Full-time women students take EdP 130, 131, and 140.



PROGRAM—A15: BACHELOR OF SOCIAL SCIENCE WITH A MAJOR IN POLICE ADMINISTRATION

1. To be admitted to this Program a student must have received an associate degree in police administration, criminal justice, corrections, or a similar field of law enforcement. To receive the B.S.S. degree, a candidate must complete a minimum of 62 semester hours beyond the associate degree.
2. *Prerequisites.* One year of college English and an introductory course in sociology must be taken in addition to the degree requirements if they were not included in the associate program.
3. *Humanities.* A minimum of 18 hours is required in the Program, chosen from courses in Communication Arts, English, Fine Arts, History, Languages, Music, Philosophy, and Theological Studies. These must include Phl 106-206, Basic Problems in Philosophy (6). Catholic students also take six hours of Theological Studies.
4. *Social and Behavioral Sciences.* A minimum of 27 hours is required in the Program, chosen from courses in Economics, Political Science, Psychology, and Sociology and Anthropology. These must include Pol 201, American National Government; Pol 302, Ohio Government, or Pol 303, State and Local Government; Soc 307, Criminology and Penology; and Soc 313, Juvenile Delinquency.
5. *Police Administration.* A minimum of 10 hours is required in the Program, including Pad 313, Criminal Law and Procedure, and Pad 460, Research in Police Administration.



**PROGRAM—A16: BACHELOR OF ARTS WITH A MAJOR IN
PSYCHOLOGY**

<i>Dept.</i>	<i>No.</i>	<i>Course</i>	<i>1st Term¹</i>	<i>2nd Term</i>	<i>3rd Term</i>
<i>Freshman Year</i>					
AAS	100	Orientation	1-0-0		
BIO	101-2	Biology	3-3-4	3-3-4	
ENG	101-6	Freshman English	3-0-3	3-0-3	
HST ²	—	History elective	3-0-3	3-0-3	
EdP ³	130-1	Physical Education	1-2-1	1-2-1	
PHL	106	Basic Problems in Philosophy I	3-0-3		
THL ⁵	112	Foundations in Theology		3-0-3	
— ⁴	—	Language elective	3-0-3	3-0-3	
			17	17	
<i>Sophomore Year</i>					
ENG	—	Sophomore English	3-0-3	3-0-3	
HST ²	—	American History elective	3-0-3	3-0-3	
PHL	206	Basic Problems in Philosophy II	3-0-3		
PSY	201	Introductory Psychology	3-0-3		
THL ⁵	—	Theology elective		3-0-3	
— ⁴	—	Language Course	3-0-3	3-0-3	
PSY	—	Psychology elective		3-0-3	
EdP ³	140	Personal and Community Health	2-0-2		
			17	15	

PROGRAM—A16—Continued

<i>Dept.</i>	<i>No.</i>	<i>Course</i>	<i>1st Term</i> ¹	<i>2nd Term</i>	<i>3rd Term</i>
<i>Junior Year</i>					
PHL	—	Philosophy elective		3-0-3	
— ⁶	—	General elective	3-0-3	3-0-3	
PSY	—	Psychology elective	3-0-3	6-0-6	
PSY	302	Elementary Statistics	3-0-3		
SPE	101	Fundamentals of Effective Speaking		3-0-3	
THL ⁵	—	Theology elective	3-0-3		
—	—	Minor	3-0-3		
			15	15	
<i>Senior Year</i>					
PHL	—	Philosophy elective	3-0-3		
PSY	—	Psychology elective	3-0-3	6-0-6	
PSY	308	Experimental Psychology	3-2-4		
THL ⁵	—	Theology elective	3-0-3		
— ⁶	—	General elective		3-0-3	
—	—	Minor	3-0-3	6-0-6	
			16	15	

¹Under "Term," 3-0-3 means 3 hrs. class, 0 hrs. laboratory, and 3 hrs. credit.

²Freshmen elect 6 hrs. from Hst 120, 125, 130, 135, 101, 102—Sophomore elect from 200 level.

³Women only.

⁴See footnote 6, page 66, French, German, or Russian preferred.

⁵Non-Catholic students take an elective.

⁶Certain mathematics courses are recommended for students planning to pursue graduate study.

**PROGRAM—A17: BACHELOR OF ARTS WITH A MAJOR IN
SOCIOLOGY OR ANTHROPOLOGY
(129 Credit Hours)**

<i>Dept.</i>	<i>No.</i>	<i>Course</i>	<i>1st Term</i> ¹	<i>2nd Term</i>	<i>3rd Term</i>
<i>Freshman Year — Sociology and Anthropology Majors</i>					
ORI	100	Arts and Sciences Orientation	1-0-0		
ENG	101-6	Freshman English	3-0-3	3-0-3	
HST ²	—	History electives	3-0-3	3-0-3	
EdP ³	130-1	Physical Education	1-1-1	1-1-1	
PHL	106	Basic Problems of Philosophy I	3-0-3		
THL ⁴	112	Foundations in Theology		3-0-3	
— ⁵	—	Modern Language Course	3-0-3	3-0-3	
—	—	Science Course	3-2-4	3-2-4	
			17	17	
<i>Sophomore Year — Sociology Majors</i>					
ENG	—	Sophomore English	3-0-3	3-0-3	
HST ²	—	American History electives	3-0-3	3-0-3	
EdP ³	140	Personal and Community Health	2-0-2		
PHL	206	Basic Problems of Philosophy II	3-0-3		
PSY	201	Introductory Psychology		3-0-3	
Soc	205	Principles of Sociology	3-0-3		
THL ⁴	—	Theology elective		3-0-3	
— ⁵	—	Modern Language Course	3-0-3	3-0-3	
			17	15	



PROGRAM—A17—Continued

<i>Dept.</i>	<i>No.</i>	<i>Course</i>	<i>1st Term¹</i>	<i>2nd Term</i>	<i>3rd Term</i>
<i>Sophomore Year — Anthropology</i>					
ENG	—	Sophomore English	3-0-3	3-0-3	
HST ²	—	American History electives	3-0-3	3-0-3	
EDP ⁶	140	Personal and Community Health	2-0-2		
PHL	206	Basic Problems of Philosophy II	3-0-3		
ANT	320	Introduction to Cultural Anthropology	3-0-3		
ANT	321	Introduction to Physical Anthropology and Archaeology		3-0-3	
THL ⁴	—	Theology elective		3-0-3	
— ⁵	—	Modern Language Course	3-0-3	3-0-3	
			17	15	
<i>Junior Year — Sociology Majors</i>					
PHL	—	Philosophy elective (300 or 400 level)	3-0-3		
SOC	401-2	Social Research Methods and Statistics	3-0-3	3-0-3	
SOC	420	Classical Sociological Theory	3-0-3		
SOC	422	Contemporary Sociological Theory		3-0-3	
SOC or ANT ⁷		Sociology or Anthropology elective		3-0-3	
SPE	101	Fundamentals of Effective Speaking	3-0-3		
THL ⁴	—	Theology electives		3-0-3	
—	—	Minor	3-0-3	3-0-3	
			15	15	
<i>Junior Year — Anthropology Majors</i>					
PHL	—	Philosophy elective (300 or 400 level)	3-0-3		
ANT	400	Language and Culture		3-0-3	
SOC	401-2	Social Research Methods and Statistics	3-0-3	3-0-3	
ANT	403	Primitive Religion		3-0-3	
PSY	201	Introductory Psychology	3-0-3		
SPE	101	Fundamentals of Effective Speaking	3-0-3		
THL ⁴	—	Theology electives		3-0-3	
—	—	General elective		3-0-3	
—	—	Minor	3-0-3	3-0-3	
			15	18	

PROGRAM—A17—Continued

Dept.	No.	Course	1st Term ¹	2nd Term	3rd Term
<i>Senior Year — Sociology Majors</i>					
THL ⁴	—	Theology elective	3-0-3		
PHL	—	Philosophy elective (300 or 400 level)		3-0-3	
Soc	415	Senior Seminar in Sociology		3-0-3	
	Soc or ANT ⁶	Sociology or Anthropology electives	6-0-6	3-0-3	
—	—	General electives	6-0-6	3-0-3	
—	—	Minor	3-0-3	3-0-3	
			18	15	
<i>Senior Year — Anthropology Majors</i>					
PHL	—	Philosophy elective (300 or 400 level)		3-0-3	
ANT	322	Culture and Personality	3-0-3		
ANT	406	Social Change	3-0-3		
ANT	408	Culture Area Studies		3-0-3	
Soc ⁶	—	Sociology elective		3-0-3	
THL ⁴	—	Theology elective	3-0-3		
—	—	General electives	3-0-3	3-0-3	
—	—	Minor	3-0-3	3-0-3	
			15	15	

¹Under "Term," 3-0-3 means 3 hrs. class, 0 hrs. laboratory, and 3 hrs. credit.

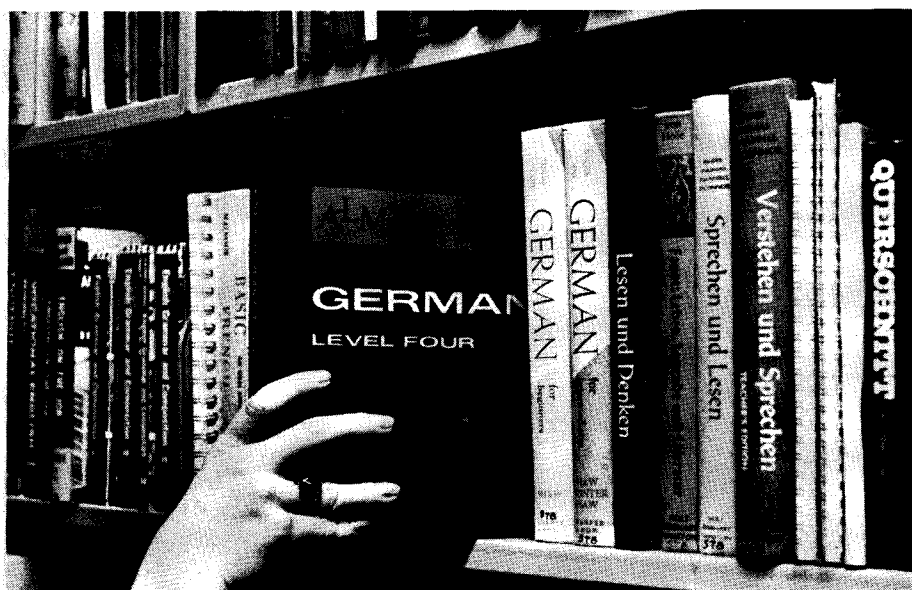
²See footnote 2, p. 66.

³Applies to women only.

⁴Non-Catholic students take an elective.

⁵See footnote 6 on page 66.

⁶Sociology and Anthropology electives: Soc 204, 301, 303, 307, 313, 315, 318, 325, 328, 412, 426, 435W and 439; Ant 320, 321, 400, 403, 406, 408, 433, and 439.



PROGRAM—A18: BACHELOR OF ARTS WITH A MAJOR IN THEOLOGICAL STUDIES

A student must successfully complete a minimum of 124 semester hours for the degree.

1. *Tools of Research*. The student must satisfy the basic requirements in Freshman English, Foreign Languages and Speech. See page 66—General Requirements.
2. *Military Science/Physical Education*. Basic university requirement.
3. *Laboratory Science*. Eight semester hours.
4. *Humanities*. Thirty semester hours in Philosophy (twelve semester hours), Literature, History, Fine Arts, Communication Arts.
5. *Social and Behavioral Science*. Twelve semester hours in Economics, Political Science, Psychology and Sociology-Anthropology.
6. *Minor*. Twelve semester hours of 300-400 courses in an area accepted by the College of Arts and Sciences.
7. *Theological Studies*. Thirty semester hours, including the basic required course.
8. *Electives*. Sufficient to total 124 semester hours.

PROGRAM—S1: BACHELOR OF SCIENCE WITH A MAJOR IN BIOLOGY

Biology Major Curriculum

Requirements:

Major (Core courses as listed in program S-1)	23	}	Science 69
Science required (CHEM., PHYSICS, MATH.)	34		
Science electives (BIO., CHEM., PHYSICS, MATH, etc.)	12		
Study of man (THL., PHL., SOC., PSY.)	18	}	Humanities 33
Humanities electives	15		
English, Languages or General Electives	22	}	General 22
	<hr/> 124		<hr/> 124

Study of Man electives include theology, philosophy, psychology, sociology and similar courses.

Humanities electives are to be selected from the various courses which would broaden the individual's approach to reality.

General electives are non-specified courses which add flexibility to the program.

Science electives include physics, chemistry, mathematics, computer science and the following biology courses:

Bio. 209 Comparative Anatomy	407 Embryology
Bio. 303 Physiology	411 General Bacteriology
Bio. 310 Microtechnique and Histology	434 Higher Plants
Bio. 325 Parasitology	436 Lower Plants
Bio. 361 Invertebrate Zoology	466 Pathogenic Bacteriology and Serology

Biology majors, with the permission of their advisor, may take one biology *elective* course on a Pass-Fail basis.

With permission of the Chairman, advanced students may also elect one or more graduate courses.

<i>Dept.</i>	<i>No.</i>	<i>Course</i>	<i>1st Term¹</i>	<i>2nd Term</i>	<i>3rd Term</i>
<i>Freshman Year</i>					
BIO	000	Freshman Seminar	1-0-0		
BIO	101	General Biology		3-3-4	
CHM	123-4	General Chemistry	3-3-4	3-3-4	
ENG	101-6	Freshman English	3-0-3	3-0-3	
MTH ³	112-113	Introductory Mathematical Analysis	3-0-3	3-0-3	
— ⁴	—	Study of Man elective	3-0-3		
ORI	100	Arts and Sciences Orientation	1-0-0		
EDP ²	100-131	Physical Education	0-2-1	0-2-1	
			14	15	
<i>Sophomore Year</i>					
BIO	102	General Biology	3-3-4		
BIO	340	Cellular Biology		3-0-3	
CHM	313-4	Organic Chemistry	3-3-4	3-3-4	
— ⁵	—	Study of Man elective	3-0-3		
PHY	201-2	General Physics	3-2-4	3-2-4	
EDP ⁶	140	Personal and Community Health		2-0-2	
ENG	2—	Sophomore English		3-0-3	
			15	16	

PROGRAM—S1—Continued

<i>Dept.</i>	<i>No.</i>	<i>Course</i>	<i>1st Term</i> ¹	<i>2nd Term</i>	<i>3rd Term</i>
<i>Junior Year</i>					
Bio	312	General Genetics	3-0-3		
Bio	342	Developmental Biology		3-0-3	
Bio	344L-345L	Advanced Biology Laboratory	0-3-1	0-3-1	
CHM ⁷	—	Chemistry elective	3-3-4		
—	—	Humanities elective	3-0-3	3-0-3	
—	—	Modern Language	3-0-3	3-0-3	
— ⁸	—	General electives	3-0-3	3-0-3	
— ⁹	—	Study of Man elective		3-0-3	
			17	16	
<i>Senior Year</i>					
Bio	440	Environmental Biology	3-0-3		
Bio ¹⁰	420	Seminar	1-0-1		
— ¹¹	—	Science elective	3-3-4	6-6-8	
— ¹²	—	Study of Man elective	3-0-3	3-0-3	
—	—	Humanities elective	6-0-6	3-0-3	
			17	14	

¹Under "Term," 3-0-3 means 3 hrs. class, 0 hrs. laboratory, and 3 hrs. credit.

²Mil 101-102 optional for men.

³May substitute depending on background and score on placement test.

⁴Phl 106 or Thl 112.

⁵Phl 206 or Thl elective; non-Catholics take Psych., Soc., Eco., etc.

⁶Women only, men take elective.

⁷Chm 201, 302 or 420.

⁸Spe 101 in either semester.

⁹Thl elective; non-Catholics take general elective.

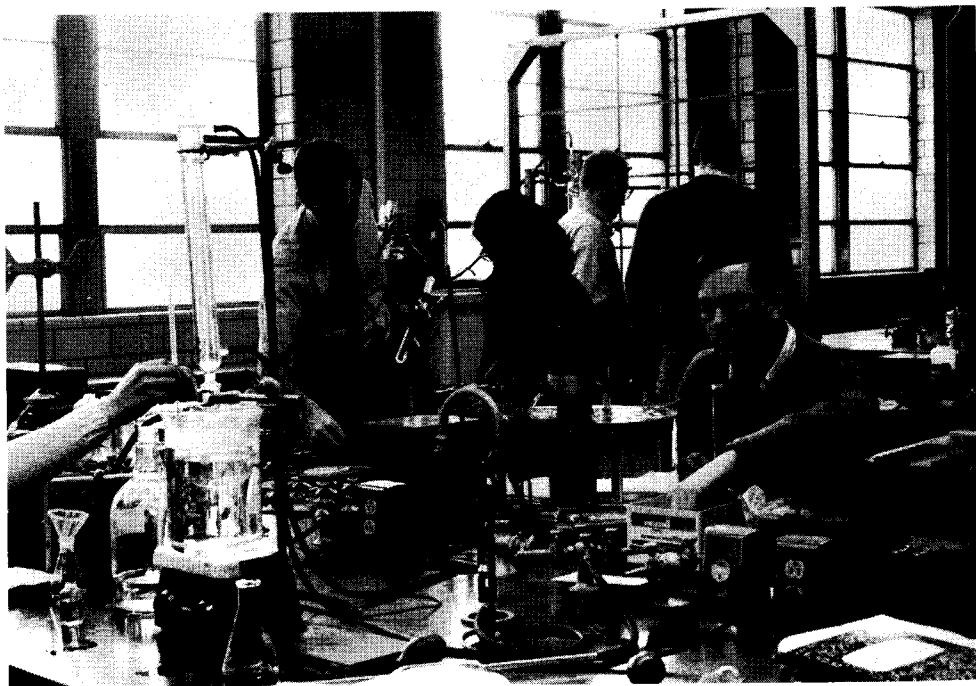
¹⁰Either semester.

¹¹Any other Bio., Chm., Phy., Mth., Cps course as needed. One Bio. elective may be taken on a Pass-Fail basis.

¹²Thl electives to total 12 cr. Non-Catholics take humanities or Phl., etc.

**PROGRAM—S2: BACHELOR OF SCIENCE WITH A MAJOR IN
CHEMISTRY**

<i>Dept.</i>	<i>No.</i>	<i>Course</i>	<i>1st Term¹</i>	<i>2nd Term</i>	<i>3rd Term</i>
<i>Freshman Year</i>					
CHM	123-4	General Chemistry	3-3-4	3-3-4	
ENG	101-6	Freshman English	3-0-3	3-0-3	
MTH	101	Precalculus Math	5-0-3		
MTH	128	Analytical Geometry & Calculus I		4-0-4	
GER ⁴	—	German	3-0-3	3-0-3	
THL ²	112	Foundations in Theology	3-0-3		
SPE	101	Fundamentals of Effective Speaking		3-0-3	
ORI	100	Arts and Sciences Orientation	1-0-0		
			16	17	
<i>Sophomore Year</i>					
CHM	215	Quantitative Analysis	2-6-4		
CHM	315	Organic Chemistry		3-6-5	
PHL	106	Basic Problems in Philosophy I	3-0-3		
PHL	206	Basic Problems in Philosophy II		3-0-3	
EDP	140	Personal and Community Health	2-0-2		
MTH	129-228	Analytical Geometry & Calculus II, III	4-0-4	4-0-4	
PHY	196	General Physics I	3-2-4		
PHY	207	General Physics II		3-2-4	
			17	16	



PROGRAM—S2—Continued

<i>Dept.</i>	<i>No.</i>	<i>Course</i>	<i>1st Term</i> ¹	<i>2nd Term</i>	<i>3rd Term</i>
<i>Junior Year</i>					
CHM	303-4	Physical Chemistry	3-3-4	3-3-4	
CHM	308	Chemical Literature		2-0-2	
CHM	316	Organic Chemistry	3-6-5		
CHM	405	Qualitative Organic Analysis		1-6-3	
—	—	General electives ⁸	3-0-3	3-0-3	
PHY	208	General Physics III	3-2-4		
THL ⁵	—	Theology elective		3-0-3	
			16	15	
<i>Senior Year</i>					
CHM	415	Analytical Chemistry	2-6-4		
CHM	417	Inorganic Chemistry		3-0-3	
CHM	497	Seminar	1-0-1		
CHM ⁶	—	Chemistry electives	3-0-3	6-0-6	
—	—	General electives ⁹	3-0-3	3-0-3	
THL ⁷	—	Theology electives	3-0-3	3-0-3	
			14	15	

¹Under "Term," 3-0-3 means 3 hrs. class, 0 hrs. laboratory, and 3 hrs. credit.

²Non-Catholic students take an elective.

³Chm 313-4 may be substituted with permission of the department chairman.

⁴Students with 2 or more years of high school German take Ger 201-2; all others take Ger 101-2.

⁵Non-Catholic students take an elective.

⁶Chemistry electives: Chm 404, 412, 416, 420, 499.

⁷Non-Catholic students take a General elective.

⁸General electives: Soc 204, Pol 201, Acc 207-8, Bus 315, Mth 219. One course in advanced mathematics or advanced physics may be taken. Other electives may be taken with the approval of the department chairman.

**PROGRAM—S3: BACHELOR OF SCIENCE WITH A MAJOR IN
COMPUTER SCIENCE**

Minimum graduation requirements are distributed as follows:

A. COURSES ASSOCIATED WITH THE MAJOR (about 50 credits)

1. **COMPUTER SCIENCE**—a course in basic programming, normally Cps 147, and 24 credits in upper-level courses, normally including two courses in the area of numerical methods or analysis, Cps 345 and Cps 441 in the area of programming, and Cps 383 in the area of logic.
2. **MATHEMATICS**—basic calculus and normally 12 credits beyond calculus, including Mth 362.

B. COURSES IN OTHER AREAS (about 50 credits)

3. **HUMANITIES**—30 credits, including 6 credits in Theological Studies for Catholic students and 6 credits in Philosophy. It is recommended that 12 credits be concentrated in one area of the humanities. Eng 101, Eng 106 and Spe 101 do not apply to this requirement.
4. **SCIENCES**—normally 12 credits, including Chm 123, 124, and Phy 196, 207.
5. **COMPOSITION AND SPEECH SKILLS**—A certain level of proficiency is required in these skills. Eng 101, 106, Spe 101 may be prescribed by the department or elected by the student to assist in attaining the minimum proficiency.
6. **PHYSICAL EDUCATION**—if prescribed by the general university requirements.

C. ELECTIVES (about 25 credits)

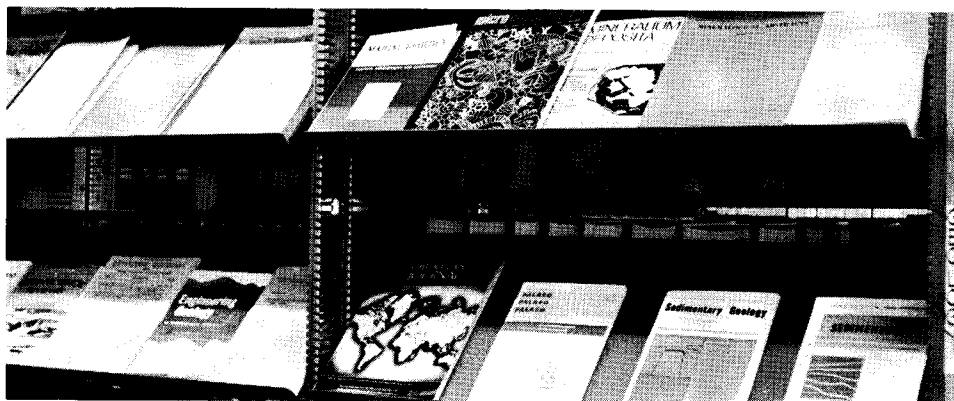
7. Additional courses to attain the required 124 credits.

More detailed information may be obtained from the department.

**PROGRAM—S4: BACHELOR OF SCIENCE WITH A MAJOR IN
GEOLOGY**

<i>Dept.</i>	<i>No.</i>	<i>Course</i>	<i>1st Term¹</i>	<i>2nd Term</i>	<i>3rd Term</i>
<i>Freshman Year</i>					
EdP ²	112-113	Physical Education	1-0-1	1-0-1	
ENG	101-6	Freshman English	3-0-3	3-0-3	
GEO	115	Physical Geology	3-2-4		
GEO	116	Historical Geology		3-2-4	
MTH ³	128-9	Analytic Geometry and Calculus I	4-0-4	4-0-4	
PHL	106	Basic Problems in Philosophy I		3-0-3	
THL ⁴	112	Foundations in Theology	3-0-3		
ORI	100	Arts and Sciences Orientation	1-0-0		
			14	14	
<i>Sophomore Year</i>					
CHM	123-4	General Chemistry	3-3-4	3-3-4	
EdP ²	140	Personal and Community Health	2-0-2		
GEO	201	Mineralogy	3-3-4		
GEO	204	Optical Mineralogy		2-4-4	
PHL	206	Basic Problems in Philosophy II		3-0-3	
PHY ⁵	201-2	General Physics	3-2-4	3-2-4	
THL ⁴	—	Theology elective	3-0-3		
			17	15	





PROGRAM—S4—Continued

<i>Dept.</i>	<i>No.</i>	<i>Course</i>	<i>1st Term¹</i>	<i>2nd Term</i>	<i>3rd Term</i>
<i>Junior Year</i>					
GEO	309	Petrography		3-2-4	
GEO	301	Structural Geology	3-2-4		
—	—	Non-science elective		3-0-3	
SPE	101	Fundamentals of Effective Speaking	3-0-3		
THL ⁴	—	Theology elective	3-0-3		
—	—	Modern language course	3-0-3	3-0-3	
—6	—	Science elective	3-3-4	3-3-4	
			17	14	
<i>Senior Year</i>					
GEO	303	Field Geology			x-0-6
GEO	—	Geology elective	3-2-4	3-2-4	
—	—	Non-science elective		3-0-3	
THL ⁴	—	Theology elective	3-0-3		
—	—	Electives	3-0-3	3-0-3	
—6	—	Science elective	3-2-4	3-2-4	
			14	14	6

¹Under "Term," 3-0-3 means 3 hrs. class, 0 hrs. laboratory, and 3 hrs. credit.

²Women only.

³May substitute Mth 112-3 with permission of department chairman.

⁴Non-Catholic students take an elective.

⁵May substitute Phy 196-207 if Mth is taken in sequence.

⁶Choose from courses in chemistry, mathematics, physics, biology, geology, or engineering.

HOME ECONOMICS

The department provides two special curricula:

1. Dietetics and Institutional Management;
2. General Home Economics.

Students following these curricula may pursue a career in homemaking, interior decorating, the creating and construction of clothing; in the management of cafeterias, dormitories, and restaurants; as demonstrators for commercial manufacturing concerns; as dietitians in hospitals and other institutions; in graduate work and in research projects.

The curriculum for dietetics and institutional management meets the requirements of the American Dietetics Association. The department is one of eight in Ohio that meets the standards for vocational certification.

PROGRAM—S5: BACHELOR OF SCIENCE WITH A MAJOR IN HOME ECONOMICS (General Home Economics)

<i>Dept.</i>	<i>No.</i>	<i>Course</i>	<i>1st Term¹</i>	<i>2nd Term</i>	<i>3rd Term</i>
<i>Freshman Year</i>					
BIO ²	101-2	General Biology	3-3-4	3-3-4	
ENG	101-6	Freshman English	3-0-3	3-0-3	
HEC ³	102-201	Foods I & II	2-3-3	2-3-3	
— ⁴	—	History electives	3-0-3	3-0-3	
EDP	130-1	Physical Activities	1-2-1	1-2-1	
PHL	106	Basic Problems in Philosophy I		3-0-3	
THL ⁵	112	Foundations in Theology	3-0-3		
ORI	100	Arts and Sciences Orientation	1-0-0		
			17	17	



PROGRAM—S5—Continued

<i>Dept.</i>	<i>No.</i>	<i>Course</i>	<i>1st Term¹</i>	<i>2nd Term</i>	<i>3rd Term</i>
<i>Sophomore Year</i>					
ENG	203, 204 or 205	English		3-0-3	
HEC ³	101-211	Clothing I & II	2-3-3	2-3-3	
HEC	105	Related Art	3-0-3		
HEC	214	Textiles		3-0-3	
—	—	Modern Language	3-0-3	3-0-3	
EDP	140	Personal and Community Health	2-0-2		
PHL	206	Basic Problems in Philosophy II		3-0-3	
Soc	204	Modern Social Problems	3-0-3		
THL ⁵	—	Theology elective	3-0-3		
			17	15	
<i>Junior Year</i>					
HEC	221	Home Management	3-0-3		
HEC	225	Child Development	3-0-3		
HEC	303	Nutrition and Health		3-0-3	
HEC	309	Household Equipment	3-0-3		
HEC	318	Family Living		3-0-3	
HEC	328	Home Furnishing and Housing		3-0-3	
PSY	201	General Psychology	3-0-3		
SPE	101	Fundamentals of Effective Speech		3-0-3	
THL ⁶	—	Theology elective	3-0-3		
—	—	Minor, Major or Elective ⁷	3-0-3	3-0-3	
			18	15	
<i>Senior Year</i>					
HEC	406	Home Management II	1-4-3		
HEC	—	Home Economics electives	3-0-3	6-0-6	
THL ⁶	—	Theology elective		3-0-3	
—	—	Minor, Major or Electives ⁷	9-0-9	9-0-9	
			15	18	

¹Under "Term," 3-0-3 means 3 hrs. class, 0 hrs. laboratory, and 3 hrs. credit.²May substitute Chm 123-4 or Chm 110-200.³Foods I & II and Clothing I & II may be interchanged.⁴Student may elect any lower division Hst courses.⁵Non-Catholic students take an elective⁶Non-Catholic students take an elective.⁷Can be taken in English, psychology, retailing, history, or education. Students choosing education must take Edu 208, 351, 419, and Hec 329, 405, and Chm 110-200 or 123-4. Hec courses must total 51 hours.



**PROGRAM—S6: BACHELOR OF SCIENCE WITH A MAJOR IN
HOME ECONOMICS (Dietetic Internship)**

<i>Dept.</i>	<i>No.</i>	<i>Course</i>	<i>1st Term¹</i>	<i>2nd Term</i>	<i>3rd Term</i>
<i>Freshman Year</i>					
BIO	101	General Biology		3-3-4	
CHM	123-4	General Chemistry	3-3-4	3-3-4	
ENG	101-6	Freshman English	3-0-3	3-0-3	
HEC	102-201	Foods I and II	2-3-3	2-3-3	
EDP	130-1	Physical Activities	1-2-1	1-2-1	
PHL	106	Basic Problems in Philosophy I	3-0-3		
SPE	101	Fundamentals of Effective Speaking		3-0-3	
THL ²	112	Foundations of Theology	3-0-3		
ORI	100	Arts and Sciences Orientation	1-0-0		
			17	18	
<i>Sophomore Year</i>					
BIO	102	General Biology	3-3-4		
CHM ³	313-4	Organic Chemistry	3-3-4	3-3-4	
ENG	—	English elective		3-0-3	
HEC	221	Home Management I	3-0-3		
HEC	225	Child Development I	3-0-3		
EDP	140	Personal and Community Health	2-0-2		
PHL	206	Basic Problems in Philosophy II		3-0-3	
PSY	201	General Psychology		3-0-3	
THL ²	—	Theology elective		3-0-3	
			16	16	

PROGRAM—S6—Continued

<i>Dept.</i>	<i>No.</i>	<i>Course</i>	<i>1st Term</i> ¹	<i>2nd Term</i>	<i>3rd Term</i>
<i>Junior Year</i>					
ACC	207	Principles of Accounting	3-0-3		
EDP ⁴	205-6	Anatomy and Physiology	3-0-3	3-0-3	
CHM ⁵	400	Biochemistry		3-3-4	
HEC	303	Nutrition and Health	3-0-3		
HEC	304	Quantity Cookery		1-4-3	
HEC	308	Institutional Buying	3-0-3		
HEC	323	Demonstration Methods		0-2-1	
THL ²	—	Theology elective		3-0-3	
—	—	Elective	3-0-3	3-0-3	
			15	17	
<i>Senior Year</i>					
BIO	411	General Bacteriology	3-4-5		
HEC	318	Family Living		3-0-3	
HEC	401	Advanced Nutrition		3-0-3	
HEC	402	Diet in Disease		3-0-3	
HEC	406	Home Management II		1-4-3	
HEC	407	Organization and Management	3-0-3		
PSY	420	Industrial Psychology		3-0-3	
THL ²	—	Theology elective	3-0-3		
HEC ⁶	405	Methods of Teaching	3-0-3		
—	—	Electives	3-0-3		
			17	15	

¹Under "Term," 3-0-3 means 3 hrs. class, 0 hrs. laboratory, and 3 hrs. credit.

²Non-Catholic students take an elective.

³May take Chm 200 with permission.

⁴May take Bio 303 with permission.

⁵May take Chm 420 if Chm 302 or 304 is elected.

⁶May take EdF 208 with permission.

**PROGRAM—S7: BACHELOR OF SCIENCE WITH A MAJOR IN
MATHEMATICS OR MATHEMATICAL STATISTICS**

<i>Dept.</i>	<i>No.</i>	<i>Course</i>	<i>1st Term¹</i>	<i>2nd Term</i>	<i>3rd Term</i>
<i>Freshman Year</i>					
ORI	100	Arts and Sciences Orientation	1-0-0		
CHM	123-4	General Chemistry	3-3-4	3-3-4	
CPS	147	PL/I Programming		2-0-2	
MTH	128-9	Analytic Geometry and Calculus	4-0-4	4-0-4	
PHL	—	Philosophy ³	3-0-3		
PHY	196	General Physics		3-2-4	
—	—	Electives ⁴	3-0-3	3-0-3	
EdP ²	130-1	Physical Education	2-0-2		
			16	17	
<i>Sophomore Year</i>					
MTH	228	Analytic Geometry and Calculus	4-0-4		
MTH	229	Differential Equations		3-0-3	
PHY	207-8	General Physics	3-2-4	3-2-4	
—	—	Humanities ³	3-0-3	6-0-6	
—	—	Electives	6-0-6	3-0-3	
EdP ²	140	Personal and Community Health		2-0-2	
			17	18	



PROGRAM—S7—Continued

<i>Dept.</i>	<i>No.</i>	<i>Course</i>	<i>1st Term</i> ¹	<i>2nd Term</i>	<i>3rd Term</i>
<i>Junior Year</i>					
—	—	Mathematics Elective ⁵	3-0-3		
—	—	Mathematics Elective		3-0-3	
—	—	Mathematics Elective	3-0-3	3-0-3	
—	—	Minor	3-0-3	3-0-3	
—	—	Humanities ³	3-0-3	6-0-6	
—	—	Electives	3-0-3		
			15	15	
<i>Senior Year</i>					
—	—	Mathematics Elective	3-0-3		
—	—	Mathematics Elective		3-0-3	
—	—	Mathematics Elective	3-0-3	3-0-3	
—	—	Minor	3-0-3	3-0-3	
—	—	Humanities ³	3-0-3	6-0-6	
—	—	Electives	3-0-3		
			15	15	

¹Under "Term," 3-0-3 means 3 hrs. class, 0 hrs. laboratory, and 3 hrs. credit.

²Women only.

³The 30 hrs. in Humanities should include 6 hrs. Theology for Catholic students and 6 hrs. Philosophy. Normally 12 hrs. should be concentrated in one area of the Humanities.

⁴The general requirement in communication skills should be satisfied as soon as possible.

⁵All students majoring in Mathematics or Statistics will elect Mth 361, 362, 421, 422 as core courses and twelve hours of other mathematics courses in consultation with the Chairman of the Department. Students minoring in Physics will elect Mth 403 when registering for Phy 303.

MEDICAL TECHNOLOGY

A twelve or thirteen month course in medical technology is offered by the Diagnostic Laboratories of St. Elizabeth Hospital, Good Samaritan Hospital, and Miami Valley Hospital. Affiliation with the University of Dayton permits a student to obtain the degree of Bachelor of Science in Medical Technology if the University's requirements are fulfilled. These schools are accredited by the Registry of Medical Technologists of the American Society of Clinical Pathologists through the Council on Medical Education and Hospitals of the American Medical Association, and qualify a student to take the examination given by the Registry of Medical Technologists.

The student receives practical and theoretical experience in the various branches of the clinical laboratory, after which he is qualified for positions in hospitals, clinics, research laboratories, and physicians' offices.

METHODS OF INSTRUCTION

After a preliminary concentrated introduction to medical technology, the student participates in the activities of the Diagnostic Laboratories, spending a specific time in each department. Instruction is under the supervision of the pathologist and his staff. Regular assignments in recognized textbooks and laboratory periodicals are given. Conferences and examinations are held throughout the year. Following a review period at the end of the prescribed course, a final examination, patterned after that of the Registry of Medical Technologists, is given.

ADMISSION REQUIREMENTS

In planning for the hospital experience, the student is required to arrange for an interview with the pathologist at the approved School of Medical Technology at the hospital. He should also plan to visit each hospital for the purpose of seeing the facilities of the diagnostic laboratories. His choice of school must be stated in writing to both the pathologist at the school of medical technology, and the advisor of the medical technology students at the University. This must be done no later than February 1, if he intends to begin training at the hospital in June. The University advisor will submit letters of recommendation to each school of medical technology in behalf of the student seeking the interview. The Registry requires 90 semester hours of academic work for admission to the clinical year in the hospital.

SENIOR YEAR SCHOLARSHIP

A full tuition scholarship is made available for the senior year. This includes room and board for the women students; it may not be possible to secure housing for male students. Students provide their own uniforms and textbooks.

LENGTH OF CLINICAL COURSE

The course of instruction covers a period of fifty-two to fifty-six consecutive weeks. If vacation period or leave of absence is granted, additional equivalent time must be made up in the school of medical technology. The hours of duty are from 8 a.m. to 5 p.m., five days a week. Special assignments for Sunday and holiday work are given with time off during the week. There is no night call for students.

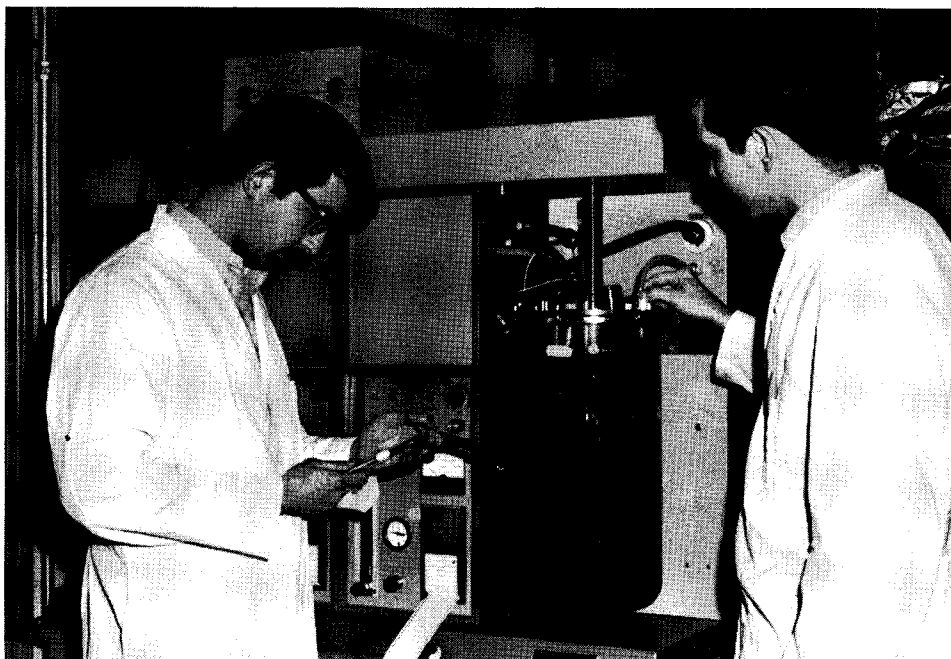
Textbook assignments and extracurricular reading and study shall be done outside the regular hours. Written and oral examinations are held at regular intervals throughout the course.

GRADUATION AND REGISTRATION

After demonstrating a theoretical and practical proficiency in clinical laboratory procedures, the student is given a certificate by the hospital, and becomes eligible for the national examination for certification by the Registry of Medical Technology.

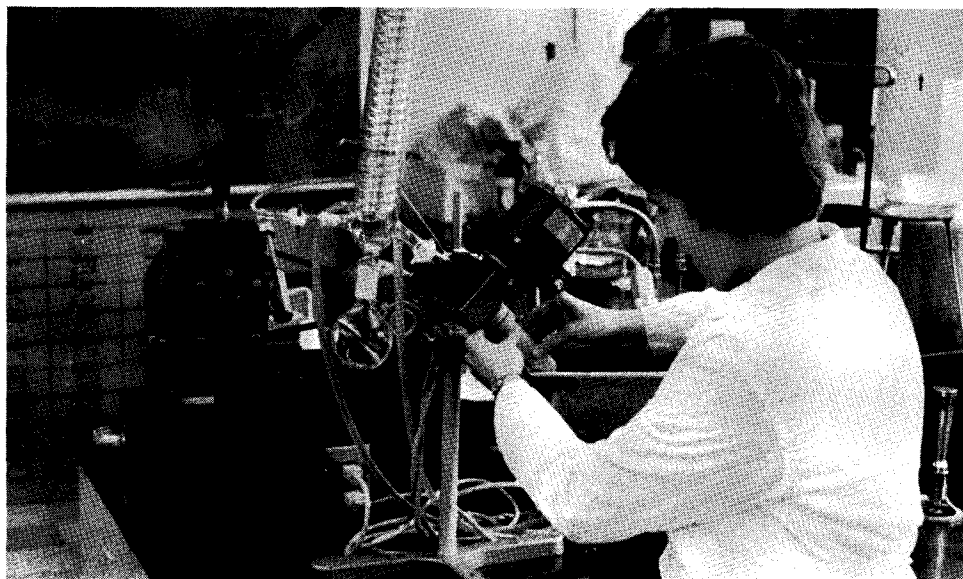
Students who are registered at the University of Dayton are eligible for the degree of Bachelor of Science in Medical Technology.

Examinations for Registration and the Certificate of M.T. (Medical Technologist) are given in July and November by the Registry of Medical Technologists in various cities. These are written examinations.



**PROGRAM—S8: BACHELOR OF SCIENCE WITH A MAJOR IN
MEDICAL TECHNOLOGY**

<i>Dept.</i>	<i>No.</i>	<i>Course</i>	<i>1st Term¹</i>	<i>2nd Term</i>	<i>3rd Term</i>
<i>Freshman Year</i>					
BIO	101	General Biology		3-3-4	
CHM	123-4	General Chemistry	3-3-4	3-3-4	
ENG	101-6	Freshman English	3-0-3	3-0-3	
EDP	130-131	Physical Education	0-2-1	0-2-1	
MTH ²	112	Intro. Math Analysis	3-0-3		
— ³	—	Study of Man elective	3-0-3	3-0-3	
— ⁴	—	Humanities elective	3-0-3	3-0-3	
ORI	100	Arts & Science Orientation	1-0-0		
			17	18	
<i>Sophomore Year</i>					
BIO	102	General Biology	3-3-4		
BIO	340	Cellular Biology		3-0-3	
CHM	313-4	Organic Chemistry	3-3-4	3-3-4	
CHM	201	Quantitative Analysis	2-4-4		
ENG	—	Sophomore English	3-0-3		
— ⁵	—	Study of Man elective		3-0-3	
BIO	209	Comparative Anatomy		2-4-4	
EDP	140	Personal and Community Health	2-0-2		
			17	15	
<i>Junior Year</i>					
BIO	312	General Genetics	3-0-3		
BIO	411	Bacteriology	3-4-5		
— ⁶	—	Humanities Elective	3-0-3	3-0-3	
—	—	Modern Language	3-0-3	3-0-3	
— ⁷	—	Study of Man elective		3-0-3	
BIO	325	Parasitology	2-3-3		
— ⁸	—	Science elective		6-8-8	
			17	17	



PROGRAM—S8—Continued

<i>Dept.</i>	<i>No.</i>	<i>Course</i>	<i>1st Term</i> ¹	<i>2nd Term</i>	<i>3rd Term</i>
<i>Senior Year</i> ⁹					
MET	481	Introduction to Medical Technology	—4		
MET	482	Urinalysis and Renal Function		—4	
MET	483	Hematology	—6		
MET	484	Bacteriology, Parasitology, Mycology		—7	
MET	485	Chemistry and Gastric Analysis		—8	
MET	486	Histology and Cytology	—3		
MET	487	Serology and Spinal Fluids	—3		
MET	488	Blood Banking	—3		
MET	489	Laboratory Management		—0	
MET	490	Normal and Pathologic Physiology	—0		
			19	19	

¹Under "Term," 3-0-3 means 3 hrs. class, 0 hrs. laboratory, and 3 hrs. credit.

²May substitute depending on background and score on placement test.

³Phl 106 or Thl 112.

⁴Spe 101 and Psy, Soc, Eco, Hst. etc.

⁵Phl 206 or Thl elective.

⁶Thl electives 6 cr. hrs., non-Catholics take humanities electives.

⁷Spe. 101.

⁸Other Bio, Chm, Mth., etc., as needed.

⁹Of the 38 credits in the senior year, 24 must be completed before graduation. The remaining 14 are necessary to complete the program of the Hospital School of Medical Technology.

THE BACHELOR OF SCIENCE IN PHYSICAL SCIENCE

The Department of Physics is inaugurating a new program leading to the degree of Bachelor of Science in Physical Science. There are two basic motivations for the inauguration of such a course on the part of the Department. The first one has to do with the development of a program in physical science which is less specialized and will allow more students to better relate the physical sciences to other parts of our culture. The second goal of this program is to encourage the development of people with a sound training in the physical sciences who will be able to communicate their knowledge to the new generation of students, primarily in our secondary schools.

The program, as outlined below, calls for 24-28 hours of college physics, 20-24 hours of chemistry and 21 hours of mathematics. In addition, there are sufficient hours to allow for an extremely strong minor of the students choice and enough time in the four year program to complete all necessary education requirements as outlined by our own School of Education for secondary school teachers. Students interested in this latter option should consult the E-11 program in the School of Education which is described elsewhere in the catalog.

PROGRAM—S9: BACHELOR OF SCIENCE WITH A MAJOR IN PHYSICAL SCIENCE

<i>Dept.</i>	<i>No.</i>	<i>Course</i>	<i>1st Term¹</i>	<i>2nd Term</i>	<i>3rd Term</i>
<i>Freshman Year</i>					
AAS	100	Orientation	1-0-0		
CHM	123-4	General Chemistry	3-3-4	3-3-4	
ENG	101-6	Freshman English	3-0-3	3-0-3	
MTH	101	Pre-Calculus Math	4-0-4		
MTH	118	Analytical Geometry & Calculus I		4-0-4	
PHL	106	Basic Problems in Philosophy I	3-0-3		
THL	112	Foundations in Theology	3-0-3		
SPE	101	Fundamentals of Effective Speaking		3-0-3	
—	—	Elective ²		3-0-3	
			17	17	

PROGRAM—S9—Continued

<i>Dept.</i>	<i>No.</i>	<i>Course</i>	<i>1st Term</i> ¹	<i>2nd Term</i>	<i>3rd Term</i>
<i>Sophomore Year</i>					
CPS	147	PI/I Computer Programming	2-0-2		
CHM	201	Quantitative Analysis		2-4-4	
MTH	119-228	Analytical Geometry & Calculus II, III	4-0-4	4-0-4	
PHY	196-207	General Physics, I, II	3-1½-3	3-1½-3	
PHY	196L-207L	General Physics Lab I, II	0-3-1	0-3-1	
THL	—	Theology elective	3-0-3		
—	—	Elective ³	3-0-3	3-0-3	
			16	15	
<i>Junior Year</i>					
CHM	313-302	Organic & Physical Chemistry	3-3-4	3-0-3	
MTH	219	Applied Differential Equations	3-0-3		
PHL	206	Basic Problems in Philosophy II	3-0-3		
PHY	208	General Physics III	3-0-3		
PHY	208L	General Physics III Lab	0-3-1		
PHY	451	Intermediate Physics I		3-3-4	
PHY	452	Intermediate Physics II		3-3-4	
—	—	Minor	3-0-3	3-0-3	
THL	—	Upper Level Theology		3-0-3	
			17	17	
<i>Senior Year</i>					
PHY	453	Intermediate Physics III	3-3-4		
—	—	Minor	3-0-3	3-0-3	
THL	—	Upper Level Theology	3-0-3		
—	—	Elective ³	2-0-2	12-0-12	
—	—	Physical Science Elective ⁴	3-3-4		
			16	15	

¹Under "Term," 3-0-3 means 3 hours class, 0 hours lab or recitation and 3 hours credit.

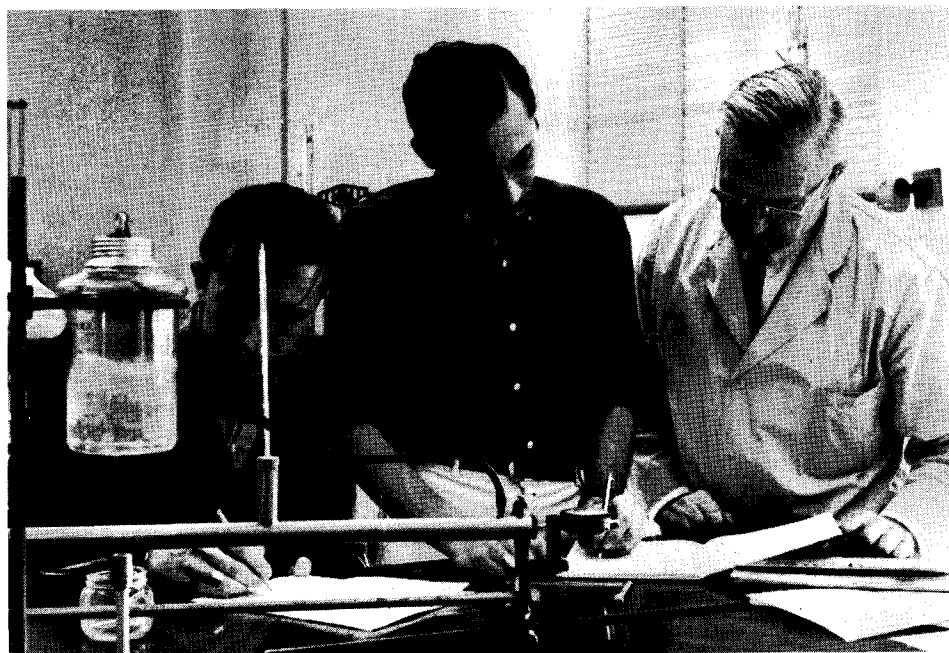
²This elective is to be used to meet any prerequisites necessary for the minor field; consult with department chairmen.

³Electives can be used to complete teacher certification.

⁴Upper level physics or chemistry course.

PROGRAM—S10: BACHELOR OF SCIENCE WITH A MAJOR IN PHYSICS

<i>Dept.</i>	<i>No.</i>	<i>Course</i>	<i>1st Term¹</i>	<i>2nd Term</i>	<i>3rd Term</i>
<i>Freshman Year</i>					
AAS	100	Orientation	1-0-0		
CHM	123-4	General Chemistry	3-3-4	3-3-4 ¹	
CPS	147	PL I Programming ²		2-0-2	
ENG	101-6	Freshman English	3-0-3	3-0-3	
MTH	128-9	Analytic Geometry & Calculus I & II	4-0-4	4-0-4	
PHY	196	General Physics		3-1½-3	
PHY	196L	General Physics Lab I		0-3-1	
THL	112	Foundations in Theology	3-0-3		
			14	17	
<i>Sophomore Year</i>					
—	—	Modern Language	3-0-3	3-0-3	
MTH	228	Analytic Geometry and Calculus III	4-0-4		
MTH	229	Differential Equations		3-0-3	
PHL	106	Basic Problems in Philosophy I	3-0-3		
PHL	206	Basic Problems in Philosophy II		3-0-3	
PHY	207-8	General Physics II and III	3-1½-3	3-0-3	
PHY	207L-8L	General Physics Lab II and III	0-3-1	0-3-1	
THL ³	—	Theology elective	3-0-3		
—	—	Open elective		3-0-3	
			17	16	



PROGRAM—S10—Continued

<i>Dept.</i>	<i>No.</i>	<i>Course</i>	<i>1st Term</i> ¹	<i>2nd Term</i>	<i>3rd Term</i>
<i>Junior Year</i>					
PHY	301	Thermodynamics	3-0-3		
PHY	303	Intermediate Mechanics I	3-0-3		
PHY	390	Introduction to Quantum Mechanics		3-0-3	
PHY	430-1	Advanced Lab I and II	0-4-2	0-4-2	
PHY	460	Seminar	2-0-1	2-0-1	
SPE	101	Fundamentals of Effective Speaking		3-0-3	
THL ³	—	Theology elective	3-0-3		
—	—	Minor ⁴	3-0-3	3-0-3	
—	—	Open elective ⁵	3-0-3	3-0-3	
			18	15	
<i>Senior Year</i>					
PHY	421	Nuclear Physics	3-0-3		
PHY	408	Intermediate Electricity & Magnetism I	3-0-3		
PHY	432-3	Advanced Laboratory III and IV	0-4-2	0-4-2	
PHY	460	Seminar	2-0-1	2-0-1	
THL ³	—	Theology elective	3-0-3		
—	—	Open elective	3-0-3	9-0-9	
—	—	Minor ⁴	3-0-3	3-0-3	
			18	15	

¹Under "Term," 3-0-3 means 3 hours class, 0 hours lab or recitation and 3 hours credit.

²This course can be waived for students who already have comparable programming experience.

³Non-Catholic students take an elective.

⁴Upper level courses in physics, math or other approved subjects, see page 292.

⁵Students planning graduate work in physics, astronomy or other applied science areas consult page 292.

PREMEDICAL AND PREDENTAL

This program meets the admission requirements of all approved medical and dental schools. A four year course leading to a Bachelor degree is strongly recommended. In addition to the basic sciences, it should include an adequate study of the humanities, social science and foreign language. Students contemplating a career in medicine should realize that preference is given to candidates who have the most complete education, as well as good scholastic standing.

A Premedical Faculty Committee is responsible for curriculum requirements, program changes, course advising and general counseling. Current members of this committee are: Dr. B. Lawrence Fox; Dr. Carl I. Michaelis; Prof. James M. Ramsey; Dr. Charles J. Chantell, *Chairman*. Upon admission to this program each student will be assigned a permanent faculty advisor.

A premedical recommendation board exists and is charged with making joint recommendations for students who apply for admission to medical and dental schools. In addition to considering academic standing these recommendations also weigh the applicant's character and personality qualities. Dr. Carl I. Michaelis is Chairman of the recommendation board.

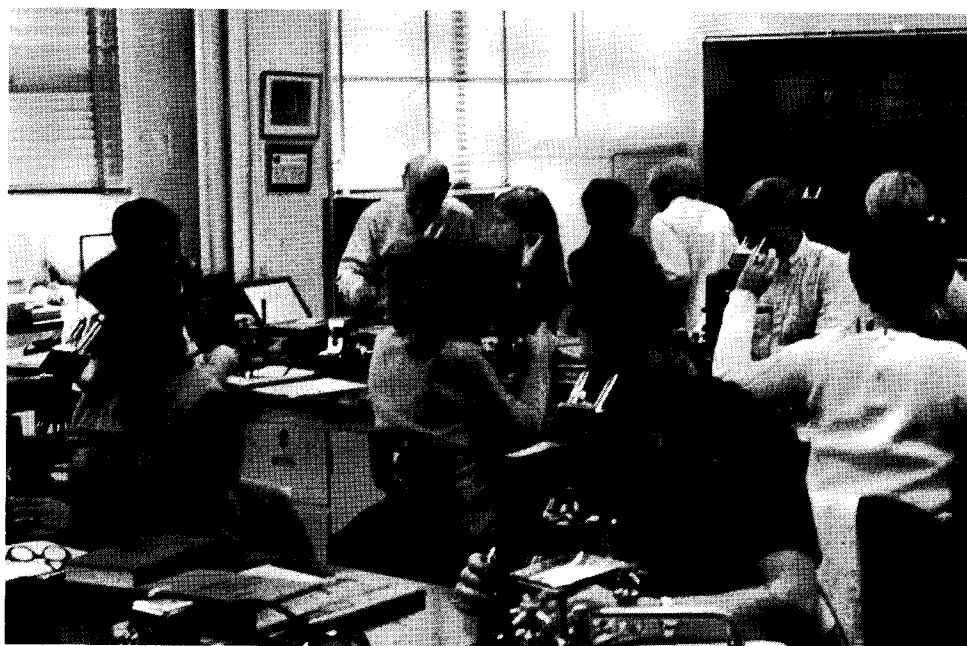
A chapter of the National Premedical Honor Society, Alpha Epsilon Delta, is established on campus. All premedical and predental students should attend the chapter meetings and are urged to join this society.

Both the Medical College Test and the Dental Aptitude Testing Program are administered on this campus each year in the spring and fall. All prospective medical and dental school applicants must take these tests, usually in the spring of their junior year. Information regarding these tests can be obtained from the premedical advisors.

The increasingly high admission standard for medical and dental schools make it imperative that the premedical and predental student give full time to study. The undergraduate cumulative grade-point average is an important criterion in gaining admission to a professional school. The minimum acceptable cumulative average for most medical schools is 3.00, for most dental schools 2.8. For this reason, the Premedical Faculty Committee conducts a sophomore evaluation on all students enrolled in Program S11. Any student whose cumulative average after 2 years is below 2.7 will be directed to change his major.

**PROGRAM—S11: BACHELOR OF SCIENCE FOR PREMEDICAL
AND PRENATAL STUDENTS**

<i>Dept.</i>	<i>No.</i>	<i>Course</i>	<i>1st Term¹</i>	<i>2nd Term</i>	<i>3rd Term</i>
<i>Freshman Year</i>					
BIO	101	General Biology		3-3-4	
CHM	123-4	General Chemistry	3-3-4	3-3-4	
ENG	101-6	English	3-0-3	3-0-3	
EDP ²	130-131	Physical Education	0-2-1	0-2-1	
MTH ³	112-3	Int. Math. Anal.	3-0-3	3-0-3	
— ⁴	—	Study of Man	3-0-3	3-0-3	
ORI	100	Arts and Sciences Orientation	1-0-0		
			14	18	
<i>Sophomore Year</i>					
BIO	102	General Biology	3-3-4		
BIO	340	Cellular Biology		3-0-3	
ENG	—	Sophomore English elective	3-0-3		
EDP ⁵	140	Personal and Community Health	2-0-2		
— ⁶	—	Study of Man elective		6-0-6	
CHM	313-4	Organic Chemistry	3-3-4	3-3-4	
GER	—	German	3-0-3	3-0-3	
			16	16	



PROGRAM—S11—Continued

<i>Dept.</i>	<i>No.</i>	<i>Course</i>	<i>1st Term</i> ¹	<i>2nd Term</i>	<i>3rd Term</i>
<i>Junior Year</i>					
BIO	312	General Genetics	3-0-3		
—	—	Science elective		3-4-4	
PHY	201-2	General Physics	3-2-4	3-2-4	
— ⁷	—	Study of Man elective	6-0-6	3-0-3	
— ⁸	—	Humanities elective	3-0-3	3-0-3	
CHM	201	Quantitative Analysis		2-4-4	
			16	18	
<i>Senior Year</i>					
THL ¹¹	—	Theology electives	3-0-3	3-0-3	
— ⁹	—	Science electives	3-3-4	3-4-4	
— ¹⁰	—	General elective	3-0-3	6-0-6	
—	—	Humanities electives	6-0-6	3-0-3	
			16	16	

¹Under "Term," 3-0-3 means 3 hrs. class, 0 hrs. laboratory, and 3 hrs. credit.

²Women only.

³May substitute depending on background and score on placement test.

⁴Phl 106 or Thl 112.

⁵Women only.

⁶Phl 206, Psy, Soc, Pol, Eco, the elective, etc.

⁷Eco, Hst, Psy, Soc, Pol, Phl, Thl, etc.

⁸Eng, Hst, Pol, etc.

⁹Bio, Chm, Phy, Mth as needed to meet specific admission requirements for professional school.

¹⁰Must include Spe 101 if not taken earlier.

¹¹Non-Catholics may take electives in place of theology.

**PROGRAM—S12: BACHELOR OF SCIENCE WITH A MAJOR IN
PSYCHOLOGY BIOLOGICAL EMPHASIS**

<i>Dept.</i>	<i>No.</i>	<i>Course</i>	<i>1st Term¹</i>	<i>2nd Term</i>	<i>3rd Term</i>
<i>Freshman Year</i>					
AAS	100	Orientation	1-0-0		
BIO	101	General Biology		3-3-4	
CHM	123-4	General Chemistry	3-3-4	3-3-4	
ENG	101-6	Freshman English	3-0-3	3-0-3	
EDP ²	130-1	Physical Education	1-2-1	1-2-1	
MTH ⁴	112-113	Intro. Mathematical Analysis	3-0-3	3-0-3	
PHL	106	Basic Problems in Philosophy I	3-0-3		
THL ³	112	Foundations in Theology		3-0-3	
			14	18	
<i>Sophomore Year</i>					
BIO	102	General Biology	3-3-4		
PSY	201	Introductory Psychology	3-0-3		
CHM	313-4	Organic Chemistry	3-3-4	3-3-4	
EDP ²	140	Personal and Community Health	2-0-2		
PHL	206	Basic Problems in Philosophy II		3-0-3	
ENG	—	Sophomore English		3-0-3	
PSY	—	Psychology elective		3-0-3	
SPE	101	Fundamentals of Effective Speaking		3-0-3	
THL ³	—	Theology elective	3-0-3		
			16	16	





PROGRAM—S12—Continued

<i>Dept.</i>	<i>No.</i>	<i>Course</i>	<i>1st Term¹</i>	<i>2nd Term</i>	<i>3rd Term</i>
<i>Junior Year</i>					
BIO	—	Biology elective		3-3-4	
PHY	201-2	General Physics	3-2-4	3-2-4	
—	—	General elective		3-0-3	
PSY	—	Psychology elective	3-0-3	3-0-3	
PSY	302	Elementary Statistics	3-0-3		
— ⁵	—	Modern Language	3-0-3	3-0-3	
THL ³	—	Theology elective	3-0-3		
			16	17	
<i>Senior Year</i>					
BIO	—	Biology elective	3-3-4		
PSY	308	Experimental Psychology		3-2-4	
—	—	General elective	3-0-3	6-0-6	
THL ³	—	Theology elective	3-0-3		
PSY	—	Psychology elective	6-0-6	6-0-6	
			16	16	

¹Under "Term" 3-0-3 means 3 hrs. class, 0 hrs. laboratory, and 3 hrs. credit.

²Women only.

³Non-Catholic students take an elective.

⁴May substitute Mth 101 for Mth 112 and Mth 112 for 113.

⁵French, German or Russian preferred.

PROGRAM—S13: BACHELOR OF SCIENCE WITH A MAJOR IN PSYCHOLOGY

Dept.	No.	Course	1st Term ¹	2nd Term	3rd Term
<i>Freshman Year</i>					
AAS	100	Orientation	1-0-0		
Bio	101	General Biology		3-3-4	
CHM	123-4	General Chemistry	3-3-4	3-3-4	
ENG	101-6	Freshman English	3-0-3	3-0-3	
EdP ²	130-1	Physical Education	1-2-1	1-2-1	
MTH ⁴	112-113	Intro. Mathematical Analysis	3-0-3	3-0-3	
PHL	106	Basic Problems in Philosophy I	3-0-3		
THL ³	112	Foundations in Theology		3-0-3	
			14	18	
<i>Sophomore Year</i>					
PSY	201	Introductory Psychology	3-0-3		
— ⁵	—	Modern Language	3-0-3	3-0-3	
EdP ²	140	Personal and Community Health		2-0-2	
PHL	206	Basic Problems in Philosophy II	3-0-3		
PHY	201-2	General Physics	3-2-4	3-2-4	
PSY	302	Elementary Statistics		3-0-3	
—	—	General elective		3-0-3	
THL ³	—	Theology elective		3-0-3	
Bio	102	General Biology II	3-3-4		
			17	18	
<i>Junior Year</i>					
PSY	—	Psychology elective	3-0-3	6-0-6	
PSY	308	Experimental Psychology		3-2-4	
SPE	101	Fundamentals of Effective Speaking	3-0-3		
—	—	General elective	6-0-6	6-0-6	
THL ³	—	Theology elective	3-0-3		
			15	16	
<i>Senior Year</i>					
PSY	—	Psychology elective	6-0-6	6-0-6	
—	—	General elective	9-0-9	6-0-6	
THL ³	—	Theology elective		3-0-3	
			15	15	

¹Under "Term" 3-0-3 means 3 hrs. class, 0 hrs. laboratory, and 3 hrs. credit.

²Women only.

³Non-Catholic students take an elective.

⁴May substitute Mth 101 for Mth 112 and Mth 112 for 113.

⁵French, German or Russian preferred.

**PROGRAM—S14: BACHELOR OF SCIENCE WITH A MAJOR IN
SOCIAL WORK (129 Credit Hours)**

<i>Dept.</i>	<i>No.</i>	<i>Course</i>	<i>1st Term¹</i>	<i>2nd Term</i>	<i>3rd Term</i>
<i>Freshman Year</i>					
ORI	100	Arts and Sciences Orientation	1-0-0		
ENG	101-6	Freshman English	3-0-3	3-0-3	
EDP ²	130-1	Physical Education	1-1-1	1-1-1	
SPE	101	Fundamentals of Effective Speaking		3-0-3	
PHL	106	Basic Problems of Philosophy I	3-0-3		
THL ³	112	Foundations in Theology		3-0-3	
PSY	201	Introductory Psychology	3-0-3		
SOC	205	Principles of Sociology	3-0-3		
POL	201	American National Government		3-0-3	
—	—	Science Course	3-2-4	3-2-4	
			17	17	
<i>Sophomore Year</i>					
ENG	—	Sophomore English	3-0-3	3-0-3	
EDP ²	140	Personal and Community Health	2-0-2		
PHL	206	Basic Problems of Philosophy II		3-0-3	
THL ³	—	Theology elective	3-0-3		
Eco	201-2	Principles of Economics I and II	3-0-3	3-0-3	
ANT	320	Introduction to Cultural Anthropology		3-0-3	
POL	303	State and Local Government	3-0-3		
Soc ⁴	—	Sociology or Anthropology electives	3-0-3	3-0-3	
			17	15	



PROGRAM—S14—Continued

<i>Dept.</i>	<i>No.</i>	<i>Course</i>	<i>1st Term¹</i>	<i>2nd Term</i>	<i>3rd Term</i>
<i>Junior Year</i>					
THL ³	—	Theology elective		3-0-3	
HST	—	History electives	3-0-3	3-0-3	
PSY	—	Psychology electives	3-0-3	3-0-3	
Soc	401-2	Social Research Methods and Statistics	3-0-3	3-0-3	
Soc ⁴	—	Sociology or Anthropology electives	6-0-6	6-0-6	
			15	18	
<i>Senior Year</i>					
THL ³	—	Theology elective	3-0-3		
PSY	—	Psychology electives	3-0-3	3-0-3	
S.W.	305	Introduction to Social Work	3-0-3		
S.W.	306	Casework	3-0-3		
S.W.	418	Community Organization		3-0-3	
S.W.	424	Group Work		3-0-3	
S.W.	432	Social Work Field Experience		3-0-3	
— ⁵	—	General electives	3-0-3	3-0-3	
			15	15	

¹Under "Term" 3-0-3 means 3 hrs. class, 0 hrs. laboratory, and 3 hrs. credit.

²Applies to women only.

³Non-Catholic students take an elective.

⁴Must be chosen from the following courses:

Soc 204	Modern Social Problems	3 credit hours
Soc 301	Marriage and the Family	3 credit hours
Soc 307	Criminology and Penology	3 credit hours
Soc 313	Juvenile Delinquency	3 credit hours
Soc 318	Social Stratification	3 credit hours
Ant 322	Culture and Personality	3 credit hours
Soc 325	American Ethnic and Racial Minorities	3 credit hours
Soc or Ant 406	Social Change	3 credit hours
Soc 426	Urban Sociology	3 credit hours
Soc 435W	Human Relations Workshop	6 credit hours

⁵May not be taken in the Department of Sociology, Anthropology, and Social Work.



