

VI College of Arts and Sciences

DR. LEONARD A. MANN, S.M., *Dean*

REV. RALPH GORG, S.M., *Assistant Dean*

MR. RICHARD PETERSON, *Assistant Dean*

MISS ANN FRANKLIN, *Assistant to the Dean*

Consistent with the goals of the University, the College of Arts and Sciences not only strives to prepare the student for the practical task of making a respectable living, but recognizes that there are other benefits that should come to him. Among these are habits of clear thinking and critical reasoning, a recognition of the role of each person in his society and his responsibility for his fellow man, and an appreciation of the aesthetic and cultural values in life, and a desire for continuing growth in the pursuit of truth.

Ideally, the student is best served when he is equipped with knowledge deep enough to pursue graduate studies in a given discipline, understands and loves his fellow man, and confronts issues and questions that arise in every walk of life with a careful analysis based on unchanging principles that ultimately lead him to his final destiny. The educated man never stops developing his powers, and has a beneficial impact on all those with whom he comes in contact. The development of such a person is the goal of the College of Arts and Sciences.

To achieve these ends, the disciplines of Theology and Philosophy are included in every program, since they are most directly concerned with ultimates and basic principles. In addition to these, foreign language, the humanities, and the social and physical sciences complete the requirements that provide the base for this formation.

The non-academic aspects of the student's development are served best through the many organizations open to all students, such as the social and professional clubs and societies, the performing arts, student government, the campus publications, participation in the guest artist and lecture series, and the spiritual retreats and the campus religious activities.

DEGREE REQUIREMENTS

For the Bachelor of Arts or Bachelor of Science degree, it is necessary to complete all the courses listed in one of the programs on the following pages. This will constitute a major field and usually a minor field. The total number of credit hours will vary from one program to another; the required number can be determined from the program in which the student is enrolled.

In most of the programs some courses are listed as electives. These courses are electives, not in the sense that they may be taken or not taken, but in that the student may elect any course that is offered for which he has prerequisites. They constitute an important part of his program, and permit some latitude in achieving the goals he has set for himself. It is always advisable to select these courses in consultation with the faculty adviser.

In the programs leading to the Bachelor of Arts degree, it is required that two years of foreign language be taken. This refers to a single language.

Students who continue with the language studied in high school for two or more years, elect 201; all others elect 101.

The major field normally constitutes twenty-four hours of upper level courses, and the minor field, twelve. Under unusual circumstances, it is possible to modify this requirement by the substitution of courses from other departments if they serve the specific interests of the student in his pursuit of his major field. This can be done only with the permission of the chairman; however, it is not permitted to take less than eighteen hours in a major field under any circumstances.

POSSIBLE MAJORS

For the Bachelor of Arts degree the possible majors are: communication arts, economics, English, fine arts, geology, history, languages, mathematics, music, philosophy, political science, psychology, sociology, anthropology, or social work, and theological studies.

For the Bachelor of Science degree the possible majors are: biology, chemistry, computer science, geology, mathematics, home economics (the general program or the dietetics program), medical technology, physics, and psychology.

Other programs lead to the Bachelor of Social Science with specialization in Police Administration, the Bachelor of Fine Arts, and the Bachelor of Music degrees.

If a minor is required, it must be selected from one of the above fields. There is an exception in Home Economics where Marketing is permitted as a minor.

ACADEMIC STANDING

As a requirement for graduation, it is necessary that the grade point average be at least 2.00 in the major field, in the minor field, and in the total college work.

PRE-PROFESSIONAL COURSES

The schedule should be drawn up with a view to preparation for a particular profession which the student may have in mind. Hence it is imperative that the student consult the dean to receive the proper educational guidance.

Students interested in librarianship or archival work will need a strong major and minor, a reading knowledge of German and French, and an interest in a variety of subjects. Technically, a law school will accept any college degree with the proper cumulative point average.

For public administration and civil service, a major in a social science is desirable. This is equally true for foreign service, and here a strong aptitude in modern language is also a strong aid.

Although vocational education is not the primary objective of the Arts, they are practical because the best "job-insurance" is not a narrow training in specific skills but a broad training in general capabilities. Graduates with the B.A., for example, are now accepted in graduate schools in M.B.A. programs.

Two years of college study are required for admission to the first year of philosophy in diocesan seminaries. During these years stress should be placed upon English, the classical and modern languages.

Students contemplating the medical profession should consult the pre-medical program (Program-S11: pp. 94-95) adviser. Those interested in pharmacy, dentistry and similar programs also consult the pre-medical adviser.

TEACHER EDUCATION PROGRAM

Students planning to teach in secondary schools may elect a program of studies with a major in any academic discipline within the College of Arts and Sciences, and include sufficient courses from the School of Education, including student teaching, to qualify them for certification. For details of this program, see the School of Education section of this Bulletin. This would yield the B.A. or the B.S. degree in the discipline, in addition to the teaching certificate.

GENERAL REQUIREMENTS FOR BACHELOR OF ARTS DEGREES

<i>Dept.</i>	<i>No.</i>	<i>Course</i>	<i>1st Term¹</i>	<i>2nd Term</i>	<i>3rd Term</i>
<i>Freshman Year</i>					
ENG	101-6	Freshman English	3-0-3	3-0-3	
HST ²	—	History electives	3-0-3	3-0-3	
MIL ³	101-2	First Year Basic Course	2-1-1	2-1-1	
PHL	106	Problems in Philosophy	3-0-3		
SPE ⁴	101	Fundamentals of Effective Speaking			
THL ⁵	152	Intro. to Sacred Scripture		3-0-3	
— ⁶	—	Foreign Language course	3-0-3	3-0-3	
—	—	Science course	3-3-4	3-3-4	
			17	17	
<i>Sophomore Year</i>					
ENG	—	Sophomore English	3-0-3	3-0-3	
HST ²	—	American History electives	3-0-3	3-0-3	
MIL	201-2	Second Year Basic Course	2-1-1	2-1-1	
PHL	206	Problems in Philosophy II	3-0-3		
PSY	201	Introduction to Psychology	3-0-3		
Soc ⁷	203	General Sociology		3-0-3	
THL ⁵	220	Theology of Christ		3-0-3	
—	—	Foreign Language course	3-0-3	3-0-3	
			16	16	

Junior and Senior Years

See specific programs on the following pages.

¹Under "Term," 3-0-3 means 3 hrs. class, 0 hrs. laboratory, and 3 hrs. credit.²Freshmen elect 6 hours from Hst 120, 125, 130, 135. Sophomores elect 6 hours from Hst 251, 252, 260, 265, 270, 275.³Women take EdP 130-1; men not taking R.O.T.C. take EdP 101-2.⁴This course is fitted into the different programs at different times.⁵Non-Catholic students take an elective, or Spe 101.⁶Freshmen who continue a language studied in high school for 2 or more years must have taken CEEB Achievement and Supplementary Achievement Tests in that language in order to qualify for exemption from further language study. Exempted freshmen may take 307 as elective. Freshmen not exempted will be placed at the proper level. Freshmen who begin a new language take 101. Transfer students consult department chairman.⁷Some programs do not require Sociology.

PROGRAM—A1: BACHELOR OF ARTS WITH A MAJOR IN
COMMUNICATION ARTS

<i>Dept.</i>	<i>No.</i>	<i>Course</i>	<i>1st Term</i> ¹	<i>2nd Term</i>	<i>3rd Term</i>
<i>Freshman Year</i>					
ENG	101-6	Freshman English	3-0-3	3-0-3	
HST ²	—	History electives	3-0-3	3-0-3	
MIL ³	101-2	First Year Basic Course	2-1-1	2-1-1	
PHL	106	Problems in Philosophy I	3-0-3		
PHL	206	Problems in Philosophy II			3-0-3
SPE	101	Fundamentals of Effective Speaking			3-0-3
THL ⁴	152	Intro. to Sacred Scripture		3-0-3	
— ⁵	—	Modern Language course	3-0-3	3-0-3	
—	—	Science course	3-3-4	3-3-4	
			17	17	6
<i>Sophomore Year</i>					
ENG	—	Sophomore English electives	3-0-3	3-0-3	
HST ²	—	American History electives	3-0-3	3-0-3	
MIL ⁵	201-2	Second Year Basic Course	2-1-1	2-1-1	
PSY	201	Introductory Psychology	3-0-3		
SOC	203	General Sociology	3-0-3		
THL ⁴	220	Theology of Christ		3-0-3	
—	—	Appropriate Spe-Jrn course		3-0-3	
— ⁶	—	Modern Language course	3-0-3	3-0-3	
			16	16	
<i>Junior Year</i>					
PHL	—	Philosophy elective	3-0-3		
PHL	—	Philosophy elective		3-0-3	
THL ⁴	—	Theology elective	2-0-2	2-0-2	
—	—	General elective		3-0-3	
—	—	Major	6-0-6	6-0-6	
—	—	Minor	3-0-3	3-0-3	
			14	17	
<i>Senior Year</i>					
—	—	Elective		3-0-3	
—	—	Elective	3-0-3		
SPE	430	Seminar in Communication Arts		3-0-3	
THL ⁴	—	Theology elective	2-0-2		
—	—	Major	6-0-6	6-0-6	
—	—	Minor	3-0-3	3-0-3	
			14	15	

¹Under "Term," 3-0-3 means 3 hrs. class, 0 hrs. laboratory, and 3 hrs. credit.²See footnote 2, p. 59.³Women take EdP 110-1; men not taking R.O.T.C. take EdP 101-2.⁴Non-Catholic students take an elective.⁵Women take EdP 112-3; men not taking R.O.T.C. take EdP 201-2.⁶See footnote 6 on page 61.

PROGRAM—A2: BACHELOR OF ARTS WITH A MAJOR IN ECONOMICS

<i>Dept.</i>	<i>No.</i>	<i>Course</i>	<i>1st Term</i> ¹	<i>2nd Term</i>	<i>3rd Term</i>
<i>Freshman Year</i>					
ENG	101-6	Freshman English	3-0-3	3-0-3	
HST ²	—	History electives	3-0-3	3-0-3	
MIL ³	101-2	First Year Basic Course	2-1-1	2-1-1	
PHL	106	Problems in Philosophy I	3-0-3		
THL ⁴	152	Intro. to Sacred Scripture		3-0-3	
— ⁵	—	Modern Language course	3-0-3	3-0-3	
—	—	Science course	3-2-4	3-2-4	
			17	17	
<i>Sophomore Year</i>					
ECO	201-2	Principles of Economics	3-0-3	3-0-3	
ENG	—	Sophomore English	3-0-3	3-0-3	
HST ²	—	American History electives	3-0-3	3-0-3	
MIL ³	201-2	Second Year Basic Course	2-1-1	2-1-1	
PHL	206	Problems in Philosophy II	3-0-3		
THL ⁴	220	Theology of Christ		3-0-3	
— ⁵	—	Modern Language course	3-0-3	3-0-3	
			16	16	
<i>Junior Year</i>					
MTH	101	College Algebra	3-0-3		
ECO	340	Micro Economic Analysis	3-0-3		
ECO	341	Macro Economic Analysis		3-0-3	
ECO	342	Money, Banking, and Monetary Policy		3-0-3	
PHL	—	Philosophy elective	3-0-3		
PSY	201	Introductory Psychology		3-0-3	
THL ⁴	—	Theology elective	2-0-2	2-0-2	
—	—	Economics elective	3-0-3		
—	—	Minor		3-0-3	
SPE	101	Fundamentals of Effective Speaking	3-0-3		
			17	14	
<i>Senior Year</i>					
PHL	—	Philosophy elective		3-0-3	
THL ⁴	—	Theology elective	2-0-2		
—	—	Economics elective	6-0-6	6-0-6	
—	—	General elective		3-0-3	
—	—	Minor	6-0-6	3-0-3	
			14	15	

¹Under "Term," 3-0-3 means 3 hrs. class, 0 hrs. laboratory, and 3 hrs. credit.²See footnote 2, p. 59.³Women take EdP 130-1; men not taking R.O.T.C. take EdP 101-2.⁴Non-Catholic students may take an elective.⁵Women take EdP 140; men not taking R.O.T.C. take EdP 201-2.⁶See footnote 6 on page 61.

PROGRAM—A3: BACHELOR OF ARTS WITH A MAJOR IN ENGLISH

<i>Dept.</i>	<i>No.</i>	<i>Course</i>	<i>1st Term¹</i>	<i>2nd Term</i>	<i>3rd Term</i>
<i>Freshman Year</i>					
ENG ²	101-6	Freshman English	3-0-3	3-0-3	
HST ³	—	History electives	3-0-3	3-0-3	
MIL ⁴	101-2	First Year Basic Course	2-1-1	2-1-1	
PHL	106	Problems in Philosophy I	3-0-3		
THL ⁵	—	Freshman Theology		3-0-3	
— ⁶	—	Modern Language course	3-0-3	3-0-3	
—	—	Science course	3-3-4	3-3-4	
			17	17	
<i>Sophomore Year</i>					
ENG ⁷	2—	Sophomore electives	3-0-3	3-0-3	
HST ⁸	—	American History electives	3-0-3	3-0-3	
MIL ⁸	201-2	Second Year Basic Course	2-1-1	2-1-1	
PHL	206	Problems in Philosophy II	3-0-3		
PSY	201	Introductory Psychology	3-0-3		
SPE	101	Fundamentals of Effective Speaking		3-0-3	
THL ⁵	220	Theology of Christ		3-0-3	
—	—	Modern Language elective	3-0-3	3-0-3	
			16	16	
<i>Junior Year</i>					
ENG ⁹	—	Author course	3-0-3		
ENG ¹⁰	—	Advanced course	3-0-3		
ENG ¹¹	—	Early period survey		3-0-3	
ENG ¹²	—	Later period survey		3-0-3	
SOC	203	Introduction to Sociology	3-0-3		
PHL	—	Philosophy elective		3-0-3	
THL ⁵	—	Theology elective	2-0-2	1-0-1	
—	—	General elective	3-0-3	3-0-3	
—	—	Minor	3-0-3	3-0-3	
			17	16	
<i>Senior Year</i>					
ENG ¹³	490	Seminar		3-0-3	
ENG ¹⁴	—	Advanced American literature	3-0-3		
ENG	—	English elective		3-0-3	
ENG ¹⁵	—	Shakespeare	3-0-3		
PHL	—	Philosophy elective	3-0-3		
THL ⁵	—	Theology elective	2-0-2	1-0-1	
—	—	General elective	3-0-3	3-0-3	
—	—	Minor	3-0-3	3-0-3	
			17	13	

¹Under "Term," 3-0-3 means 3 hrs. class, 0 hrs. laboratory, and 3 hrs. credit.²Freshmen who complete Eng 103 with a grade of C or better take a 200 level course in the second term.³Freshmen elect 6 hrs. from Hst 120, 125, 130, 135. Sophomores elect 6 hrs. from Hst 260, 265, 270, 275.⁴Women take EdP 130W-1W; men not taking R.O.T.C. take EdP 101-2.⁵Non-Catholic students take an elective.⁶French or German preferred. See also footnote 6 on page 61.⁷Sophomores elect 6 hrs. from Eng 201, 202, 203, 204 and 205.⁸Women take EdP 140W; men not taking R.O.T.C. take EdP 201-2.⁹Eng 405 or 431.¹⁰Eng 316, 318, 428.¹¹Eng 412, 413, 420, 434, 435.¹²Eng 438, 441, 442.¹³Except for Eng 490, the required courses in English could be taken in any term of the junior and senior year.¹⁴Eng 450, 452, 454, 456.¹⁵Eng 362, 423, 424, 425.

PROGRAM—A4: BACHELOR OF ARTS WITH A MAJOR IN FINE ARTS

<i>Dept.</i>	<i>No.</i>	<i>Course</i>	<i>1st Term¹</i>	<i>2nd Term</i>	<i>3rd Term</i>
<i>Freshman Year</i>					
ART	101-2	Introductory Drawing	2-0-2	2-0-2	
ART	111-12	Principles of Design	2-0-2	2-0-2	
ENG	101-6	Freshman English	3-0-3	3-0-3	
PHL	106	Problems in Philosophy I	3-0-3		
HST	101-2	History of Civilization	3-0-3	3-0-3	
MIL ²	101-2	First Year Basic Course	2-1-1	2-1-1	
THL ³	152	Intro. to Sacred Scriptures		3-0-3	
— ⁴	—	Foreign Language	3-0-3	3-0-3	
			17	17	
<i>Sophomore Year</i>					
ART	226-7	Introductory Painting	2-0-2	2-0-2	
ART	191	Lettering and Calligraphy	2-0-2		
ART	251	Graphics		2-0-2	
ART ⁶	—	Electives	4-0-4	4-0-4	
ENG	—	Sophomore English	3-0-3	3-0-3	
PHL	206	Problems in Philosophy II	3-0-3		
THL ³	220	Theology of Christ		3-0-3	
MIL ⁵	201-2	Second Year Basic Course	2-1-1	2-1-1	
—	—	Foreign Language	3-0-3	3-0-3	
			18	18	
<i>Junior Year</i>					
ART ⁸	—	Electives	4-0-4	4-0-4	
PHL ⁴	—	Elective	3-0-3		
—	—	Elective		3-0-3	
SPE	101	Fundamentals of Effective Speaking	3-0-3		
—	—	Science Course	3-3-4	3-3-4	
ART	371	History of Ancient Art	3-0-3		
ART	372	Renaissance Art		3-0-3	
SOC	203	Sociology		3-0-3	
			17	17	
<i>Senior Year</i>					
ART ⁸	—	Electives	4-0-4	4-0-4	
ART	471	Development of Modern Art	3-0-3		
ART	472	Art in the Twentieth Century		3-0-3	
—	—	Elective	3-0-3		
PHL ⁷	—	Elective		3-0-3	
THL ³	—	Theology elective	4-0-4	2-0-2	
PSY	201	Introductory Psychology		3-0-3	
—	—	Electives	3-0-3	3-0-3	
			17	18	

¹Under "Term," 3-0-3 means 3 hrs. class, 0 hrs. laboratory, and 3 hrs. credit.²Women students take EdP 130-1; men not taking R.O.T.C. take EdP 101-2.³Non-Catholic students may take an elective.⁴Students may choose Phl 455 Philosophy of Art if it is offered.⁵Women students take EdP 140; men not taking R.O.T.C. take EdP 201-2.⁶Choose from Art 231-2 Sculpture, Art 261 Enameling, Art 263 Jewelry, Art 217-18, Art 317-18 Design, Art 208-9 Drawing, Art 321-2 Painting.⁷Students may choose Phl 456 Philosophy of Creativity if it is offered.⁸Students are to select 4 hours each term from upper level art courses.⁹See footnote 6 on page 61.

PROGRAM—A5: BACHELOR OF FINE ARTS

<i>Dept.</i>	<i>No.</i>	<i>Course</i>	<i>1st Term</i> ¹	<i>2nd Term</i>	<i>3rd Term</i>
<i>Freshman Year</i>					
ART	101-2	Introductory Drawing	2-0-2	2-0-2	
ART	111-2	Principles of Design	2-0-2	2-0-2	
ART	191-2	Lettering and Calligraphy	2-0-2	2-0-2	
ART	226-7	Introductory Painting	2-0-2	2-0-2	
ENG	101-6	Freshman English	3-0-3	3-0-3	
MIL ²	101-2	First Year Basic Course	2-1-1	2-1-1	
PHL	106	Problems in Philosophy I	3-0-3		
THL ³	152	Intro. to Sacred Scriptures		3-0-3	
HST	101-2	History of Civilization	3-0-3	3-0-3	
			18	18	
<i>Sophomore Year</i>					
ART	317	Intermediate Design	2-0-2		
ART	—	Elect either Art 217-18, 318			
		Design or Art 321 Advanced Painting		2-0-2	
ART	208-9	Intermediate Drawing	2-0-2	2-0-2	
ART	231-2	Sculpture	2-0-2	2-0-2	
ART ⁴	C221-2	Ceramics	2-0-2	2-0-2	
ENG	—	Sophomore English	3-0-3	3-0-3	
HST ⁵	—	American History elective		3-0-3	
PHL	206	Problems in Philosophy II	3-0-3		
THL ³	221	Theology of Christ		3-0-3	
MIL ⁶	201-2	Second Year Basic Course	2-1-1	2-1-1	
			15	18	
<i>Junior Year</i>					
ART	371	History of Ancient Art	3-0-3		
ART	372	Renaissance Art		3-0-3	
ART	251-2	Graphics	2-0-2	2-0-2	
ART	261	Introductory Enameling	2-0-2		
ART	263	Jewelry: Introductory Casting		2-0-2	
ART ⁷	—	Electives: 4 hours each term	4-0-4	4-0-4	
PHL ⁸	—	Elective	3-0-3		
THL ³	—	Theology elective	4-0-4	3-0-3	
PSY	201	Introductory Psychology		3-0-3	
			18	17	
<i>Senior Year</i>					
ART	471	Development of Modern Art	3-0-3		
ART	472	Art in the Twentieth Century		3-0-3	
ART ⁹	—	Electives: 10 hours each term	10-0-10	10-0-10	
PHL ⁸	—	Elective		3-0-3	
SOC	203	General Sociology	3-0-3		
			16	16	

¹Under "Term," 3-0-3 means 3 hrs. class, 0 hrs. laboratory, and 3 hrs. credit.²Women students take EdP 130-1; men not taking R.O.T.C. take EdP 101-2.³Non-Catholic students take an elective.⁴This course is taken at the Dayton Art Institute.⁵Elect from Hst 251-2, 260, 265, 270 and 275.⁶Women students take EdP 140; men not taking R.O.T.C. take EdP 201-2.⁷Electives must be used toward fulfillment of major requirements within the following principal professional divisions of the Department of Fine Arts: drawing, painting, sculpture, ceramics, crafts, graphics, and design (including advertising design and industrial design).⁸Students may take Phl 456 Philosophy of Creativity or Phl 455 Philosophy of Art if these courses are offered.

MINOR IN FINE ARTS

To minor in Fine Arts, 19 hours are required. Art 101-102 Introductory Drawing, and Art 111-112 Principles of Design must be taken before any of the other courses.

The student is to elect one Art History course. He then selects 8 hours in one, or at most two fields. The fields of choice are: Drawing, Design, Painting, Sculpture, Ceramics, Graphics, and Crafts. It is suggested that the student take one two-hour art course for four terms in order to allow for 8 hours of electives within the field or fields of his choice.

ART	101-2	Introductory Drawing	2-0-2	2-0-2
ART	111-2	Principles of Design	2-0-2	2-0-2
ART	—	Elect one History of Art Course	3-0-3	
ART ¹	—	Electives: 2 hours in each term	2-0-2	2-0-2
ART ¹	—	Electives: 2 hours in each term	2-0-2	2-0-2
			11	8

¹The elected courses can be taken from one, but not more than two of the following fields: Drawing, Design, Painting, Sculpture, Ceramics, Graphics, and Crafts, in order to get the 8 hours.

PROGRAM—A6: BACHELOR OF ARTS WITH A MAJOR IN HISTORY

Dept.	No.	Course	1st Term ¹	2nd Term	3rd Term
<i>Freshman and Sophomore Years</i>					
Follow general requirements (p. 61)					
<i>Junior Year</i>					
HST	—	History electives	6-0-6	6-0-6	
PHL	—	Philosophy elective	3-0-3		
THL ²	—	Theology	4-0-4		
—	—	General elective		6-0-6	
—	—	Minor	3-0-3	3-0-3	
			16	15	
<i>Senior Year</i>					
HST ³	401	Pro-Seminar in History	3-0-2		
HST	—	History electives	6-0-6	6-0-6	
PHL	—	Philosophy elective		3-0-3	
THL ⁴	—	Theology elective	2-0-2		
—	—	General elective	3-0-3	3-0-3	
—	—	Minor	3-0-3	3-0-3	
			16	15	

¹Under "Term," 3-0-3 means 3 hrs. class, 0 hrs. laboratory, and 3 hrs. credit.

²Non-Catholic students take an elective.

³May be taken in either the first or second term.

⁴Non-Catholic students take Phl 404.

PROGRAM—A7: BACHELOR OF ARTS WITH A MAJOR IN LANGUAGE

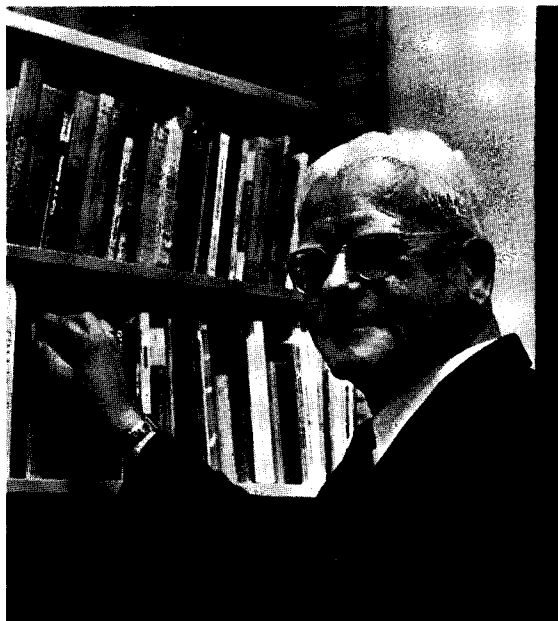
<i>Dept.</i>	<i>No.</i>	<i>Course</i>	<i>1st Term¹</i>	<i>2nd Term</i>	<i>3rd Term</i>
<i>Freshman and Sophomore Years</i>					
Follow general requirements (p. 61)					
<i>Junior Year²</i>					
PHL	—	Philosophy elective		3-0-3	
THL ³	—	Theology elective	4-0-4		
—	—	General elective	3-0-3	3-0-3	
—	—	Language courses	6-0-6	6-0-6	
—	—	Minor	3-0-3	3-0-3	
			16	15	
<i>Senior Year⁴</i>					
PHL	—	Philosophy elective		3-0-3	
THL ³	—	Theology elective	2-0-2		
—	—	General elective	3-0-3	3-0-3	
—	—	Language courses	6-0-6	6-0-6	
—	—	Minor	3-0-3	3-0-3	
			14	15	

¹Under "Term," 3-0-3 means 3 hrs. class, 0 hrs. laboratory, and 3 hrs. credit.

²Students with a composite major arrangement may begin their second language in the fourth term, whether they continue the first language or not. A language major may minor in any other field approved in the College of Arts and Sciences, but a minor in languages is highly recommended.

³Non-Catholic students take an elective.

⁴It is recommended that students take any course, such as the history of a particular country or period, which will strengthen their grasp of the cultural background of the languages they are studying. It is possible also that in view of certain types of teaching or graduate work a student would elect special technical courses, such as psychology, statistics, etc. A good student with a background in two languages may be permitted to take as little as one term of a new language for reasons approved by the department chairman. In general, however, any additional language should be taken for at least two terms.



PROGRAM—A8: BACHELOR OF ARTS WITH A MAJOR IN MATHEMATICS

<i>Dept.</i>	<i>No.</i>	<i>Course</i>	<i>1st Term</i> ¹	<i>2nd Term</i>	<i>3rd Term</i>
<i>Freshman Year</i>					
ENG	101-6	Freshman English	3-0-3	3-0-3	
HST ²	—	History electives	3-0-3	3-0-3	
MIL ³	101-2	First Year Basic Course	2-1-1	2-1-1	
MTH	128-9	Analytic Geometry and Calculus	4-0-4	4-0-4	
PHL	106	Problems in Philosophy I	3-0-3		
THL ⁴	152	Intro. to Sacred Scripture		3-0-3	
— ⁵	—	Modern Language Course	3-0-3	3-0-3	
			17	17	
<i>Sophomore Year</i>					
ENG	—	Sophomore English	3-0-3	3-0-3	
HST ²	—	American History elective		3-0-3	
MIL ⁵	201-2	Second Year Basic Course	2-1-1	2-1-1	
MTH	228	Analytic Geometry and Calculus	4-0-4		
MTH	229	Differential Equations		3-0-3	
PHL	206	Problems in Philosophy II	3-0-3		
SPE	101	Fundamentals of Effective Speaking	3-0-3		
THL ⁴	220	Theology of Christ		3-0-3	
—	—	Modern Language course	3-0-3	3-0-3	
			17	16	
<i>Junior Year</i>					
HST ²	—	American History elective	3-0-3		
MTH	361	Introduction to Abstract Algebra		3-0-3	
MTH	362	Introduction to Linear Algebra and Matrices	3-0-3		
MTH	411	Probability and Statistics		3-0-3	
MTH	—	Mth elective	3-0-3		
CPS	247	PL/1 Programming		2-0-2	
PHL	—	Philosophy elective	3-0-3		
THL ⁴	—	Theology elective		2-0-2	
PSY	201	Introductory Psychology		3-0-3	
—	—	Minor	3-0-3	3-0-3	
			15	16	
<i>Senior Year</i>					
MTH	412-3	Probability and Statistics	3-0-3	3-0-3	
MTH	421-2	Advanced Calculus	3-0-3	3-0-3	
THL ⁴	—	Elective	2-0-2	2-0-2	
Soc	201	General Sociology		3-0-3	
PHL	—	Elective	3-0-3		
—	—	Minor	3-0-3	3-0-3	
			14	14	

¹Under "Term," 3-0-3 means 3 hrs. class, 0 hrs. laboratory, and 3 hrs. credit.²See footnote 2, p. 61.³Women take EdP 110-1; men not taking R.O.T.C. take EdP 101-2.⁴Non-Catholic students take an elective.⁵Women take EdP 112-3; men not taking R.O.T.C. take EdP 201-2.⁶See footnote 6 on page 61.

PROGRAM—A9: BACHELOR OF ARTS WITH A MAJOR IN MUSIC

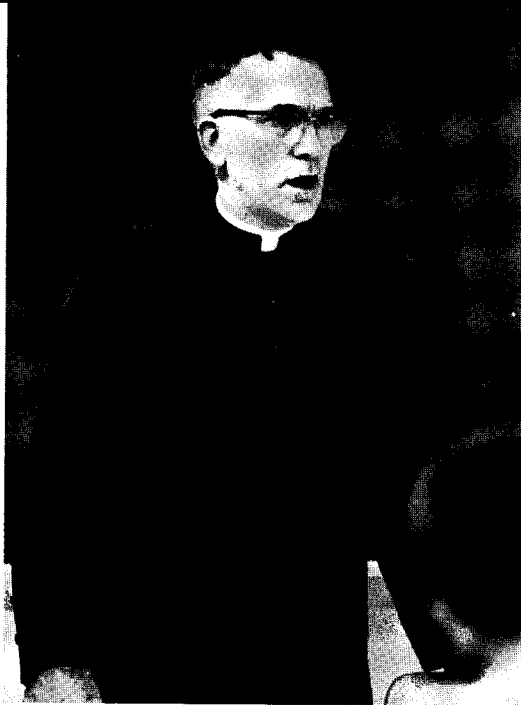
<i>Dept.</i>	<i>No.</i>	<i>Course</i>	<i>1st Term¹</i>	<i>2nd Term</i>	<i>3rd Term</i>
<i>Freshman Year</i>					
ENG	101-6	Freshman English	3-0-3	3-0-3	
MIL ²	101-2	First Year Basic Course	2-1-1	2-1-1	
MUS	151-2	First Year Theory	5-0-4	5-0-4	
MUS	108	Intro. to Music Literature		2-0-2	
MUS ³	—	Applied Music	2-0-2	2-0-2	
PHL	106	Problems in Philosophy I	3-0-3		
THL ⁴	152	Intro. to Sacred Scripture		3-0-3	
— ⁵	—	Modern Language Course	3-0-3	3-0-3	
			16	18	
<i>Sophomore Year</i>					
ENG	—	Sophomore English	3-0-3	3-0-3	
MIL ²	201-202	Second Year Basic Course	2-1-1	2-1-1	
MUS	251	Second Year Theory	5-0-4		
MUS	262	Musical Form		3-0-2	
PHL	206	Problems in Philosophy II	3-0-3		
THL ⁴	220	Theology of Christ		3-0-3	
HST	—	History electives	3-0-3	3-0-3	
—	—	Modern Language Course	3-0-3	3-0-3	
SPE	101	Fundamentals of Effect. Speaking		3-0-3	
			17	18	
<i>Junior Year</i>					
MUS	301-2	History of Music, I, II	3-0-3	3-0-3	
MUS ³	—	Applied Music	2-0-2	2-0-2	
HST	—	American History electives	3-0-3	3-0-3	
PHL	—	Philosophy elective		3-0-3	
—	—	Science Course	3-3-4	3-3-4	
—	—	Minor	3-0-3	3-0-3	
THL	—	Theology elective	2-0-2		
			17	18	
<i>Senior Year</i>					
PHL	—	Philosophy elective	3-0-3		
THL	—	Theology electives	2-0-2	2-0-2	
—	—	Minor	3-0-3	3-0-3	
MUS ⁵	—	Music electives	4-0-4	4-0-4	
PSY	201	Intro. to Psychology	3-0-3		
SOC	203	Intro. to Sociology		3-0-3	
—	—	Elective—Music or Academic		4-0-4	
			15	16	
Ensembles (ref. p. 236)			2-4 credits		

¹Under "Term," 3-0-3 means 3 hrs. class, 0 hrs. laboratory, and 3 hrs. credit.²Women take required courses in Physical and Health Education (EdP).³Piano, Voice, Organ, Orchestra or Band Instrument.⁴Non-Catholic students take an elective.⁵Select from Mus 322, 341, 303, 315, 300-400 courses in theory or composition, or applied music.⁶See footnote 6 on page 61.

PROGRAM—A10: BACHELOR OF MUSIC

<i>Dept.</i>	<i>No.</i>	<i>Course</i>	<i>1st Term</i> ¹	<i>2nd Term</i>	<i>3rd Term</i>
<i>Freshman Year</i>					
ENG	101-6	Freshman English	3-0-3	3-0-3	
MIL ²	101-2	First Year Basic Course	2-1-1	2-1-1	
MUS	108	Intro. to Mus. Lit.		2-0-2	
MUS	151-2	First Year Theory	5-0-4	5-0-4	
MUS ³	—	Applied music	2-0-2	2-0-2	2-0-2
PHL	106	Problems in Philosophy I	3-0-3		
THL ⁴	152	Intro. to Sacred Scripture		3-0-3	
—	—	Social studies course	3-0-3		
			16	15	2
<i>Sophomore Year</i>					
ENG	—	Sophomore English	3-0-3		
MIL ⁵	201-2	Second Year Basic Course	2-1-1	2-1-1	
MUS	251	Second Year Theory	5-0-4		
MUS	262	Musical Form		3-0-2	
MUS	272	Keyboard Harmony		2-0-2	
MUS ³	—	Applied music	2-0-2	2-0-2	2-0-2
PHL	206	Problems in Philosophy II	3-0-3		
THL ⁴	220	Theology of Christ		3-0-3	
—	—	General electives	4-0-4	4-0-4	
—	—	Social studies course		3-0-3	
			17	17	2
<i>Junior Year</i>					
MUS	301-2	History of Music	3-0-3	3-0-3	
MUS	341	Conducting	3-0-3		
MUS ³	—	Applied music	2-0-2	2-0-2	2-0-2
MUS	—	Music theory electives	2-0-2	2-0-2	
PHL	—	Philosophy elective	3-0-3		
PHL	—	Philosophy elective		3-0-3	
PSY	201	Introductory Psychology		3-0-3	
SPE	101	Fundamentals of Effective Speaking	3-0-3		
— ⁶	—	General electives		4-0-4	
			16	17	2
<i>Senior Year</i>					
MUS ⁶	—	Music electives	14-0-14	14-0-14	
THL ⁴	—	Theology elective	2-0-2		
THL ⁴	—	Theology elective		2-0-2	2-0-2
			16	16	2
Ensembles (ref. p. 236)			4-6 credits		

¹Under "Term," 3-0-3 means 3 hrs. class, 0 hrs. laboratory, and 3 hrs. credit.²Women take EdP 110-1; men not taking R.O.T.C. take EdP 101-2.³Students majoring in theory, violin, voice, or orchestra or band instrument will be required to use piano or organ as a minor or demonstrate ability to play the piano at a level satisfactory to the department. Applied music majors will need to take a minimum of 4 credit hours in their major during 3rd terms. Voice majors may be required to take modern languages.⁴Non-Catholic students take an elective.⁵Women take EdP 112-3; men not taking R.O.T.C. take EdP 201-2.⁶Electives must be used toward fulfillment of major and minor requirements in music. Additional hours for remaining electives may be taken in applied music or theory courses, or Mus 303, 315, 322, 325, 326, 327, 328, 335-6, 361-2, 421, 422, 451-2.



PROGRAM—A11: BACHELOR OF ARTS WITH A MAJOR IN PHILOSOPHY

<i>Dept.</i>	<i>No.</i>	<i>Course</i>	<i>1st Term¹</i>	<i>2nd Term</i>	<i>3rd Term</i>
<i>Freshman and Sophomore Years</i>					
Follow general requirements (p. 61)					
<i>Junior Year</i>					
PHL	303	Cosmology	3-0-3		
PHL	306	Epistemology	3-0-3		
PHL	402	General Metaphysics		3-0-3	
PHL	404	Ethics		3-0-3	
THL	—	Theology elective	2-0-2	2-0-2	
—	—	Elective ²	3-0-3		
—	—	Minor	3-0-3	3-0-3	
—	—	Electives	3-0-3	3-0-3	
			<u>17</u>	<u>14</u>	
<i>Senior Year</i>					
PHL	403	Natural Theology	3-0-3		
PHL	—	Elective		3-0-3	
PHL	—	Elective	3-0-3		
THL	—	Theology elective		2-0-2	
PHL	—	Philosophy elective		3-0-3	
—	—	Minor	3-0-3	3-0-3	
—	—	Electives	3-0-3	3-0-3	
—	—	Elective	3-0-3		
			<u>15</u>	<u>14</u>	

¹Under "Term," 3-0-3 means 3 hrs. class, 0 hrs. laboratory, and 3 hrs. credit.

PROGRAM—A12: BACHELOR OF ARTS WITH A MAJOR IN POLITICAL SCIENCE

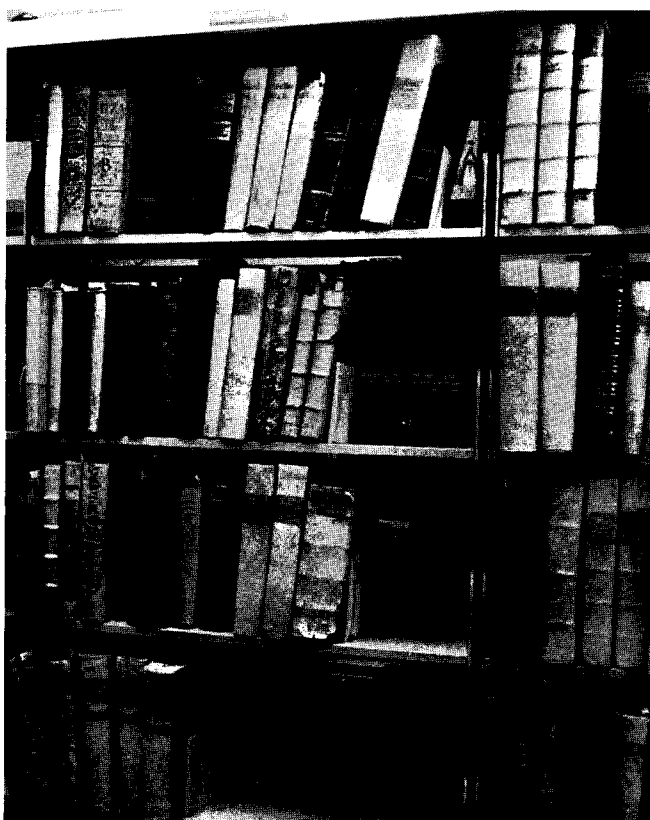
A student must successfully complete a minimum of 124 semester hours for the degree.

1. *Humanities*. 36 semester hours, chosen from courses offered by the Departments of Communication Arts, English, Fine Arts, History, Languages, Music, Philosophy, and Theological Studies. These must include Eng 101-106, Freshman English (6), six semester hours of history, and Phl 106-206, Problems in Philosophy (6), and six semester hours of philosophy chosen from 300-400 level courses. Catholic students also take three semester hours of Theological Studies, chosen from Thl 110, 152, 153, and 154; and Thl 220, and six hours chosen from 300 and 400 level courses.
2. *Social and Behavioral Science*. Six semester hours chosen from courses offered by the Departments of Economics, Psychology, and Sociology and Anthropology.
3. *Political Science*. 30 semester hours, which are to include Pol 101, Introduction to Political Science, Pol 201, American National Government, and 24 hours chosen from 300-400 level courses. The advanced courses are to be distributed among the various areas as shown under the Department heading in the catalog.
4. *Minor Subject*. One minor subject is studied, chosen from any of the Departments of the College of Arts and Sciences. The requirements of the Departments concerned are followed, but ordinarily twelve semester hours of 300-400 courses are required. Students who are accepted may minor in Secondary Education.
5. *Laboratory Science*. Eight semester hours of laboratory science.
6. *Military Science*. Military Science/Physical Education—full-time male students take Mil 101-102, First Year Basic Course, and Mil 201-202, Second Year Basic Course. Full-time men not taking R.O.T.C. take EdP 101-102 and EdP 201-202. Full-time women students take EdP 130W-131W and EdP 140W.
7. *Tool of Research*. One of the following sequences:
 - A) completion of a foreign language at the intermediate level (202) or the equivalent as determined by the Department of Languages;
 - B) four terms of the following, in any combination:
 1. two terms of foreign language
 2. Acc 207-208, or ACC 203
 3. Cps 203
 4. Mth 101, 111, 112, 113, 118, 119

PROGRAM—A13: BACHELOR OF SOCIAL SCIENCE WITH A MAJOR IN POLICE ADMINISTRATION

A student must successfully complete a minimum of 124 semester hours for the degree.

1. *Humanities*. 27 semester hours, chosen from courses offered by the Departments of Communication Arts, English, Fine Arts, History, Languages, Music, Philosophy, and Theological Studies. These must include Eng 101-106, Freshman English (6), and Phl 106-206, Problems in Philosophy (6). Catholic students also take 12 semester hours of Theological Studies, which must include three hours chosen from Thl 110, 152, 153, and 154; and Thl 220.
2. *Social and Behavioral Sciences*. 39 semester hours chosen from courses offered by the Departments of Economics, Political Science, Psychology, and Sociology and Anthropology. These must include Pol 201, American National Government; Pol 302, Ohio Government or Pol 303, State and Local Government; Psy 201, Introductory Psychology; Soc 203, Introduction to Sociology; Soc 307, Criminology and Penology; Soc 313, Juvenile Delinquency.
3. *Police Administration*. 24 semester hours, including Pad 200, Introduction to Police Administration; Pad 301, Criminalistics; and Pad 313, Criminal Law and Procedure.
4. *Science*. 4 semester hours of laboratory science.
5. *Military Science/Physical Education*. full-time male students take Mil 101-102, First Year Basic Course, and Mil 201-202, Second Year Basic Course. Full-time men not taking R.O.T.C. take EdP 101-102 and EdP 201-202. Full-time women students take EdP 130W-131W and EdP 140W.



PROGRAM—A14: BACHELOR OF ARTS WITH A MAJOR IN PSYCHOLOGY

<i>Dept.</i>	<i>No.</i>	<i>Course</i>	<i>1st Term¹</i>	<i>2nd Term</i>	<i>3rd Term</i>
<i>Freshman Year</i>					
BIO	101-2	Biology	3-3-4	3-3-4	
ENG	101-6	Freshman English	3-0-3	3-0-3	
HST ²	—	History elective	3-0-3	3-0-3	
MIL ³	101-2	First Year Basic Course	2-1-1	2-1-1	
PHL	106	Problems in Philosophy I	3-0-3		
THL ⁶	—	Theology elective		3-0-3	
— ⁵	—	Language Course	3-0-3	3-0-3	
			17	17	
<i>Sophomore Year</i>					
ENG	—	Sophomore English	3-0-3	3-0-3	
HST ²	—	American History elective	3-0-3	3-0-3	
MIL ⁴	201-2	Second Year Basic Course	2-1-1	2-1-1	
PHL	206	Problems in Philosophy II	3-0-3		
PSY	201	Introductory Psychology	3-0-3		
THL ⁷	220	Theology of Christ		3-0-3	
— ⁸	—	Language Course	3-0-3	3-0-3	
PSY	—	Psychology elective		3-0-3	
			16	16	
<i>Junior Year</i>					
PHL	—	Philosophy elective		3-0-3	
— ⁸	—	General elective	3-0-3	3-0-3	
PSY	—	Psychology elective	3-0-3	3-0-3	
PSY	303	Experimental Design and Inference		3-0-3	
PSY	302	Elementary Statistics	3-0-3		
SPE	101	Fundamentals of Effective Speaking		3-0-3	
THL ⁷	—	Theology elective	4-0-4		
—	—	Minor	3-0-3		
			16	15	
<i>Senior Year</i>					
PHL	—	Philosophy elective	3-0-3		
PSY	—	Psychology elective	3-0-3	6-0-6	
PSY	308	Experimental Psychology	3-2-4		
THL ⁷	—	Theology elective	2-0-2		
— ⁸	—	General elective		3-0-3	
—	—	Minor	3-0-3	6-0-6	
			15	15	

¹Under "Term," 3-0-3 means 3 hrs. class, 0 hrs. laboratory, and 3 hrs. credit.²Freshmen elect 6 hrs. from Hst 120, 125, 130, 135. Sophomores elect 6 hrs. from Hst. 260, 265, 270, 275.³Women take EdP 130-1; men not taking R.O.T.C. take EdP 101-2.⁴Women take EdP 140; men not taking R.O.T.C. take EdP 201-2.⁵See footnote 6 on page 61.⁶Freshmen elect from Thl 110, 152, 153, 154. Non-Catholic students take an elective.⁷Non-Catholic students take an elective.⁸Certain mathematics courses are recommended for students planning to pursue graduate study.

PROGRAM—A15: BACHELOR OF SCIENCE WITH A MAJOR IN PSYCHOLOGY
BIOLOGICAL EMPHASIS

<i>Dept.</i>	<i>No.</i>	<i>Course</i>	<i>1st Term</i> ¹	<i>2nd Term</i>	<i>3rd Term</i>
<i>Freshman Year</i>					
BIO	101	General Biology		3-3-4	
CHM	123-4	General Chemistry	3-3-4	3-3-4	
ENG	101-6	Freshman English	3-0-3	3-0-3	
MIL ²	101-2	First Year Basic Course	2-1-1	2-1-1	
MTH ⁶	112-13	Intro. Mathematical Analysis	3-0-3	3-0-3	
PHL	106	Problems in Philosophy I	3-0-3		
THL ⁴	—	Theology elective		3-0-3	
			14	18	
<i>Sophomore Year</i>					
BIO	102	General Biology	3-3-4		
PSY	201	Introductory Psychology	3-0-3		
CHM	313-4	Organic Chemistry	3-3-4	3-3-4	
MIL ³	201-2	Second Year Basic Course	2-1-1	2-1-1	
PHL	206	Problems in Philosophy II		3-0-3	
ENG	—	Sophomore English		3-0-3	
PSY	—	Psychology elective		3-0-3	
SPE	101	Fundamentals of Effective Speaking		3-0-3	
THL ⁵	202	Theology of Christ	3-0-3		
			15	17	
<i>Junior Year</i>					
BIO	—	Biology elective		3-3-4	
PHY	201-2	General Physics	3-2-4	3-2-4	
—	—	General elective		3-0-3	
PSY	—	Psychology elective	3-0-3		
PSY	302	Elementary Statistics	3-0-3		
PSY	303	Experimental Design and Inference		3-0-3	
— ⁷	—	Modern Language	3-0-3	3-0-3	
THL ⁵	—	Theology elective	4-0-4		
			17	17	
<i>Senior Year</i>					
BIO	—	Biology elective	3-3-4		
PSY	308	Experimental Psychology		3-2-4	
—	—	General elective	3-0-3	6-0-6	
THL ⁵	—	Theology elective	2-0-2		
PSY	—	Psychology elective	6-0-6	6-0-6	
			15	16	

¹Under "Term," 3-0-3 means 3 hrs. class, 0 hrs. laboratory, and 3 hrs. credit.²Women take EdP 130-1; men not taking R.O.T.C. take EdP 101-2.³Women take EdP 140; men not taking R.O.T.C. take EdP 201-2.⁴Freshmen elect from Thl 110, 152, 153, 154. Non-Catholic students take an elective.⁵Non-Catholic students take an elective.⁶May substitute Mth 101 for Mth 112 and Mth 112 for 113.

PROGRAM-A16: BACHELOR OF SCIENCE WITH A MAJOR IN PSYCHOLOGY

<i>Dept.</i>	<i>No.</i>	<i>Course</i>	<i>1st Term¹</i>	<i>2nd Term</i>	<i>3rd Term</i>
<i>Freshman Year</i>					
BIO	101	General Biology		3-3-4	
CHM	123-4	General Chemistry	3-3-4	3-3-4	
ENG	101-6	Freshman English	3-0-3	3-0-3	
MIL ²	101-2	First Year Basic Course	2-1-1	2-1-1	
MTH ⁶	112-13	Introductory Mathematical Analysis	3-0-3	3-0-3	
PHL	106	Problems in Philosophy I	3-0-3		
THL ⁴	—	Theology elective		3-0-3	
			14	18	
<i>Sophomore Year</i>					
PSY	201	Introductory Psychology	3-0-3		
— ⁷	—	Modern Language	3-0-3	3-0-3	
MIL ³	201-2	Second Year Basic Course	2-1-1	2-1-1	
PHL	206	Problems in Philosophy II	3-0-3		
PHY	201-2	General Physics	3-2-4	3-2-4	
PSY	302	Elementary Statistics		3-0-3	
—	—	General elective	3-0-3	3-0-3	
THL ⁵	220	Theology of Christ		3-0-3	
			17	17	
<i>Junior Year</i>					
PSY	303	Experimental Design & Inference	3-0-3		
PSY	—	Psychology elective	3-0-3	9-0-9	
PSY	308	Experimental Psychology		3-2-4	
SPE	101	Fundamentals of Effective Speaking	3-0-3		
—	—	General elective	3-0-3	3-0-3	
THL ⁵	—	Theology	3-0-3		
			15	16	
<i>Senior Year</i>					
PSY	—	Psychology elective	6-0-6	9-0-9	
—	—	General elective	9-0-9	3-0-3	
THL ⁵	—	Theology elective		3-0-3	
			15	15	

¹Under "Term," 3-0-3 means 3 hrs. class, 0 hrs. laboratory, and 3 hrs. credit.²Women take EdP 130-1; men not taking R.O.T.C. take EdP 101-2.³Women take EdP 140; men not taking R.O.T.C. take EdP 201-2.⁴Freshmen elect from Thl 110, 152, 153, 154. Non-Catholic students take an elective.⁵Non-Catholic students take an elective.⁶May substitute Mth 101 for Mth 112 and Mth 112 for 113.⁷French, German, or Russian preferred.

PROGRAM—A17: BACHELOR OF ARTS WITH A MAJOR IN SOCIOLOGY,
SOCIAL WORK OR ANTHROPOLOGY

<i>Dept.</i>	<i>No.</i>	<i>Course</i>	<i>1st Term¹</i>	<i>2nd Term</i>	<i>3rd Term</i>
<i>Freshman Year</i>					
ENG	101-6	Freshman English	3-0-3	3-0-3	
HST ^a	—	History electives	3-0-3	3-0-3	
MIL ^a	101-2	First Year Basic Course	2-1-1	2-1-1	
PHL	106	Problems of Philosophy I	3-0-3		
THL ^b	152	Introduction to Sacred Scripture		3-0-3	
— ^c	—	Modern Language Course	3-0-3	3-0-3	
—	—	Science Course	3-2-4	3-2-4	
			17	17	
<i>Sophomore Year</i>					
ENG	—	Sophomore English	3-0-3	3-0-3	
HST ^a	—	American History electives	3-0-3	3-0-3	
MIL ^a	201-2	Second Year Basic Course	2-1-1	2-1-1	
PHL	206	Problems of Philosophy II	3-0-3		
PSY	201	Introductory Psychology		3-0-3	
SOC	203	Introduction to Sociology	3-0-3		
THL ^b	220	Theology of Christ		3-0-3	
— ^c	—	Modern Language Course	3-0-3	3-0-3	
			16	16	
<i>Junior Year—Sociology Majors</i>					
PHL	—	Philosophy elective ^a	3-0-3		
SOC	401-2	Social Research Methods and Statistics	3-0-3	3-0-3	
SOC	420	Classical Sociological Theory	3-0-3		
SOC	422	Contemporary Sociological Theory		3-0-3	
SOC ⁷	—	Sociology elective		3-0-3	
SPE	101	Fundamentals of Effective Speaking	3-0-3		
THL ^b	—	Theology electives	2-0-2	2-0-2	
—	—	Minor	3-0-3	3-0-3	
			17	14	
<i>Junior Year—Social Work Majors</i>					
PHL	—	Philosophy elective ^a	3-0-3		
SOC	305	Introduction to Social Work	3-0-3		
SOC	306	Casework	3-0-3		
SOC	418	Community Organization		3-0-3	
SOC	424	Group Work		3-0-3	
SPE	101	Fundamentals of Effective Speaking	3-0-3		
THL ^b	—	Theology electives	2-0-2	2-0-2	
—	—	General elective		3-0-3	
—	—	Minor	3-0-3	3-0-3	
			17	14	

<i>Dept.</i>	<i>No.</i>	<i>Course</i>	<i>1st Term¹</i>	<i>2nd Term</i>	<i>3rd Term</i>
<i>Junior Year—Anthropology Majors</i>					
PHL	—	Philosophy elective ⁸	3-0-3		
Soc	320	Introduction to Anthropology	3-0-3		
Soc	401-2	Social Research Methods and Statistics	3-0-3	3-0-3	
Soc	403	Primitive Religion		3-0-3	
SPE	101	Fundamentals of Effective Speaking	3-0-3		
THL ⁶	—	Theology electives	2-0-2	2-0-2	
—	—	General elective		3-0-3	
—	—	Minor	3-0-3	3-0-3	
			17	14	
<i>Senior Year—Sociology Majors</i>					
PHL	—	Philosophy elective ⁸		3-0-3	
Soc	415	Senior Seminar in Sociology	3-0-3		
Soc ⁷	—	Sociology electives	3-0-3	6-0-6	
THL ⁵	—	Theology elective	2-0-2		
—	—	General electives	3-0-3	3-0-3	
—	—	Minor	3-0-3	3-0-3	
			14	15	
<i>Senior Year—Social Work Majors</i>					
PHL	—	Philosophy elective ⁸		3-0-3	
Soc	401-2	Social Research Methods and Statistics	3-0-3	3-0-3	
Soc	432	Social Work Field Experience	3-0-3		
Soc ⁷	—	Sociology electives		6-0-6	
THL ⁵	—	Theology elective	2-0-2		
—	—	General elective	3-0-3		
—	—	Minor	3-0-3	3-0-3	
			14	15	
<i>Senior Year—Anthropology Majors</i>					
PHL	—	Philosophy elective ⁸		3-0-3	
Soc	322	Culture and Personality	3-0-3		
Soc	408	Cultural Area Studies		3-0-3	
Soc ⁷	—	Sociology electives	6-0-6	3-0-3	
THL ⁵	—	Theology elective	2-0-2		
—	—	General elective		3-0-3	
—	—	Minor	3-0-3	3-0-3	
			14	15	

¹Under "Term," 3-0-3 means 3 hrs. class, 0 hrs. laboratory, and 3 hrs. credit.

²See footnote 2, p. 61.

³Women take EdP 130-1; men not taking R.O.T.C. take EdP 101-2.

⁴Women take EdP 140; men not taking R.O.T.C. take EdP 201-2.

⁵Non-Catholic students take an elective.

⁶Non-Catholic students take an elective.

⁷Sociology electives: Soc 203, 300, 301, 303, 307, 313, 315, 318, 325, 328, 406, 412, 426, 435W, and 439.

⁸Must be a 300 or 400 level course.

⁹See footnote 6 on page 61.

PROGRAM—A18: BACHELOR OF ARTS WITH A MAJOR IN
THEOLOGICAL STUDIES

<i>Dept.</i>	<i>No.</i>	<i>Course</i>	<i>1st Term</i> ¹	<i>2nd Term</i>	<i>3rd Term</i>
<i>Freshman Year</i>					
ENG	101-6	Freshman English	3-0-3	3-0-3	
HST ²	—	History electives	3-0-3	3-0-3	
MIL ³	101-2	First Year Basic Course	2-1-1	2-1-1	
PHL	106	Problems in Philosophy I	3-0-3		
THL ⁴	—	Theology elective		3-0-3	
— ⁷	—	Foreign language course	3-0-3	3-0-3	
—	—	Science course	3-2-4	3-2-4	
			17	17	
<i>Sophomore Year</i>					
ENG	—	Sophomore English	3-0-3	3-0-3	
HST ²	—	American History electives	3-0-3	3-0-3	
MIL ⁵	201-2	Second Year Basic Course	2-1-1	2-1-1	
PHL	206	Problems in Philosophy II	3-0-3		
PSY	201	Introductory Psychology		3-0-3	
SPE	101	Fundamentals of Effective Speaking	3-0-3		
THL	220	Theology of Christ		3-0-3	
— ⁷	—	Foreign language course	3-0-3	3-0-3	
			16	16	
<i>Junior Year</i>					
PHL	—	Philosophy electives	3-0-3	3-0-3	
Soc	203	Introduction to Sociology	3-0-3		
THL ⁶	—	Theology electives	6-0-6	6-0-6	
—	—	General elective		3-0-3	
—	—	Minor	3-0-3	3-0-3	
			15	15	
<i>Senior Year</i>					
PHL	—	Philosophy electives	3-0-3	3-0-3	
THL ⁶	—	Theology electives	6-0-6	6-0-6	
—	—	General electives	3-0-3	3-0-3	
—	—	Minor	3-0-3	3-0-3	
			15	15	

¹Under "Term," 3-0-3 means 3 hrs. class, 0 hrs. laboratory, and 3 hrs. credit.²See footnote 2, p. 61.³Women take EdP 130-1; men not taking R.O.T.C. take EdP 101-2.⁴Freshmen elect from Thl 110, 152, 153, 154.⁵Women take EdP 140; men not taking R.O.T.C. take EdP 201-2.⁶Recommended distribution:

3-9 crs 1. Thl 311-312; Pol 471; Judaics.

4-8 crs 2. Thl 352, 353, 354, 452, 453, 454, 459.

4-8 crs 3. Thl 360, 361, 362, 365, 380, 400, 460, 474, 476, 478.

6-8 crs 4. Thl 226, 402, 415, 425, 430, 435, 440.

2-4 crs 5. Thl 403, 404, 481.

0-6 crs 6. Thl 395H, 495H.

⁷See footnote 6 on page 61.

PROGRAM—A19: ASSOCIATE IN POLICE ADMINISTRATION

A student must successfully complete a minimum of 62 semester hours for the degree.

1. *Humanities*. 21 semester hours, chosen from courses offered by the Departments of Communication Arts, English, Fine Arts, History, Languages, Music, Philosophy, and Theological Studies. These must include: Eng 101-106, Freshman English (6), and Phl 106-206, Problems in Philosophy (6). Catholic students also take three hours of Theological Studies, chosen from Thl 110, 152, 153 and 154; and Thl 220.
2. *Social and Behavioral Sciences*. 21 semester hours, chosen from courses offered by the Departments of Economics, Political Science, Psychology, and Sociology and Anthropology. These must include Psy 201, Introductory Psychology; Soc 203, Introduction to Sociology; Soc 307, Criminology and Penology.
3. *Police Administration*. 16 semester hours, including Pad 200, Introduction to Police Administration, and Pad 313, Criminal Law and Procedure.

PROGRAM—S1: BACHELOR OF SCIENCE WITH A MAJOR IN BIOLOGY

Biology Major Curriculum

Requirements:

Major (Core courses as listed in program S-1)	23	} Science	69
Science required (CHEM., PHYSICS, MATH)	34		
Science electives (BIO., CHEM., PHYSICS, Math, etc.)	12		
Study of man (THL., PHL., SOC., PSY.)	18	} Humanities	33
Humanities electives	15		
English, Languages or General Electives	18	} General	22
Military or P.E.	4		
	124		24

Study of Man electives include theology, philosophy and certain psychology, sociology and similar courses as outlined by the General Education Program Committee.

Humanities electives are to be selected from the various courses which would broaden the individual's approach to reality.

General electives are non-specified courses which add flexibility to the program.

Science electives include physics, chemistry, mathematics, computer science and the following biology courses:

Bio. 209 Comparative Anatomy	407 Embryology
Bio. 303 Physiology	411 General Bacteriology
Bio. 310 Microtechnique and Histology	434 Higher Plants
Bio. 325 Parasitology	436 Lower Plants
Bio. 361 Invertebrate Zoology	4 Pathogenic Bacteriology and Serology

With permission of the Chairman, advanced students may also elect one or more graduate courses.

<i>Dept.</i>	<i>No.</i>	<i>Course</i>	<i>1st Term</i> ¹	<i>2nd Term</i>	<i>3rd Term</i>
<i>Freshman Year</i>					
BIO	101	General Biology		3-3-4	
CHM	123-4	General Chemistry	3-3-4	3-3-4	
ENG	101-6	Freshman English	3-0-3	3-0-3	
MIL ²	101-2	First Year Basic Course	2-1-1	2-1-1	
MTH ³	112-113	Introductory Mathematical Analysis	3-0-3	3-0-3	
— ⁴	—	Study of Man elective	3-0-3		
			14	15	
<i>Sophomore Year</i>					
BIO	102	General Biology	3-3-4		
BIO	340	Cellular Biology		3-0-3	
CHM	313-4	Organic Chemistry	3-3-4	3-3-4	
MIL ⁵	201-2	Second Year Basic Course	2-1-1	2-1-1	
— ⁶	—	Study of Man electives	3-0-3	3-0-3	
PHY	201-2	General Physics	3-2-4	3-2-4	
			16	15	
<i>Junior Year</i>					
BIO	312	General Genetics	3-0-3		
BIO	342	Developmental Biology		3-0-3	
BIO	344L-345L	Advanced Biology Laboratory	0-3-1	0-3-1	
CHM ⁷	—	Chemistry elective	3-3-4		
—	—	Humanities elective	3-0-3	3-0-3	
—	—	Modern Language	3-0-3	3-0-3	
— ⁸	—	General electives	3-0-3	3-0-3	
— ⁹	—	Study of Man elective		3-0-3	
			17	16	
<i>Senior Year</i>					
BIO	440	Environmental Biology	3-0-3		
BIO ¹⁰	420	Seminar	1-0-1		
— ¹¹	—	Science elective	3-3-4	6-6-8	
— ¹²	—	Study of Man elective	3-0-3	3-0-3	
—	—	Humanities elective	6-0-6	3-0-3	
			17	14	

¹Under "Term," 3-0-3 means 3 hrs. class, 0 hrs. laboratory, and 3 hrs. credit.²Women take EdP 130-1; men not taking R.O.T.C. take EdP 101-2.³May substitute depending on background and score on placement test.⁴Phl 106 or Thl 110, 152, 153 or 154.⁵Women take EdP 112-3; men not taking R.O.T.C. take EdP 201-2.⁶Phl 206, Thl 110 or 220, non-Catholics take Psych., Soc., Eco., etc.⁷Chm 201, 302 or 420.⁸Spe 101 in either semester.⁹Thl 220 or two 2-hr. Thl electives; non-Catholics take elective.¹⁰Either semester.¹¹Any other Bio., Chm., Phy., Mth., Cps course as needed.¹²Thl electives to total 12 cr. Non-Catholics take humanities or Phl., etc.

PROGRAM-S2: BACHELOR OF SCIENCE WITH A MAJOR IN CHEMISTRY

<i>Dept.</i>	<i>No.</i>	<i>Course</i>	<i>1st Term</i> ¹	<i>2nd Term</i>	<i>3rd Term</i>
<i>Freshman Year</i>					
CHM	123-4	General Chemistry	3-3-4	3-3-4	
ENG	101-6	Freshman English	3-0-3	3-0-3	
MIL ²	101-2	First Year Basic Course	2-1-1	2-1-1	
MTH	101	Precalculus Math	5-0-3		
MTH	128	Analytical Geometry & Calculus I		4-0-4	
GER ⁵	—	Elementary German	3-0-3	3-0-3	
THL ³	—	Theology elective	3-0-3		
THL ³	—	Theology elective		3-0-3	
			17	18	
<i>Sophomore Year</i>					
CHM	215	Quantitative Analysis	2-6-4		
CHM ⁴	315	Organic Chemistry		3-6-5	
PHL	106	Problems in Philosophy I	3-0-3		
PHL	206	Problems in Philosophy II		3-0-3	
MIL ⁶	201-2	Second Year Basic Course	2-1-1	2-1-1	
MTH	129-228	Analytical Geometry & Calculus II, III	4-0-4	4-0-4	
PHY	206-7	General Physics	3-2-4	3-2-4	
			16	17	
<i>Junior Year</i>					
CHM	303-4	Physical Chemistry	3-3-4	3-3-4	
CHM	308	Chemical Literature		2-0-2	
CHM ⁴	316	Organic Chemistry	3-6-5		
CHM	405	Qualitative Organic Analysis		1-6-3	
—	—	General elective	3-0-3		
PHY	208	General Physics	3-2-4		
SPE	101	Fundamentals of Effective Speaking		3-0-3	
THL ⁷	—	Theology elective		2-0-2	
			16	14	
<i>Senior Year</i>					
CHM	415	Analytical Chemistry	2-6-4		
CHM	417	Inorganic Chemistry		3-0-3	
CHM	497	Seminar	1-0-1		
CHM ⁸	—	Chemistry electives	3-0-3	6-0-6	
—	—	General elective		3-0-3	
THL ⁹	—	Theology elective	4-0-4		
—	—	General electives ¹⁰	3-0-3	3-0-3	
			15	15	

¹Under "Term," 3-0-3 means 3 hrs. class, 0 hrs. laboratory, and 3 hrs. credit.²Women take EdP 110-1; men not taking R.O.T.C. take EdP 101-2.³Freshmen elect from Thl 110, 152, 153, 154; non-Catholic students take an elective.⁴Chm 313-4 may be substituted with permission of the department chairman.⁵Students with 2 or more years of high school German take Ger 201; all others take Ger 101.⁶Women take EdP 112-3; men not taking R.O.T.C. take EdP 201-2.⁷Non-Catholic students take an elective.⁸Chemistry electives: Chm 404, 412, 416, 420, 499.⁹Non-Catholic students take a General elective.¹⁰General electives: Soc 201, 202, Pol 201, Acc 203, 310, Bus 315, Mth 301. One course in advanced mathematics or advanced physics may be taken. Other electives may be taken with the approval of the department chairman.

**PROGRAM—S3: BACHELOR OF SCIENCE WITH A MAJOR IN
COMPUTER SCIENCE**

Minimum graduation requirements are distributed as follows:

A. COURSES ASSOCIATED WITH THE MAJOR (about 50 credits)

1. **COMPUTER SCIENCE**—a course in basic programming, normally Cps 247, and 24 credits in upper-level courses, normally including Cps 351 and Cps 455 in the area of numerical analysis, Cps 345 and Cps 441 in the area of programming, and Cps 383 in the area of logic.
2. **MATHEMATICS**—basic calculus and differential equations and normally 9 credits in upper-level courses, including Mth 362.

B. COURSES IN OTHER AREAS (about 50 credits)

3. **HUMANITIES**—30 credits, including 6 credits in Theological Studies for Catholic students and 6 credits in Philosophy. It is recommended that 12 credits be concentrated in one area of the humanities. Eng 101, 103, 106 and Spe 101 do not apply to this requirement.
4. **SCIENCES**—normally 13 credits, including Chm 123, 124, and Phy 206, 207, 207L.
5. **COMPOSITION AND SPEECH SKILLS**—A certain level of proficiency is required in these skills. Eng 101, 103, 106, Spe 101 may be prescribed by the department or elected by the student to assist in attaining the minimum proficiency.
6. **MILITARY SCIENCE OR PHYSICAL EDUCATION**—4 credits as indicated in the general university requirements.

C. ELECTIVES (about 25 credits)

7. Additional courses to attain the required 124 credits.

More detailed information may be obtained from the department.



PROGRAM-S4: BACHELOR OF SCIENCE WITH A MAJOR IN GEOLOGY

<i>Dept.</i>	<i>No.</i>	<i>Course</i>	<i>1st Term</i> ¹	<i>2nd Term</i>	<i>3rd Term</i>
<i>Freshman Year</i>					
ENG	101-6	Freshman English	3-0-3	3-0-3	
GEO	115	Physical Geology	3-2-4		
GEO	116	Historical Geology		3-2-4	
MIL ²	101-2	First Year Basic Course	2-1-1	2-1-1	
MTH ³	128-9	Analytic Geometry and Calculus I	4-0-4	4-0-4	
PHL	106	Problems in Philosophy I		3-0-3	
THL ⁴	152	Intro. to Sacred Scripture	3-0-3		
			15	15	
<i>Sophomore Year</i>					
CHM	123-4	General Chemistry	3-3-4	3-3-4	
GEO	201	Mineralogy	3-3-4		
GEO	204	Optical Mineralogy		2-4-4	
MIL ⁵	201-2	Second Year Basic Course	2-1-1	2-1-1	
PHL	206	Problems in Philosophy II		3-0-3	
PHY ⁶	201-2	General Physics	3-2-4	3-2-4	
THL ⁴	220	Theology of Christ	3-0-3		
			16	16	
<i>Junior Year</i>					
CIE	213	Surveying		1-6-3	
GEO	301	Structural Geology	3-2-4		
GEO	—	Geology elective		3-2-4	
—	—	Non-science elective		3-0-3	
SPE	101	Fundamentals of Effective Speaking	3-0-3		
THL ⁷	—	Theology elective	2-0-2		
—	—	Modern language course	3-0-3	3-0-3	
— ⁸	—	Science electives	3-3-4	3-3-4	
			16	17	
<i>Senior Year</i>					
GEO	303	Field Geology			x-0-6
GEO	—	Geology elective	3-2-4		
—	—	Non-science elective		3-0-3	
THL ⁹	—	Theology elective	2-0-2	2-0-2	
—	—	Electives	3-0-3	3-0-3	
— ⁸	—	Science electives	3-2-4	3-2-4	
			13	13	6

¹Under "Term," 3-0-3 means 3 hrs. class, 0 hrs. laboratory, and 3 hrs. credit.²Women take EdP 110-1; men not taking R.O.T.C. take EdP 101-2.³May substitute Mth 210-1 with permission of department chairman.⁴Non-Catholic students take an elective.⁵Women take EdP 112-3; men not taking R.O.T.C. take EdP 201-2.⁶May substitute Phy 206-7 if Mth is taken in sequence.⁷Non-Catholic students take an elective.⁸Choose from courses in chemistry, mathematics, physics, biology, geology, or engineering.⁹Non-Catholic students may take electives in place of theology.

HOME ECONOMICS

The department provides two special curricula:

1. Dietetics and Institutional Management;
2. General Home Economics.

Students following these curricula may pursue a career in homemaking, interior decorating, the creating and construction of clothing; in the management of cafeterias, dormitories, and restaurants; as demonstrators for commercial manufacturing concerns; as dietitians in hospitals and other institutions; in graduate work and in research projects.

The curriculum for dietetics and institutional management meets the requirements of the American Dietetics Association. The department is one of eight in Ohio that meets the standards for vocational certification.

**PROGRAM—S5: BACHELOR OF SCIENCE WITH A MAJOR IN
HOME ECONOMICS (General Home Economics)**

<i>Dept.</i>	<i>No.</i>	<i>Course</i>	<i>1st Term¹</i>	<i>2nd Term</i>	<i>3rd Term</i>
<i>Freshman Year</i>					
BIO ^a	101-2	General Biology	3-3-4	3-3-4	
ENG	101-6	Freshman English	3-0-3	3-0-3	
HEC ^a	102-201	Foods I & II	2-3-3	2-3-3	
—	—	History electives	3-0-3	3-0-3	
EdP	110-1	Physical and Health Education	1-2-1	1-2-1	
PHL	106	Problems in Philosophy I		3-0-3	
THL ^b	152	Intro. to Sacred Scripture	3-0-3		
			17	17	



<i>Dept.</i>	<i>No.</i>	<i>Course</i>	<i>1st Term</i> ¹	<i>2nd Term</i>	<i>3rd Term</i>
<i>Sophomore Year</i>					
ENG	203, 204, 205	English		3-0-3	
HEC ²	101-211	Clothing I & II	2-3-3	2-3-3	
HEC	105	Related Art	3-0-3		
HEC	214	Textiles		3-0-3	
—	—	Modern Language Course	3-0-3	3-0-3	
EdP	112-3	Physical and Health Education	1-2-1	1-2-1	
PHL	206	Problems in Philosophy II		3-0-3	
SOC	201	General Sociology	3-0-3		
THL ⁵	220	Theology of Christ	3-0-3		
			16	16	
<i>Junior Year</i>					
HEC	221	Home Management	3-0-3		
HEC	225	Child Development	3-0-3		
HEC	303	Nutrition and Health		3-0-3	
HEC	309	Household Equipment	3-0-3		
HEC	318	Family Living		3-0-3	
HEC	328	Home Furnishing and Housing		3-0-3	
PSY	201	General Psychology	3-0-3		
SPE	101	Fundamentals of Effective Speech		3-0-3	
THL ⁶	—	Theology elective	2-0-2	2-0-2	
—	—	Minor, Major or Elective ⁷	3-0-3	3-0-3	
			17	17	
<i>Senior Year</i>					
HEC	406	Home Management II	1-4-3		
HEC	—	Home Economics electives	3-0-3	6-0-6	
THL ⁶	—	Theology elective		2-0-2	
—	—	Minor, Major or Electives	9-0-9	9-0-9	
			15	17	

¹Under "Term," 3-0-3 means 3 hrs. class, 0 hrs. laboratory, and 3 hrs. credit.

²May substitute Chm 123-4 or Chm 110-200.

³Foods I & II and Clothing I & II may be interchanged.

⁴Student may elect any lower division Hst courses.

⁵Non-Catholic students take an elective.

⁶Non-Catholic students take an elective.

⁷Can be taken in English, psychology, retailing, history, or education. Students choosing education must take Edu 208, 351, 419, and Hec 329, 405, and Chm 110-200 or 123-4. Hec courses must total 51 hours.

**PROGRAM—S6: BACHELOR OF SCIENCE WITH A MAJOR IN
HOME ECONOMICS (Dietetic Internship)**

<i>Dept.</i>	<i>No.</i>	<i>Course</i>	<i>1st Term¹</i>	<i>2nd Term</i>	<i>3rd Term</i>
<i>Freshman Year</i>					
BIO	101	General Biology		3-3-4	
CHM	123-4	General Chemistry	3-3-4	3-3-4	
ENG	101-6	Freshman English	3-0-3	3-0-3	
HEC	102-201	Foods I and II	2-3-3	2-3-3	
EDP	130-1	Physical and Health Education	1-2-1	1-2-1	
PHL	106	Problems in Philosophy I	3-0-3		
SPE	101	Fundamentals of Effective Speaking		3-0-3	
THL ²	152	Intro. to Sacred Scripture	3-0-3		
			17	18	
<i>Sophomore Year</i>					
BIO	102	General Biology	3-3-4		
CHM ³	313-4	Organic Chemistry	3-3-4	3-3-4	
ENG	—	English elective		3-0-3	
HEC	221	Home Management I	3-0-3		
HEC	225	Child Development I	3-0-3		
EDP	112-3	Physical and Health Education	1-2-1	1-2-1	
PHL	206	Problems in Philosophy II		3-0-3	
PSY	201	General Psychology		3-0-3	
THL ²	220	Theology of Christ		3-0-3	
			15	17	
<i>Junior Year</i>					
ACC	207	Principles of Accounting	3-0-3		
BIO ⁴	205-6	Anatomy and Physiology	3-0-3	3-0-3	
CHM ⁵	400	Biochemistry		3-3-4	
HEC	303	Nutrition and Health	3-0-3		
HEC	304	Quantity Cookery		1-4-3	
HEC	308	Institutional Buying	3-0-3		
HEC	323	Demonstration Methods		0-2-1	
THL ²	—	Theology electives	2-0-2	2-0-2	
—	—	Elective	3-0-3	3-0-3	
			17	16	
<i>Senior Year</i>					
BIO	411	General Bacteriology	3-4-5		
HEC	318	Family Living		3-0-3	
HEC	401	Advanced Nutrition		3-0-3	
HEC	402	Diet in Disease		3-0-3	
HEC	406	Home Management II		1-4-3	
HEC	407	Organization and Management	3-0-3		
PSY	420	Industrial Psychology		3-0-3	
THL ²	—	Theology elective	2-0-2		
HEC ⁶	405	Methods of Teaching	3-0-3		
—	—	Electives	3-0-3		
			16	15	

¹Under "Term," 3-0-3 means 3 hrs. class, 0 hrs. laboratory, and 3 hrs. credit.

²Non-Catholic students take an elective.

³May take Chm 200 with permission.

⁴May take Bio 303 with permission.

⁵May take Chm 420 if Chm 302 or 304 is elected.

⁶May take Educ 208 with permission.

PROGRAM-S7: BACHELOR OF SCIENCE WITH A MAJOR IN
MATHEMATICS OR MATHEMATICAL STATISTICS

<i>Dept.</i>	<i>No.</i>	<i>Course</i>	<i>1st Term</i> ¹	<i>2nd Term</i>	<i>3rd Term</i>
<i>Freshman Year</i>					
CHM	123-4	General Chemistry	3-3-4	3-3-4	
CPS	247	PL/I Programming		2-0-2	
MTH	128-9	Analytic Geometry and Calculus	4-0-4	4-0-4	
MIL ²	101-2	First Year Basic Course	2-1-1	2-1-1	
PHL	—	Philosophy ³	3-0-3		
PHY	206	General Physics		3-2-4	
—	—	Electives ⁴	3-0-3	3-0-3	
			15	18	
<i>Sophomore Year</i>					
MTH	228	Analytic Geometry and Calculus	4-0-4		
MTH	229	Differential Equations		3-0-3	
MIL ²	201-2	Second Year Basic Course	2-1-1	2-1-1	
PHY	207-8	General Physics	3-2-4	3-2-4	
—	—	Humanities ³	3-0-3	6-0-6	
—	—	Electives	6-0-6	3-0-3	
			18	17	
<i>Junior Year</i>					
—	—	Mathematics Elective ⁵	3-0-3		
—	—	Mathematics Elective		3-0-3	
—	—	Mathematics Elective	3-0-3	3-0-3	
—	—	Minor	3-0-3	3-0-3	
—	—	Humanities ³	3-0-3	6-0-6	
—	—	Electives	3-0-3		
			15	15	
<i>Senior Year</i>					
—	—	Mathematics Elective	3-0-3		
—	—	Mathematics Elective		3-0-3	
—	—	Mathematics Elective	3-0-3	3-0-3	
—	—	Minor	3-0-3	3-0-3	
—	—	Humanities ³	3-0-3	6-0-6	
—	—	Electives	3-0-3		
			15	15	

¹Under "Term," 3-0-3 means 3 hrs. class, 0 hrs. laboratory, and 3 hrs. credit.

²Women take EdP 110-1-2-3; men not taking R.O.T.C. take EdP 101-2, 201-2.

³The 30 hrs. in Humanities should include 6 hrs. Theology for Catholic students and 6 hrs. Philosophy. Normally 12 hrs. should be concentrated in one area of the Humanities.

⁴The general requirement in communication skills should be satisfied as soon as possible.

⁵All students majoring in Mathematics or Statistics will elect Mth 361, 362, 421, 422 as core courses and twelve hours of other mathematics courses in consultation with the Chairman of the Department. Students minoring in Physics will elect Mth 403 when registering for Phy 303.



MEDICAL TECHNOLOGY

A twelve or thirteen month course in medical technology is offered by the Diagnostic Laboratories of St. Elizabeth Hospital, Good Samaritan Hospital, and Miami Valley Hospital. Affiliation with the University of Dayton permits a student to obtain the degree of Bachelor of Science in Medical Technology if the University's requirements are fulfilled. These schools are accredited by the Registry of Medical Technologists of the American Society of Clinical Pathologists through the Council on Medical Education and Hospitals of the American Medical Association, and qualify a student to take the examination given by the Registry of Medical Technologists.

The student receives practical and theoretical experience in the various branches of the clinical laboratory, after which he is qualified for positions in hospitals, clinics, research laboratories, and physicians' offices.

METHODS OF INSTRUCTION

After a preliminary concentrated introduction to medical technology, the student participates in the activities of the Diagnostic Laboratories, spending a specific time in each department. Instruction is under the supervision of the pathologist and his staff. Regular assignments in recognized textbooks and laboratory periodicals are given. Conferences and examinations are held throughout the year. Following a review period at the end of the prescribed course, a final examination, patterned after that of the Registry of Medical Technologists, is given.

ADMISSION REQUIREMENTS

In planning for the hospital experience, the student is required to arrange for an interview with the pathologist at the approved School of Medical Technology at the hospital. He should also plan to visit each hospital for the purpose of seeing the facilities of the diagnostic laboratories. His choice of school must be stated in writing to both the pathologist at the school of medical technology, and the advisor of the medical technology students at the University. This must be done no later than February 1, if he intends to begin training at the hospital in June. The University advisor will submit letters of recommendation to each school of medical technology in behalf of the student seeking the interview. The Registry requires 90 semester hours of academic work for admission to the clinical year in the hospital.

SENIOR YEAR SCHOLARSHIP

A full tuition scholarship is made available for the senior year. This includes room and board for the women students; it may not be possible to secure housing for male students. Students provide their own uniforms and textbooks.

LENGTH OF CLINICAL COURSE

The course of instruction covers a period of fifty-two to fifty-six consecutive weeks. If vacation period or leave of absence is granted, additional equivalent time must be made up in the school of medical technology. The hours of duty are from 8 a.m. to 5 p.m., five days a week. Special assignments for Sunday and holiday work are given with time off during the week. There is no night call for students.

Textbook assignments and extracurricular reading and study shall be done outside the regular hours. Written and oral examinations are held at regular intervals throughout the course.

GRADUATION AND REGISTRATION

After demonstrating a theoretical and practical proficiency in clinical laboratory procedures, the student is given a certificate by the hospital, and becomes eligible for the national examination for certification by the Registry of Medical Technology.

Students who are registered at the University of Dayton are eligible for the degree of Bachelor of Science in Medical Technology.

Examinations for Registration and the Certificate of M.T. (Medical Technologist) are given in July and November by the Registry of Medical Technologists in various cities. These are written examinations.



PROGRAM—S8: BACHELOR OF SCIENCE WITH A MAJOR IN
MEDICAL TECHNOLOGY

<i>Dept.</i>	<i>No.</i>	<i>Course</i>	<i>1st Term</i> ¹	<i>2nd Term</i>	<i>3rd Term</i>
<i>Freshman Year</i>					
BIO	101	General Biology		3-3-4	
CHM	123-4	General Chemistry	3-3-4	3-3-4	
ENG	101-6	Freshman English	3-0-3	3-0-3	
MIL ²	101-2	1st Year Basic	2-1-1	2-1-1	
MTH ³	112	Intro. Math. Analysis	3-0-3		
— ⁴	—	Study of Man elective	3-0-3	3-0-3	
— ⁵	—	Humanities elective	3-0-3	3-0-3	
			17	18	
<i>Sophomore Year</i>					
BIO	102	General Biology	3-3-4		
BIO	340	Cellular Biology		3-0-3	
CHM	313-4	Organic Chemistry	3-3-4	3-3-4	
CHM	201	Quantitative Analysis	2-4-4		
ENG	—	Sophomore English	3-0-3		
— ⁶	—	Study of Man elective		3-0-3	
BIO	209	Comparative Anatomy		2-4-4	
MIL ⁷	201-2	2nd Year Basic	2-1-1	2-1-1	
			16	15	
<i>Junior Year</i>					
BIO	312	General Genetics	3-0-3		
BIO	411	Bacteriology	3-4-5		
— ⁸	—	Humanities Elective	3-0-3	3-0-3	
—	—	Modern Language	3-0-3	3-0-3	
— ⁹	—	Study of Man elective		3-0-3	
BIO	325	Parasitology	2-3-3		
— ¹⁰	—	Science elective		6-8-8	
			17	17	
<i>Senior Year</i> ¹¹					
MET	481	Introduction to Medical Technology	—4		
MET	482	Urinalysis and Renal Function		—4	
MET	483	Hematology	—6		
MET	484	Bacteriology, Parasitology, Mycology		—7	
MET	485	Chemistry and Gastric Analysis		—8	
MET	486	Histology and Cytology	—3		
MET	487	Serology and Spinal Fluids	—3		
MET	488	Blood Banking	—3		
MET	489	Laboratory Management		—0	
MET	490	Normal and Pathologic Physiology	—0		
			19	19	

¹Under "Term," 3-0-3 means 3 hrs. class, 0 hrs. laboratory, and 3 hrs. credit.²Women take EdP 130-1; men not taking R.O.T.C. take EdP 101-2.³May substitute depending on background and score on placement test.⁴Phl 106 or Thl 110, 152, 153 or 154.⁵Spe 101 and Psy, Soc, Eco, Hst. etc.⁶Phl 206 or Thl 220.⁷Women take EdP 112-3; men not taking R.O.T.C. take EdP 201-2.⁸Thl electives 6 cr. hrs., non-Catholics take humanities electives.⁹Spe 101.¹⁰Other Bio, Chm, Mth. etc. as needed.¹¹Of the 38 credits in the senior year, 24 must be completed before graduation. The remaining 14 are necessary to complete the program of the Hospital School of Medical Technology.

PROGRAM—S9: BACHELOR OF SCIENCE WITH A MAJOR IN PHYSICS

<i>Dept.</i>	<i>No.</i>	<i>Course</i>	<i>1st Term</i> ¹	<i>2nd Term</i>	<i>3rd Term</i>
<i>Freshman Year</i>					
CHM	123-4	General Chemistry	3-3-4	3-3-4	
ENG	101-2	Freshman English	3-0-3	3-0-3	
MIL ²	101-2	First Year Basic Course	2-1-1	2-1-1	
MTH	128-9	Analytic Geometry and Calculus	4-0-4	4-0-4	
PHY	196	General Physics		3-1½-3	
PHY	196L	General Physics Lab I		0-3-1	
THL ³	152	Intro. to Sacred Scripture	3-0-3		
			15	16	
<i>Sophomore Year</i>					
—	—	Modern Language	3-0-3	3-0-3	
MIL ⁴	201-2	Second Year Basic Course	2-1-1	2-1-1	
MTH	228	Analytic Geometry & Calculus III	4-0-4		
MTH	229	Differential Equations		3-0-3	
PHL	106	Problems in Philosophy I	3-0-3		
PHL	206	Problems in Philosophy II		3-0-3	
PHY	207-8	General Physics II & III	3-1½-3	3-0-3	
PHY	207L-8L	General Physics Lab II & III	0-3-1	0-3-1	
CPS	233	Fortran Programming		2-0-2	
THL ⁵	220	Theology of Christ	3-0-3		
			18	16	
<i>Junior Year</i>					
PHY	301	Thermodynamics	3-0-3		
PHY	303	Intermediate Mechanics I	3-0-3		
PHY	390	Intro. to Quantum Mechanics		3-0-3	
PHY	430-1	Advanced Lab I & II	0-4-2	0-4-2	
PHY	460	Seminar	2-0-1	2-0-1	
SPE	101	Fundamentals of Effective Speaking		3-0-3	
THL ⁵	—	Theology elective	2-0-2	2-0-2	
—	—	Minor ⁶	3-0-3	3-0-3	
			14	14	
<i>Senior Year</i>					
PHY	421	Nuclear Physics	3-0-3		
PHY	408	Intermediate Electricity & Magnetism I	3-0-3		
PHY	432-3	Advanced Lab III & IV	0-4-2	0-4-2	
PHY	460	Seminar	2-0-1	2-0-1	
THL ⁷	—	Theology elective	2-0-2		
—	—	Open elective ⁸	3-0-3	9-0-9	
—	—	Minor	3-0-3	3-0-3	
			17	15	

¹Under "Term," 3-0-3 means 3 hrs. class, 0 hrs. Lab or recitation and 3 hrs. credit.²Women take EdP 110-1; men not taking R.O.T.C. take EdP 101-2.³Non-Catholic students take an elective.⁴Women take EdP 112-3; men not taking R.O.T.C. take EdP 201-2.⁵Non-Catholic students take an elective.⁶Upper level courses in physics, math, or other *approved* subjects (see p. 239).⁷Non-Catholic students take an elective.⁸See p. 239.

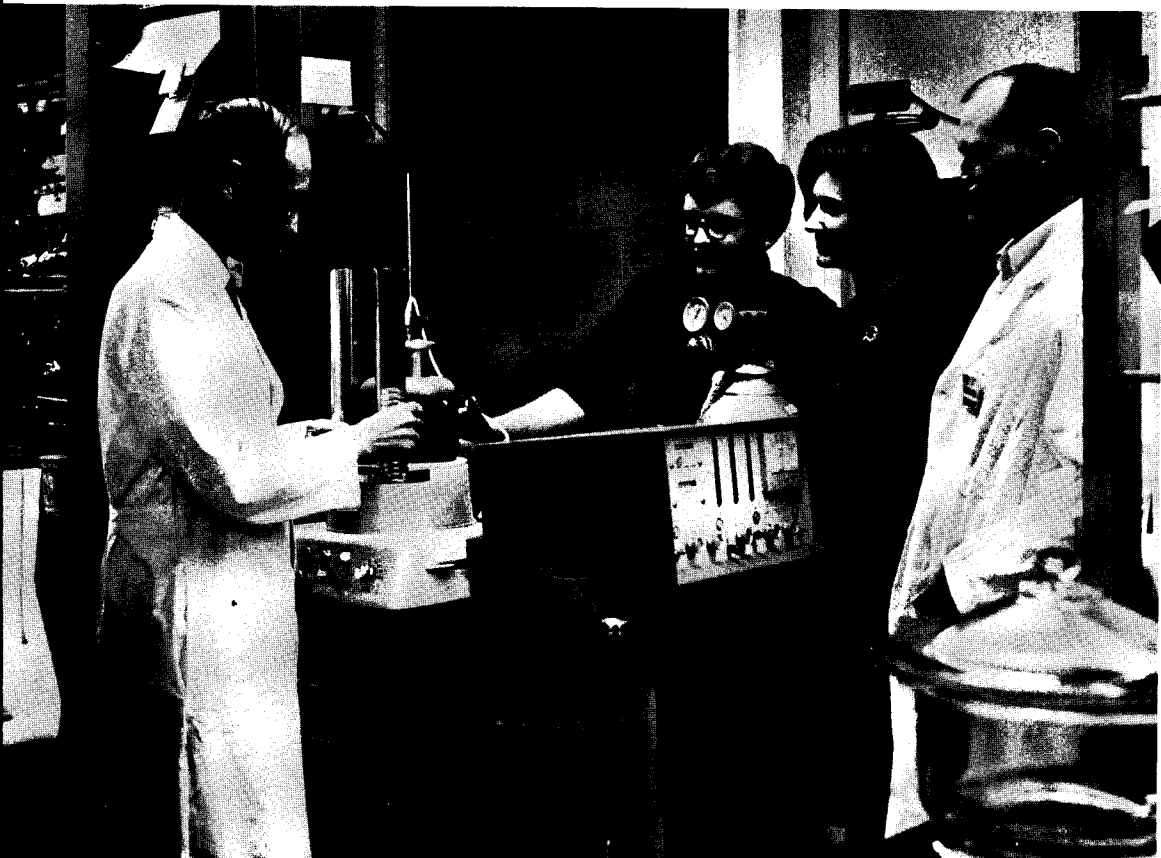
PREMEDICAL AND PREDEDENTAL

This program meets the admission requirements of all approved medical schools as determined by the Council of Medical Education for the American Medical Association. The four year course leading to the degree, Bachelor of Science, is recommended whenever possible. In addition to the basic sciences, it should include an adequate study of the humanities, social science and foreign language. Students contemplating a career in medicine should realize that preference is given to candidates who have the most complete education, as well as good scholastic standing.

Recommendation of a student by his premedical school is of considerable importance for admission to medical or dental school. Recommendation is based on more than academic standing. Character, professional development, and personality qualities are also weighed. The membership of the board on premedical recommendations is as follows: Dr. Carl I. Michaelis, *Chairman*, Dr. Cletus C. Chudd, S.M., Dr. Peter J. Faso, Mariano Crivello, Russell A. Joly, S.M., Dr. George B. Noland, and Gertrude D. Shay.

Both the Medical College Admissions Test and the American Dental Aptitude Test are administered on this campus each year in the fall and spring semesters. Students are required by the graduate school to take this test, usually in the spring of their junior year. Applications for registration may be secured from the premedical advisor.

The increasingly high admission standard for medical and dental schools makes it desirable that the student in the premedical program give full time to study, and that he consider part time work to gain some financial advantage only as a last resort. Most medical schools do not admit college graduates with less than a 3.00 cumulative average. For this reason, students whose cumulative average after 2 years is not at least 2.7 should decide on a different major. He should consult the premedical advisor.



PROGRAM—S10: BACHELOR OF SCIENCE FOR PREMEDICAL AND
PREDENTAL STUDENTS

<i>Dept.</i>	<i>No.</i>	<i>Course</i>	<i>1st Term¹</i>	<i>2nd Term</i>	<i>3rd Term</i>
<i>Freshman Year</i>					
BIO	101	General Biology		3-3-4	
CHM	123-4	General Chemistry	3-3-4	3-3-4	
ENG	101-6	English	3-0-3	3-0-3	
MIL ²	101-2	1st Year Basic	2-1-1	2-1-1	
MTH ³	112-3	Int. Math. Anal.	3-0-3	3-0-3	
— ⁴	—	Study of Man	3-0-3	3-0-3	
			14	18	
<i>Sophomore Year</i>					
BIO	102	General Biology	3-3-4		
BIO	340	Cellular Biology		3-0-3	
ENG	—	English elective	3-0-3		
MIL ⁵	201-2	2nd Year Basic	2-1-1	2-1-1	
— ⁶	—	Study of Man elective		6-0-6	
CHM	313-4	Organic Chemistry	3-3-4	3-3-4	
GER	—	German	3-0-3	3-0-3	
			15	17	
<i>Junior Year</i>					
BIO	312	General Genetics	3-0-3		
—	—	Science elective		3-4-4	
PHY	201-2	General Physics	3-2-4	3-2-4	
— ⁷	—	Study of Man elective	6-0-6	3-0-3	
— ⁸	—	Humanities elective	3-0-3	3-0-3	
CHM	201	Quantitative Analysis		2-4-4	
			16	18	
<i>Senior Year</i>					
THL ¹¹	—	Theology electives	4-0-4	2-0-2	
— ⁹	—	Science electives	3-3-4	3-4-4	
— ¹⁰	—	General elective	3-0-3	6-0-6	
—	—	Humanities electives	6-0-6	3-0-3	
			17	15	

¹Under "Term," 3-0-3 means 3 hrs. class, 0 hrs. laboratory, and 3 hrs. credit.²Women take EdP 130-1; men not taking R.O.T.C. take EdP 101-2.³May substitute depending on background and score on placement test.⁴Phl 106 or Thl 110, 152, 153 or 154.⁵Women take EdP 112-3; men not taking R.O.T.C. take EdP 201-2.⁶Thl 220, Phl 206, Psy, Soc, Pol, Eco, etc.⁷Eco, Hst, Psy, Soc, Pol, Phl, Thl, etc.⁸Eng, Hst, Pol, etc.⁹Bio, Chm, Phy, Mth as needed to meet specific admission requirements for professional school.¹⁰Must include Spe 101 if not taken earlier.¹¹Non-Catholics may take electives in place of theology.

