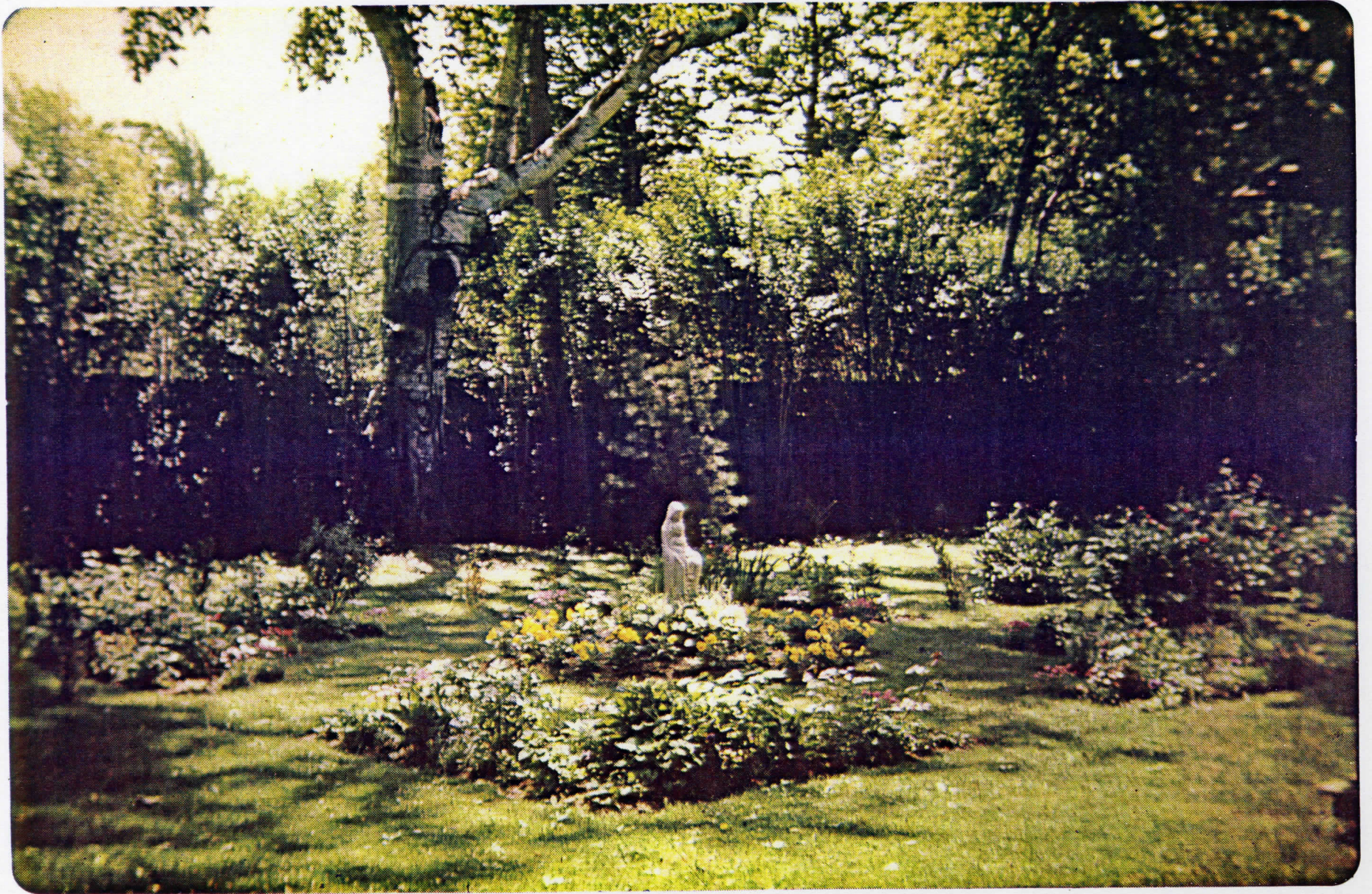


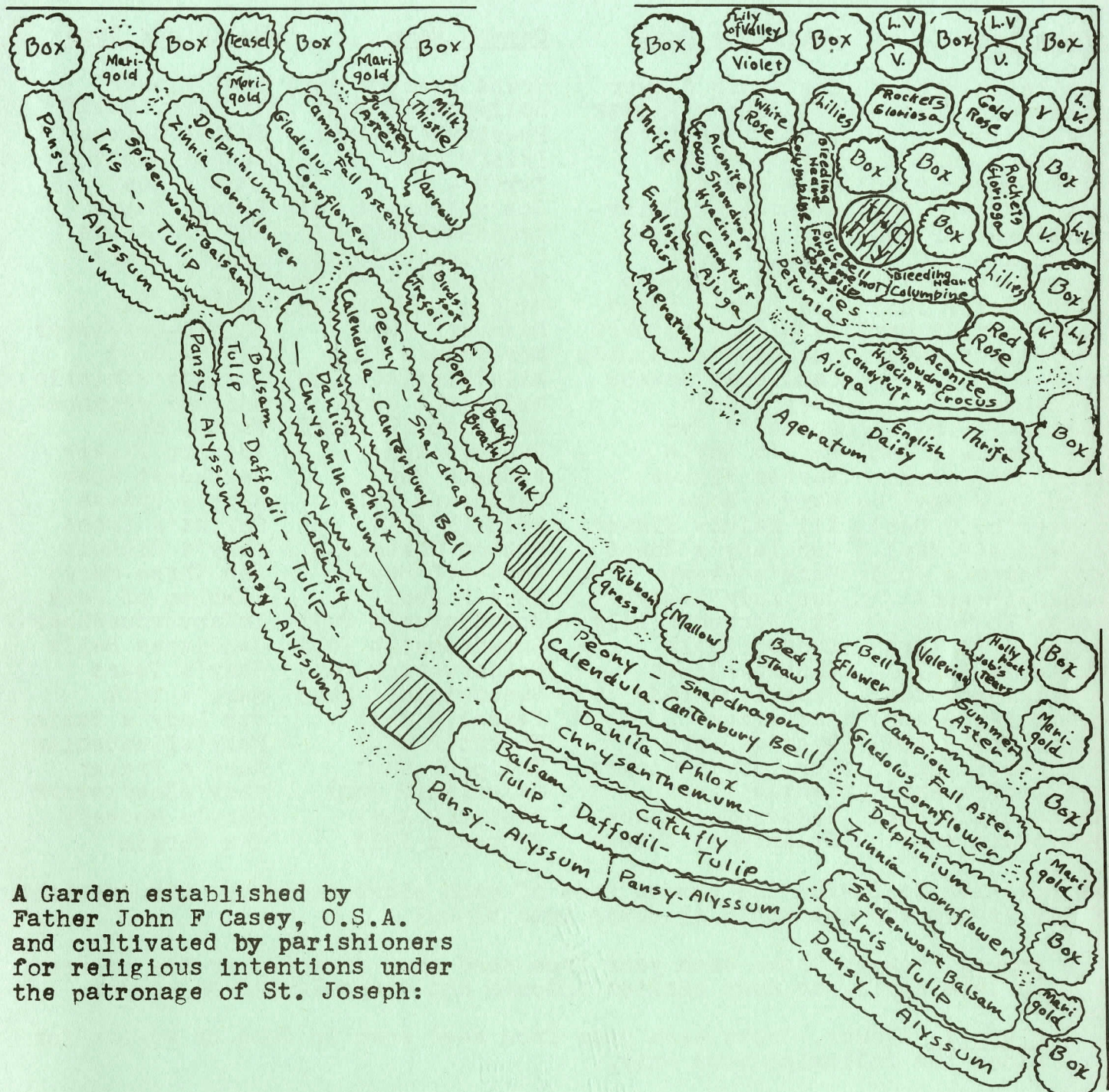
Stokes Mary Garden
Philadelphia
May, 1963



Stoker Mary Gardel
Philadelphia
May, 1965



MARY GARDEN
Our Mother of Consolation School
19 E. Chestnut Hill Ave., Phila., Pa. 19118



A Garden established by
Father John F Casey, O.S.A.
and cultivated by parishioners
for religious intentions under
the patronage of St. Joseph:

Memorial to the work of Mother Aloysia Maria, S.S.J.
All for the honor and glory of God
Rebirth of Christian love in the world
Your personal intentions, placed in Mary's hands

Greater oneness with our brethren apart
Affectionate prayers for our priests and sisters, past and present
Remembrance of the souls of all departed parishioners
Divine destiny fulfilled in our children's lives
Enrichment of parish life through love of Mary and of nature
National re-appraisal of divine and human law

OUR MOTHER OF CONSOLATION PARISH MARY GARDEN

A list of the flowers in the garden together with their religious names and symbolism from old religious traditions, based on shape, color or liturgical season of bloom. Background information available in the Parish Library.

<u>Common Name</u>	<u>Religious Name</u>	<u>Common Name</u>	<u>Religious Name</u>
Aconite(Bb Feb)	Christmas Flower	Grane Hyac(Bb Apr)	Lent Flower
Ageratum(A Jun)	St. John's Flower	Hollyhock(B Jul)	St. Jos. Staff
Ajuga(P Jun)	St.Lawr.Gridiron	Hyacinth(Bb Apr)	Easter Spikes
Alyssum(A Jul)	Mary's Flower	Iris(P May)	Mary's Sword
Aster,Summer(P Jul)	Mary's Star	Ivy(P -)	Adam's Leaf
Aster, Fall(P Sep)	Michaelmas Daisy	Job's Tears(A Jul)	Rosary Tears
BabysBreath(P Jul)	Our lady's Veil	Lady'sMantle(P May)	Mary's Mantle
Balsam(A Jul)	Jesus' Tears	Lily-Valley(P May)	Mary's Tears
Bedstraw(P Jul)	Mary's Bedstraw	MadonnaLily(Bb Jun)	Mary Lily
Bellflower(P Jun)	Our Lady's Bells	Maiden Pink(P May)	Mary's Pins
BleedgHeart(P May)	JesusTear,M.Heart	Mallow(P Jun)	St.SimeonsFlower
Bluebells(P Jun)	Our lady's Thimble	Marigold(A Jul)	Mary's Gold
Box(P -)	Candlemas Greens	MilkThistle(B Jun)	OurLady'sThistle
Calendula(A Jul)	Mary's Gold	Mullein(B Jun)	OurLord'sFlannel
Campion(P Jun)	Christ's Eye	Narcissus(Bb Apr)	Easter Star
Cant. Bells(B Jun)	Mary's Bells	Pansy(B Apr)	Trinity Flower
Candytuft(P Apr)	Easter Flower	Peony(P May)	Pentacost Rose
Catchfly(P May)	Mary's Rose	Petunia(A Jul)	Mary's Praise
Chrysanth.(P Oct)	All Saints Flower	Phlox(P Jul)	Christ's Cross
Columbine(P May)	Our Lady's Shoes	Ribbon Grass(P -)	Mary's Ribbons
Cornflower(A Jul)	Mary's Crown	Rocket(B May)	The Three Marys
Cowslip(P Apr)	Our Lady's Keys	Rose(P Jun)	(Emblem of Mary)
Crocus(Bb Mar)	St. Joseph's Lily	Snapdragon(A Jul)	InfantJesusShoes
Daffodil(Bb Apr)	Easter Bells	Snowdrops(Bb Feb)	Candlemas Bells
Dahlia(Te Jul)	Church Flower	Spiderwort(P May)	Mary's Tears
Delphinium(P Jun)	Beautiful Lady	SweetWillm(B May)	Mary's Tuft
Engl.Daisy(B Apr)	Mary-Love	Teasel(B Jul)	Our Lady's Basin
Forget-Not(B Apr)	Eyes of Mary	Thrift(P May)	Mary'sPincushion
Foxglove(B Jun)	Our Lady's Gloves	Tulip(Bb May)	Mary's Prayer
Geranium(Te May)	Gentle Virgin	Valerian(P Jun)	Mary'sNeedlework
Gladiolus(Te Aug)	Ladder-to-Heaven	Violet(P Apr)	Mary's Modesty
Gloriosa(A Aug)	St.Anthony's Rose	Zinnea(A Jul)	The Virgin

The notation following the common name of each plant indicates the duration of its growth and the month it comes into bloom:

- A - Annual Flower. Grown each year from seed sown directly in the garden in late April, or sown earlier indoors and transplanted to garden.
- B - Biennial Flower. Grown each year from seed sown in June or August for bloom the following year only.
- P - Perennial Flower. Planted as mature plants in spring or fall, after growth from seed, root divisions or rooted cuttings in nursery beds away from garden. Bloom for a number of years.
- Bb - Bulbs or Roots (Perennial). Planted in fall. Bloom for many years.
- Te - Tender Perennials. Will not stand frost. Planted in May. Dug in October for cool indoor storage and replanted the following May.

Most biennial and perennial flowers bloom for about one month. Bluebells, Campion, Dahlias, English Daisies, Geraniums, Pansies, Roses and most annual flowers bloom for two or three months. Planting plan will be revised slightly from time to time to improve balance of plant height and color.

March 3, 1966

Mrs. Florence S. Baker
8 Valley View Lane
Newtown Square, Pa. 19073

Dear Mrs. Baker,

Here is the background information on the Parish Garden in Chestnut Hill, including photo captions, and the 10 color slide photos. Please make as little or as much of the copy yours as you wish.

The photo credit should go to "Mary's Gardens" for whom I am able to authorize their use. We would like the photos returned, and we consider them a loan without charge. We have not initiated or been approached for any other local (or national) publicity this year on the garden, but if the Inquirer would want to compensate us to protect exclusive right to reproduce the photos we would agree to this, provided we received the originals back for our lecture use and records.

We are also able to extend the authorization of Father Casey to publicize the garden by word and photographs ("as long as you mention my name"), as far as the parish and school are concerned. This can be confirmed at Our Mother of Consolation Church Rectory (CH 7-0430).

We realize the use and extent of use of the story and photos are subject to editorial discretion, but if some copy and photos are used in a self-contained feature of at least a page spread, then we would hope to obtain 1000 copies for use nationally in encouraging other schools to start such gardens. If just a photo or two are finally used to illustrate a more general article, then our interest would be in 100.

Mr. McTague and I very much appreciate your interest in the garden and will be pleased to provide any additional information or photos you may be able to use. We hope you will be able to visit the garden personally this May and will be happy to meet with you there.

Sincerely yours,

PARISH GARDEN IN CHESTNUT HILL

Each morning the 400 pupils of Our Mother of Consolation Parish School in Chestnut Hill look for new growth and flowers in their "Mary Garden" in front of the school. So, too, do their Pastor, Father John F. Casey, O.S.A.; their teachers, the Sisters of St. Joseph, who look out on the garden from their convent; and passers-by on Chestnut Hill Avenue.

The Mary Garden was established at Father Casey's suggestion in April of 1965 in memory of Mother Aloysia Marie, S.S.J., Principal of the school for many years, who died the previous fall. It was dug and planted by William Morgan, school custodian, with the help of the pupils, around a figure of the Virgin and Child, according to a plan designed by parishioner, John S. Stokes Jr., horticulturalist and authority on medieval plant symbolism. It is cared for as a religious work in the spirit of old monastery gardens. Last fall bulbs were planted, giving early blooms this spring.

In the tradition of medieval Mary Gardens, the parish garden consists entirely of plants - some sixty annual, biennial and perennial species in all - which bore religious names and symbolism in old popular religious traditions of European monasteries and countrysides. Plant markers give the present-day names, old religious names and Latin botanical names of the plants. The ceramic figure of the Virgin and Child is a replica of an original from the school of Andrea della Robbia.

The cycle of blooms begins in March with snowdrops and crocuses, named of old Candlemas Bells and St. Joseph's Lily from the feasts of the church year for which they are in bloom in many places. In April come grape hyacinth (Lent Flower), daffodil (Easter Bells), hyacinth

(Easter Spikes) and candytuft (Easter Flower). Also cowslip (Our Lady's Keys), forget-me-nots (Eyes of Mary), violets (Mary's Modesty) and pansies (Trinity Flower): all named in medieval Europe from the symbolism suggested by their forms and colors.

The flowers of May, month of the Virgin, include sea pink (Mary's Pincushion), lily-of-the-valley (Mary's Tears), dew cup (Our Lady's Mantle), bleeding heart (Heart of Jesus) and peony (Mary's Rose).

And thus the flowers continue throughout the summer, including Madonna lilies in June, Our Lady's Bedstraw in July, Gladiolas (Ladder-to-Heaven) in August, Michaelmas Daisy in September, chrysanthemum (All Saints Flower) in October, and many summer annual flowers such as marigold (Marygold) and cornflower (Mary's Crown) grown from seeds sown in April.

All associated with the garden the first year were impressed by the intuitive comprehension of the flower symbols by the children, evidenced by remarks such as: "I know why the bleeding heart is called Heart of Jesus: because the little drop at the bottom is red and white, making you think of the blood and water which both came from Jesus' side."

The many flowers named for the Virgin Mary recall that in medieval times, before the days of printing and catechisms, the truths of Christ were widely taught and meditated upon in terms of his relationship to Mary, as they still are today in the praying of the Rosary.

The school children are given garden and classroom instructions in the fundamentals of gardening, and also in the origin of religious plant symbolism in scripture, liturgy and popular legend. Observation and care of the garden are incorporated in the school nature and science programs. Last year many students started small Mary Gardens of their

own in their yards or window boxes.

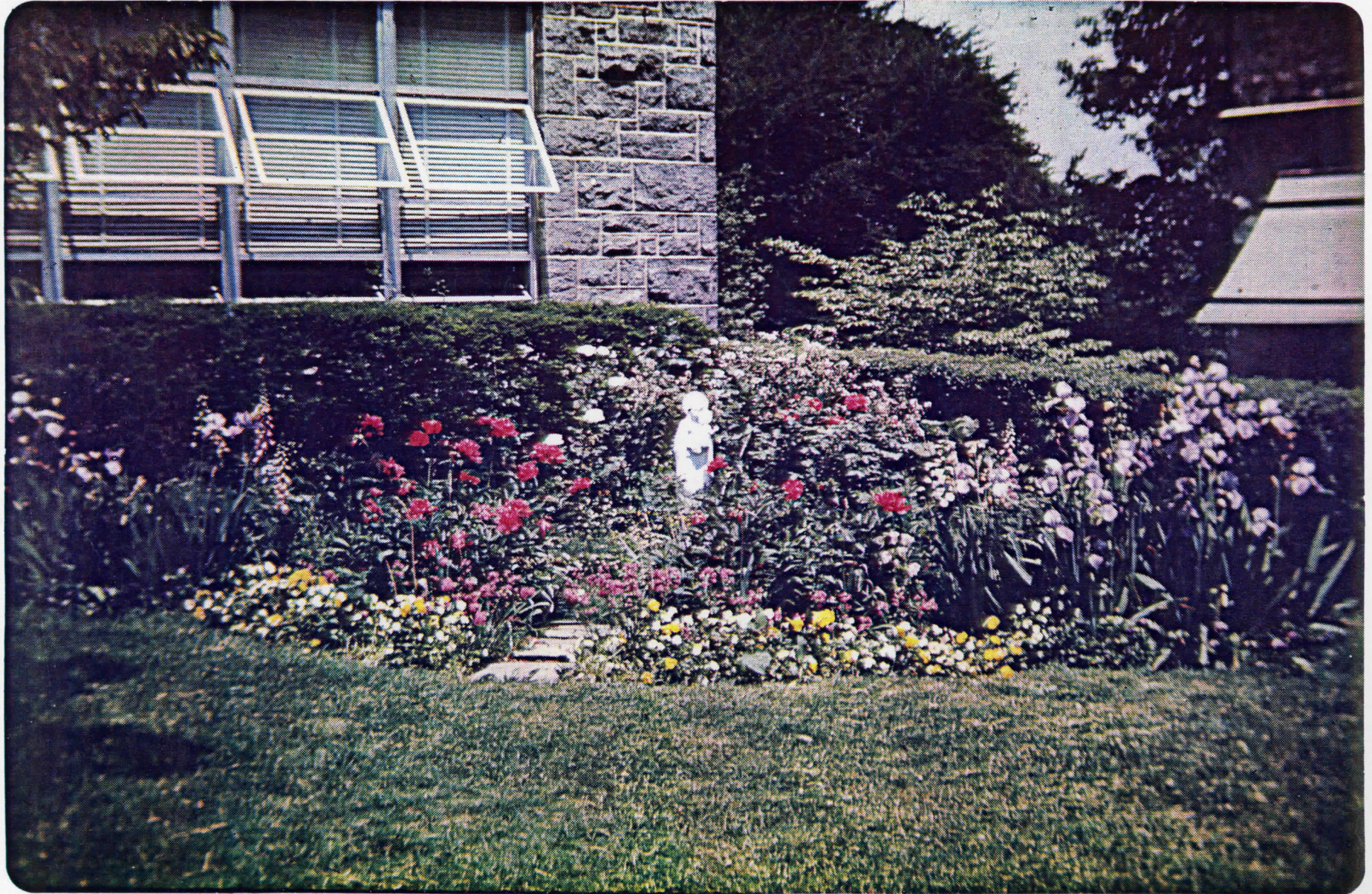
Complimentary copies of the Mary Garden planting plan and complete list of plants, with their religious and common names and notes on their growth and care, are available by mail from: Our Mother of Consolation School, 19 E. Chestnut Hill Ave., Phila., Pa. 19118. The public is welcomed to visit the garden at all times.

PHOTO CAPTIONS

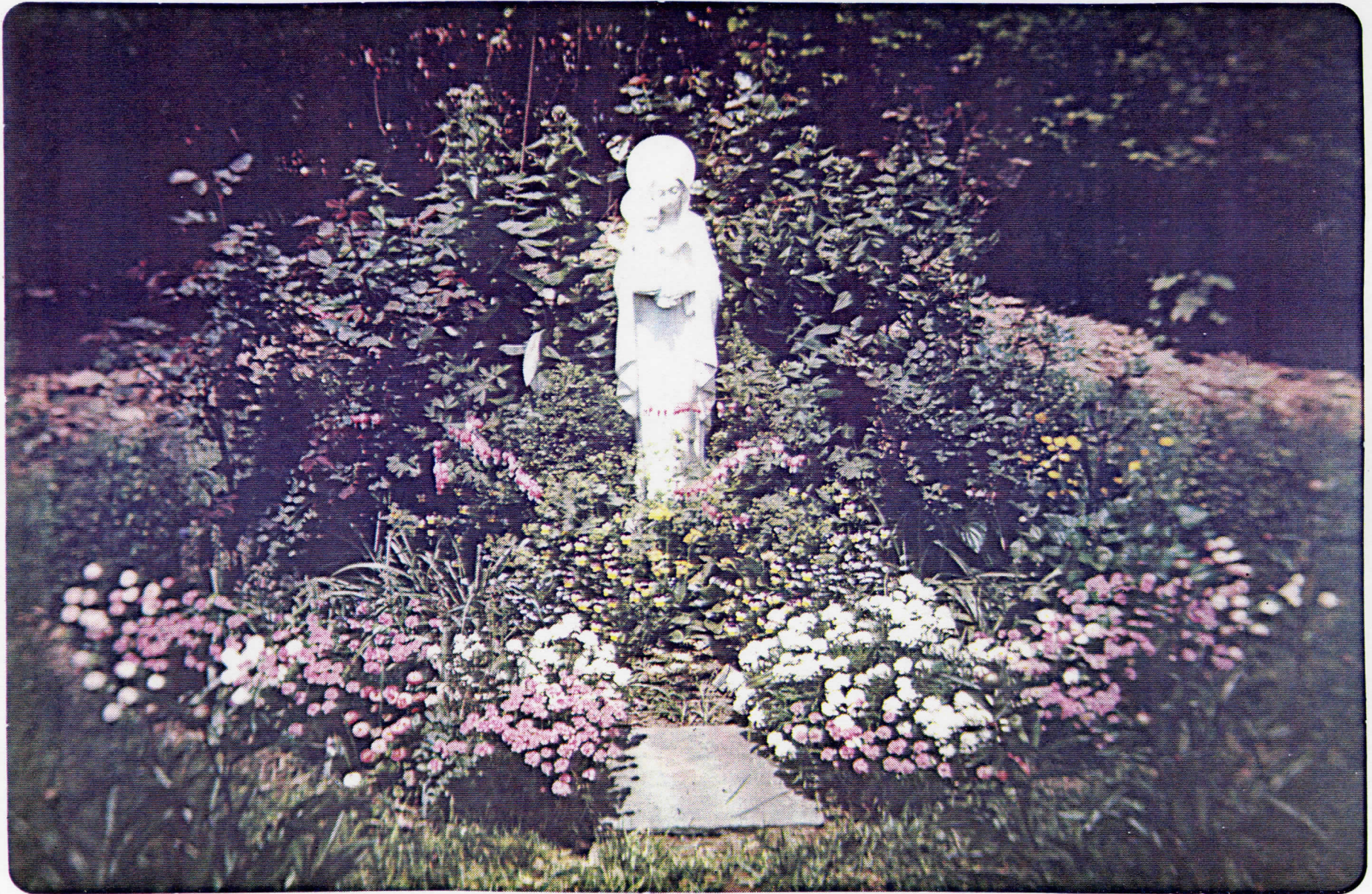
1. Our Mother of Consolation Parish School, Chestnut Hill, Philadelphia.
2. School Mary Garden in May splendor.
3. School children help in digging garden.
4. Father Casey and Doodlebug inspect digging.
5. Children make border planting of boxwood (Candlemas Greens).
6. School assembled for blessing of garden.
7. Sowing seeds in April for summer annual flowers.
8. Girl poses for photograph in garden after receiving her First Communion while boys discuss flower symbols.
9. Walkway to Madonna and Child statue.
10. Garden statue in June with red caladium (Heart of Jesus).

Photo credits: Mary's Gardens.

OMC Parish Mary Garden
Philadelphia
May, 1967



Our Parish Mary Garden
Philadelphia
May, 1967



OMC Parish Mary Garden
Philadelphia
May, 1967

